

CT-820C

WLAN VoIP Gateway



Description

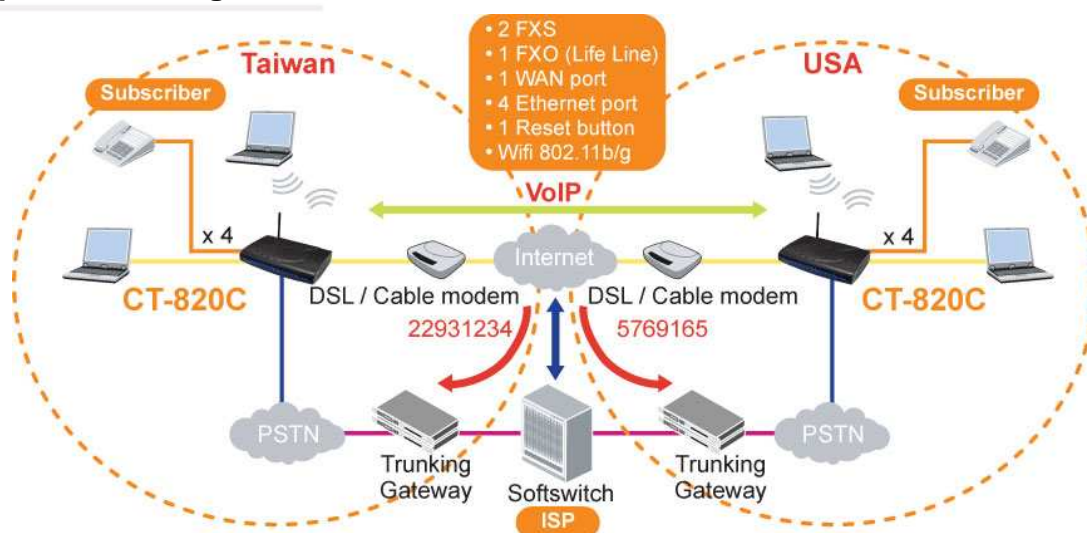
Comtrend's CT-820C is a powerful WLAN VoIP Gateway, providing predictable, real-time, toll-quality voice over the Internet. The CT-820C is designed for residential and business users with broadband DSL/Cable access who need to integrate WiFi AP and VoIP technologies. The CT-820C offers users easy access to the Internet via WLAN or Ethernet, and provides VoIP via standard analog phones.

The CT-820C allows calls to be routed to anywhere in the world – significantly reducing or eliminating long distance charges. You can even make phone calls when your PC is turned off. The CT-820C supports QoS on layer 3, which provides high quality voice service, and supports powerful TOS/DSCP bit tagging on SIP/RTP packets for end-to-end QoS mechanism, through the whole network. It also provides a solution for all your network and telephony needs in one integrated unit, which reduces space requirements, and the cost of hardware and cabling. This makes CT-820C the most cost effective solution for your application.

Features

- VoIP and Router Integrated
- Integrated 802.11g AP (backward compatible with 802.11b)
- Supports life line: PSTN alive when power off
- Supports Quality of Service (QoS) for voice
- Supports caller ID presentation and restriction
- Supports call hold
- Supports call waiting
- Supports call forwarding
- Supports call transfer
- Supports 3-way conference
- DNS SRV
- Dial plan
- Supports VPN Pass-Through
- Supports Day-time parental control
- Remote administration and automatic firmware upgrade and configuration
- Centralized configuration and firmware upgrade via APS (Automatic Provision Sever, optional)

Applications Diagram



CT-820C

WLAN VoIP Gateway

Specifications

WAN Interface

Ethernet x 1

LAN Interface

Ethernet x 4

WLAN

Standard IEEE802.11g, backward compatible with 802.11b
Encryption 64, 128-bit Wired Equivalent Privacy (WEP) Data Encryption
Channels 11 Channels (US, Canada)/ 13 Channels (Europe)/ 14 Channels (Japan)
Data Rate Up to 54Mbps
MAC Address Filtering, WEP, WPA, IEEE 802.1X
10, 25, 50, 100mW @ 22MHz channel bandwidth Output power level can be selected according to the environment

Analog Interface

FXS x 2
FXO x 1 (Life Line)

WAN Connection

PPPoE(RFC 2516) Yes
DHCP Client Yes
Static IP Yes

Management

SNMP, SNMP, Telnet, Web-based management, Configuration backup and restoration
Firmware upgrade via HTTP, TFTP client and server, or FTP server
Centralized configuration and firmware upgrade via APS (optional)

Routing Functions

Static route, RIP v1,v2, NAT/PAT, DMZ, DHCP Client/Server/Relay, DNS Proxy, DDNS, IGMP proxy

Security Functions

Authentication protocols PAP, CHAP
VPN PPTP/L2TP/IpSec pass-through
Stateful Packet Inspection, Packet filtering, Denial Of Service protection, Traffic Conditioning
Management, HTTP proxy

Voice Functions

SIP RFC 3261
Codec G.711a, G.711u, G.729, ILBC
RTP RFC 1889
SDP RFC 2327
Caller ID ETSI based
Life line Yes
Echo cancellation G.168
Silence suppression Yes
T.38/Fax pass through Yes
DTMF RFC2833/in-band
QoS Yes
ToS/DSCP bit tagging Yes
Dial Plan Yes

Power

External power adapter 100-240Vac to 12Vdc /1.5A

Environmental Conditions

Operating temperature 0 ~ 50 degrees Celsius
Relative humidity 5 ~ 90% (non-condensing)

Dimensions

205 mm (W) x 47 mm (H) x 145 mm (D)

Note: Specifications are subject to change without notice.

Taiwan:
3F-1, No.10, Lane 609, Chung Hsin Road Section 5, San
Chung, Taipei, Taiwan 24159
Tel: 886-2-2999-8261
Fax: 886-2-2999-8497

China:
NO.88 East QianJin Road,Kunshan City,JiangSu,China
Tel: 86-512-57383156, 86-512-57383157,
86-512-57384515
Fax: 86-512-57383155

Spain:
Edif. América II C/Prócion,7 portal 3 bajo H 28023 Madrid,
Spain
Tel: 34-917990403
Fax: 34-913510999

UK:
566 Chiswick High Road Building 3, Chiswick Park Chiswick -
London, W4 5YA UK
Tel: 44-0-8453701031
Fax: 44-0-8453701032

France:
8, Rue Edouard Naud
92130 Issy-Les-Moulineaux, France
Tel: 33-1-78463600
Fax: 33-1-78463601

Czech Republic:
TOKOVO Jankovcova 1518/2, 170 00, Prague 7, Czech
Republic
Tel: 420-266-782040
Fax: 420-266-782990

USA & Canada:
16 Goodyear, Suite 120, Irvine, CA 92618
Tel: 1-949-7539640
Fax: 1-949-7539020

Brazil:
Al. Campinas, 977 - 7º. Floor - Room 71 / 72 - Jardins
Zip Code: 01404-001 - São Paulo - SP - Brazil
Tel: 00 55 11 3052-2295
Fax: 00 55 11 3052-2295

Mexico:
Mariano Escobedo 396 Office 503 Colonia Anzures, Deleg.
Miguel
Hidalgo 11590 Distrito Federal México
Tel: +52 (55) 4623-1516



COMTREND CORPORATION

Global contact: sales@comtrend.com

Website: www.comtrend.com

