



AC 750

Next Generation Wi-Fi



Dual-Band



Smart Setup,
No CD Required

EW-7208APC

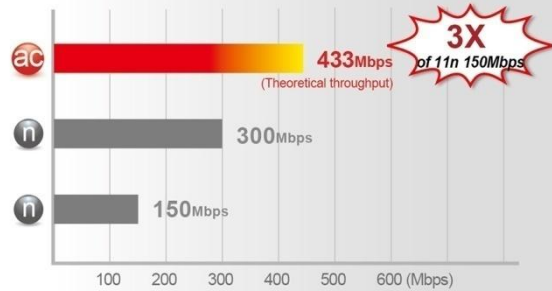
AC750 Multi-Function Dual-Band Access Point / Range Extender

Smartphones, tablets and laptop computers are everywhere, and they all rely on one thing - fast Wi-Fi. TVs, games consoles, security cameras, lighting and an ever-growing range of household appliances are all becoming network-connected devices and high-performance, reliable Wi-Fi is essential in modern homes for the things people use every day. The Edimax EW-7208APC dual-band 802.11ac access point meets the connectivity needs of homes and small businesses alike. Featuring the latest, high-speed 11ac standard for noticeable improvements in Wi-Fi speed and performance, triple antennas for expansive coverage, easy setup and advanced features such as VLAN support, and multiple SSIDs, the EW-7208APC is an all-in-one solution to equip your home network for today and tomorrow's Wi-Fi demands.

11ac Wireless Networking

The Edimax EW-7208APC supports IEEE 802.11ac wireless standard, meaning higher data rates in the 5GHz band. With 300Mbps speeds in the 2.4GHz band and 433Mbps speeds in 5GHz, the EW-7208APC is ideal for HD video streaming and large file transfers. The access point is also backward compatible with 802.11a/b/g/n to ensure compatibility with legacy Wi-Fi devices.

Maximum Speed: Next Generation 802.11ac vs. 802.11n



Concurrent Dual-Band Wi-Fi Connectivity

The Edimax EW-7208APC access point provides simultaneous 2.4GHz (802.11n) and 5GHz (802.11ac) wireless network connectivity for maximum flexibility for your network devices.

5GHz (Up to 433Mbps)
Interference-Free
HD Video and Gaming

Online Gaming

HD Video Streaming

VoIP Calling

2.4GHz (Up to 300Mbps)
More Supported Devices
Basic Internet Applications

Web Browsing

Online Chat

Email and downloading

Concurrent Dual-Band

AC750: 433Mbps(5GHz) + 300Mbps(2.4GHz)

ac

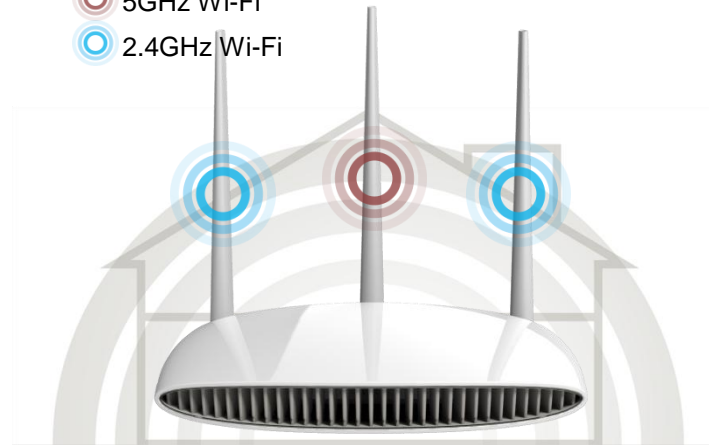
n a

n g b

AC750 Multi-Function Dual-Band Access Point / Range Extender

EW-7208APC

5GHz Wi-Fi
2.4GHz Wi-Fi



Three Antennas For Better Wi-Fi Performance

Employing three external detachable antennas, the EW-7208APC provides powerful 2.4GHz and 5GHz dual-band signal strength and enhances Wi-Fi range, providing signal penetration through walls and floors across your home or office.

5-in-1, Access Point, Range Extender, Wireless Bridge, Wi-Fi Router and WISP

The EW-7208APC can work as an access point, range extender, wireless bridge, Wi-Fi router or WISP. Just configure the mode you need for your network environment using the smart iQ Setup wizard.

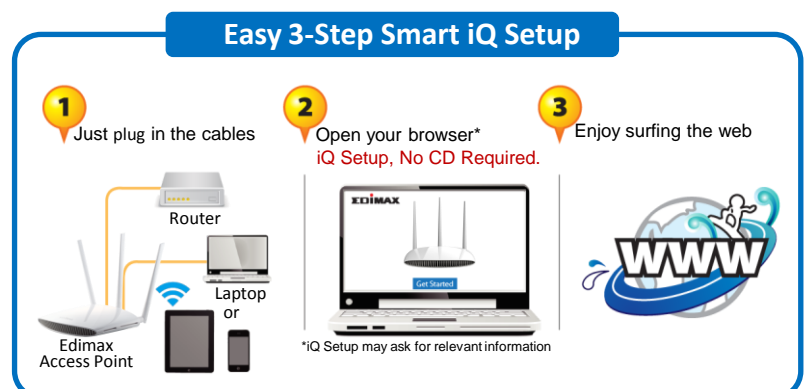


Switch mode using the smart iQ setup wizard on any device with a web browser, no CD required.

**Mobile device setup requires iOS 4.0 or Android 4.0 and above.*

Smart iQ Setup

Features iQ Setup for smart, automatic and quick installation with no CD required.



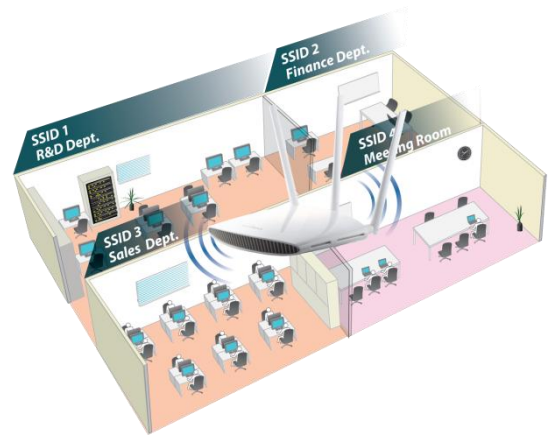
AC750 Multi-Function Dual-Band Access Point / Range Extender

EW-7208APC

Multi-SSID & VLAN Support*

Multi-SSID enables users to configure up to eight separate SSIDs (2.4GHz x 4 and 5GHz x 4) in order to group and manage users according to your requirements. In addition, each SSID can be assigned a different VLAN ID, so users with multiple VLANs can manage the network access level of each SSID – ensuring security and protecting confidential or critical network resources.

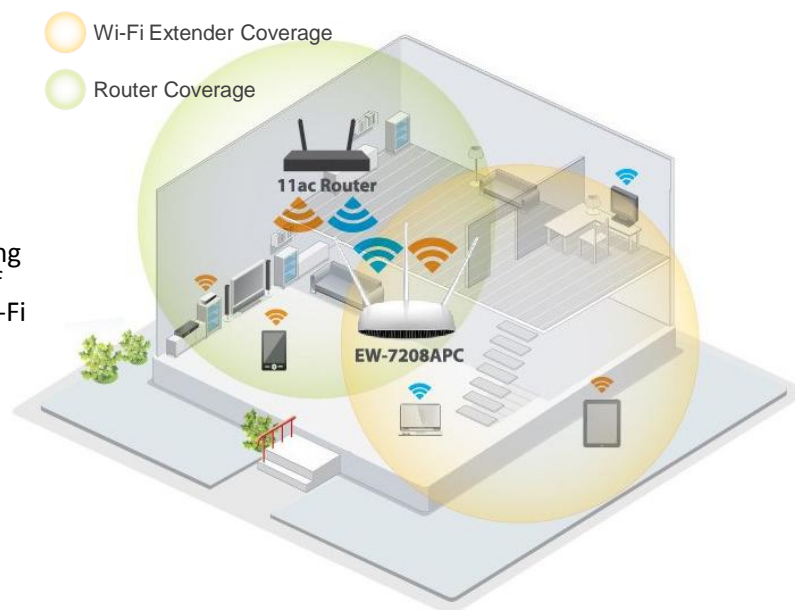
*Access point mode only



Eliminate Wi-Fi Dead Zones & Double Wi-Fi Coverage

Switch the EW-7208APC to range extender mode to extend Wi-Fi coverage to dead zones which your existing Wi-Fi signal can't reach. Increase the signal coverage of your Wi-Fi network for better performance on your Wi-Fi devices.

*Range extender mode only



Guest Network*

Supports a guest network to provide connectivity while isolating guests from your primary network.

*Wi-Fi router mode only



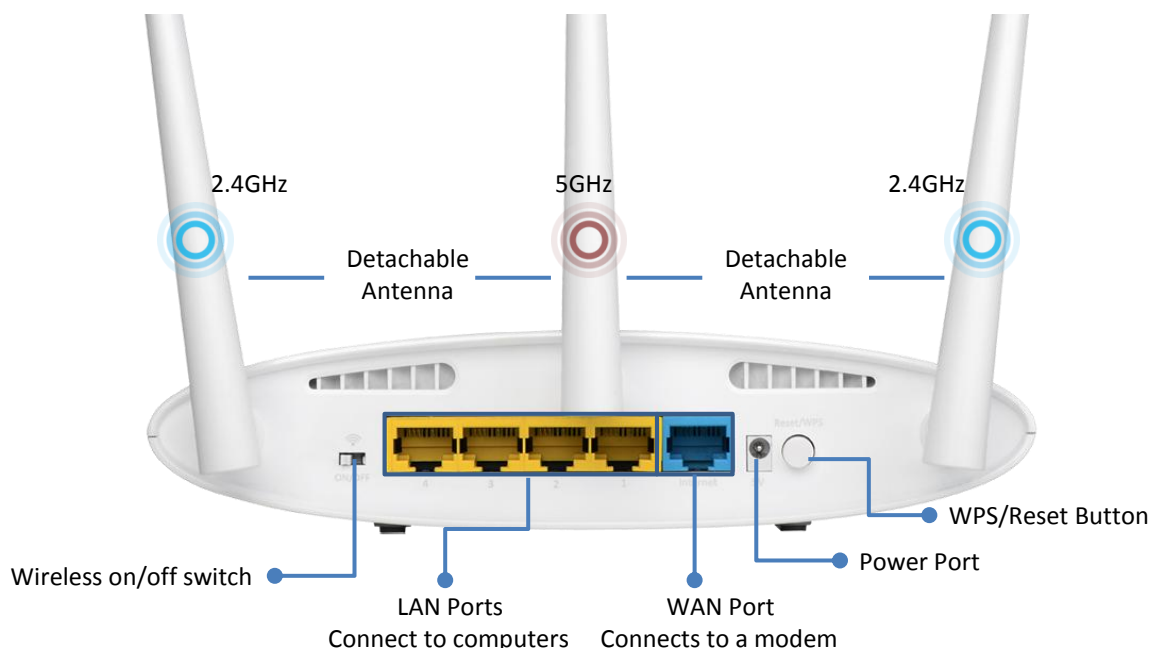
AC750 Multi-Function Dual-Band Access Point / Range Extender

EW-7208APC

TECHNICAL SPECIFICATIONS

FUNCTIONS	HARDWARE INTERFACE	MANAGEMENT & INSTALLATION
<ul style="list-style-type: none"> Supports access point, range extender, wireless bridge, Wi-Fi router and WISP modes Up to 8 SSIDs (2.4GHz x 4 and 5GHz x 4) with VLAN support Wi-Fi access control Wi-Fi schedule control Fault tolerance firmware upgrade 	<ul style="list-style-type: none"> 1 x RJ-45 10/100M WAN port 4 x RJ-45 10/100M LAN port LED indicators: Power, Internet, 2.4GHz wireless, 5GHz wireless 2 x 2.4GHz detachable antennas and 1 x 5GHz detachable antenna WPS/Reset button Wireless on/off switch 	<ul style="list-style-type: none"> Multi-language user interface Firmware upgradable Smart iQ Setup, no CD required Supports smartphone, tablet or laptop setup (iOS 4 or Android 4 and above are required for smartphone or tablet setup).
SECURITY	OUTPUT POWER & SENSITIVITY (5GHz)	OUTPUT POWER & SENSITIVITY (2.4GHz)
<ul style="list-style-type: none"> Supports WPS (Wi-Fi Protected Setup) Supports 64/128-bit WEP, WPA and WPA2 encryption Supports WPA RADIUS Supports 802.1x authentication 	<p>Output Power</p> <ul style="list-style-type: none"> 11a(54Mbps): 16±1.5dBm 11n(20MHz, MCS7): 16±1.5dBm 11n(40MHz, MCS7): 16±1.5dBm 11ac(80MHz, MCS9): 14±1.5dBm <p>Receive Sensitivity</p> <ul style="list-style-type: none"> 11a(54Mbps): -69±2dBm 11n(20MHz, MCS7): -68±2dBm 11n(40MHz, MCS7): -64±2dBm 11ac(80MHz, MCS9): -57±2dBm 	<p>Output Power</p> <ul style="list-style-type: none"> 11b (11Mbps): 18±1.5dBm 11g (54Mbps): 17±1.5dBm 11n (20MHz, MCS7): 16±1.5dBm 11n (40MHz, MCS7): 16±1.5dBm <p>Receive Sensitivity</p> <ul style="list-style-type: none"> 11b(11Mbps): -83±2dBm 11g (54Mbps): -69±2dBm 11n(20MHz, MCS7): -67±2dBm 11n(40MHz, MCS7): -64±2dBm
POWER ADAPTER	MEMORY	HUMIDITY & TEMPERATURE
<ul style="list-style-type: none"> 5VDC, 1.5A 	<ul style="list-style-type: none"> 4MB Flash 64MB RAM 	<ul style="list-style-type: none"> 10-90% (non-condensing) 0-40°C
DIMENSIONS	WEIGHT	CERTIFICATIONS
<ul style="list-style-type: none"> 190.2mm x 141mm x 42mm 	<ul style="list-style-type: none"> 260g 	<ul style="list-style-type: none"> FCC/CE

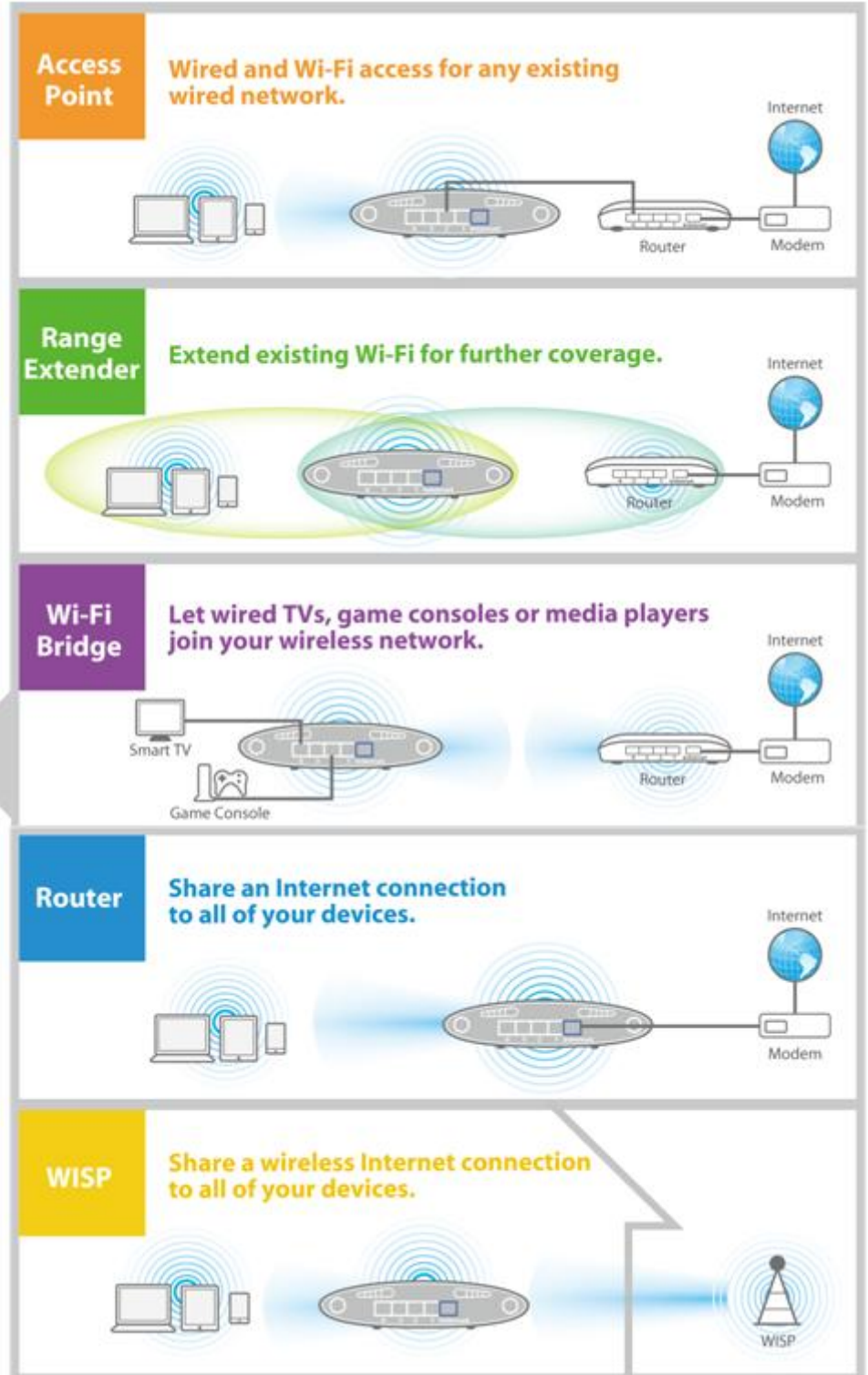
HARDWARE INTERFACE



AC750 Multi-Function Dual-Band Access Point / Range Extender

EW-7208APC

APPLICATION DIAGRAM



Maximum performance, actual data rates, and coverage will vary depending on network conditions and environmental factors. Product specifications and design are subject to change without notice.

Copyright © 2014 Edimax Technology Co. Ltd. All rights reserved.

www.edimax.com