

Gemini RE11S



Faster Speed
Upgraded 11ac dual-band Wi-Fi for video streaming



Smart Roaming
Keep one Wi-Fi name for a seamless connection



Stronger Signal
Always connected to the best Wi-Fi Signal



3-Modes-in-One
Wi-Fi Extender, Access Point & Wi-Fi Bridge



Universal Compatibility
Works with any router, zero configuration

AC1200 Dual-Band Home Roaming Wi-Fi Upgrade Extender

Introduction

The Gemini RE11S extender builds an intelligent home roaming Wi-Fi signal with one Wi-Fi name and password. The upgrade extender works with any Edimax Gemini whole home devices and automatically detects and switches your Wi-Fi device to the best available Wi-Fi signal for a more natural, seamless experience. Freely move in your home without signal drops or losing connections.

It's designed to upgrade and extend your Wi-Fi without replacing your existing router and features supercharged 802.11ac speed. Just plug and play to instantly upgrade an 11n network to dual-band 11ac wireless with speeds up to 1200Mbps (300Mbps on 2.4GHz + 867Mbps on 5GHz) – ideal for video streaming.

Seamless Roaming with One Wi-Fi Name

Fast, reliable roaming for a seamless connection while you move around your home. The Gemini RE11S uses the same Wi-Fi name/password and automatically switches intelligently.

*Works with any Edimax Gemini whole home devices, such as Gemini RE11, which support home roaming Wi-Fi.



The Best Home Wi-Fi in Every Room

The Gemini RE11S keeps detecting the Wi-Fi signal quality for your Wi-Fi devices, and ensure they're always connected to the best Wi-Fi signal. It is a great upgrade kit for you to build an ultra-fast whole home Wi-Fi coverage. No buffering or losing connection in every room of your home.



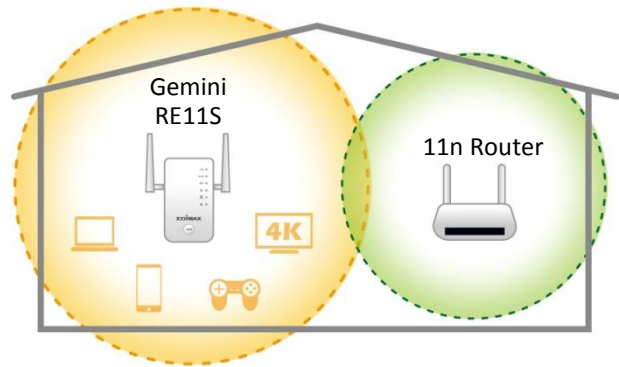
Faster 802.11ac Speeds

Upgrade your single-band 2.4GHz Wi-Fi to 802.11ac dual-band Wi-Fi with 5GHz ideal for video streaming. Get the latest 11ac high-speed up to 1200Mbps (N300 + AC867Mbps), and extend both 2.4GHz and 5GHz wireless connections at the same time.



Easy Home Wi-Fi 11ac Upgrade

Just plug in the Gemini RE11S to upgrade your single-band 2.4GHz Wi-Fi to dual-band with better coverage, without replacing your router and with zero configuration required.



Three Modes in One

The Gemini RE11S can work as Wi-Fi extender, access point or Wi-Fi bridge. Just configure the mode you need for your network environment using the smart iQ Setup wizard and enjoy surfing the web.

3-in-1 for flexible network applications

Wi-Fi Extender	Access Point	Wi-Fi Bridge
Extend existing Wi-Fi for further coverage.	Create Wi-Fi access for any existing wired network.	Let wired TVs, game consoles or media players join your wireless network.

Smart iQ Setup

Features user-friendly browser-based iQ Setup for smart, automatic and quick installation. iQ Setup automatically detects the available Wi-Fi networks nearby and helps you establish a connection in a few seconds.

*Wi-Fi Extender mode only.

iQ Just **Plug** and **Extend**

- 1** Just plug it in

Use a Wi-Fi device to connect to the extender
- 2** Type the web access URL in your browser*

*iQ Setup will guide you through setup
- 3** Extend your Wi-Fi in minutes!

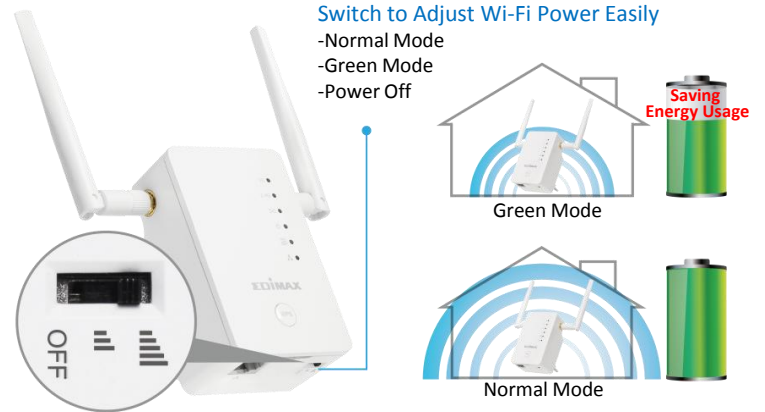
Works with any Wi-Fi Router

Universal router compatibility and easy web-based iQ Setup for quick and easy installation.



Green Wi-Fi Power Switch

Featuring a new hardware switch to adjust between normal and green Wi-Fi transmit power (the strength of the Wi-Fi signal), or switch off the power with one click. If you only need Wi-Fi in a smaller house, you can switch to green mode to reduce power by 75% and conserve energy.



Find the Best Wi-Fi Location

Designed with a signal strength LED which lets you see the Wi-Fi signal strength received from the router and guides you to find the best setup location.

*Wi-Fi Extender or Wi-Fi Bridge mode only.

Signal Strength LED

- 😊 On: Excellent Signal
- 😊 Flashing: Good Signal
- 😞 Flashing Rapidly: Poor Signal
- 😞 Off: No Signal



Install the extender where the signal strength LED is off (but not flashing) for optimal Wi-Fi performance.

Features

- **Home Roaming Wi-Fi Upgrade Extender** so your Wi-Fi is always connected for fast, seamless roaming Wi-Fi.
 - No hassle with switching Wi-Fi network name and password.
 - Reliable Wi-Fi that stays connected when you move around your home. (Works with any Edimax Gemini series devices which support home roaming Wi-Fi.)
- **Home Wi-Fi in Every Room** to provide the best Wi-Fi everywhere in your home.
- **Faster 802.11ac Speeds:** AC1200 concurrent dual-band Wi-Fi with speeds (2.4GHz 300Mbps & 5GHz 867Mbps).
- **Upgrade Home Wi-Fi to 11ac:** upgrade your single-band 2.4GHz Wi-Fi to dual-band with better coverage without replacing your router.
- **Three Modes in One:** Wi-Fi Extender, Access Point or Wi-Fi Bridge.
- **Easy Setup:** One press of the WPS (Wi-Fi Protected Setup) button with zero configuration for easy wireless connections.

SPECIFICATIONS

Gemini RE11S AC1200 Dual-Band Home Roaming Wi-Fi Upgrade Extender

HARDWARE

- | | |
|-----------|--|
| Interface | <ul style="list-style-type: none">• 10/100/1000Mbps Ethernet LAN port• LED Indicator: 5GHz, 2.4GHz, Roaming, Power, WPS, LAN• 1 x Slide switch• 1 x AC plug (EU, UK, US, or AU) |
|-----------|--|

- | | |
|--------|--|
| Button | <ul style="list-style-type: none">• WPS button |
|--------|--|

- | | |
|---------------|--|
| Power Adapter | <ul style="list-style-type: none">• Built-in 5V, 1.5A power module |
|---------------|--|

- | | |
|---------|--|
| Antenna | <ul style="list-style-type: none">• 2 x External detachable antennas |
|---------|--|

- | | |
|------------|---|
| Dimensions | <ul style="list-style-type: none">• 59(W) x 91(H) x 40(D) mm (power plug & antennas are excluded) |
|------------|---|

- | | |
|--------|--|
| Weight | <ul style="list-style-type: none">• 130g |
|--------|--|

WIRELESS

- | | |
|-----------|--|
| Standards | <ul style="list-style-type: none">• IEEE 802.11ac (up to 867Mbps)• IEEE 802.11n (up to 300Mbps)• IEEE 802.11a (up to 54Mbps)• IEEE 802.11g (up to 54Mbps)• IEEE 802.11b (up to 11Mbps) |
|-----------|--|

- | | |
|-----------|--|
| Frequency | <ul style="list-style-type: none">• 5GHz and 2.4GHz concurrent dual-band |
|-----------|--|

- | | |
|--------------------|---|
| Maximum Data Speed | <ul style="list-style-type: none">• 5GHz: up to 867Mbps• 2.4GHz: up to 300Mbps |
|--------------------|---|

- | | |
|----------|---|
| Security | <ul style="list-style-type: none">• 64/128-bit WEP, WPA-PSK and WPA2-PSK encryption• WPS (Wi-Fi Protected Setup) Configuration |
|----------|---|

OTHERS

- | | |
|---------------|---|
| Certification | <ul style="list-style-type: none">• CE, FCC, IC, RoHS |
|---------------|---|

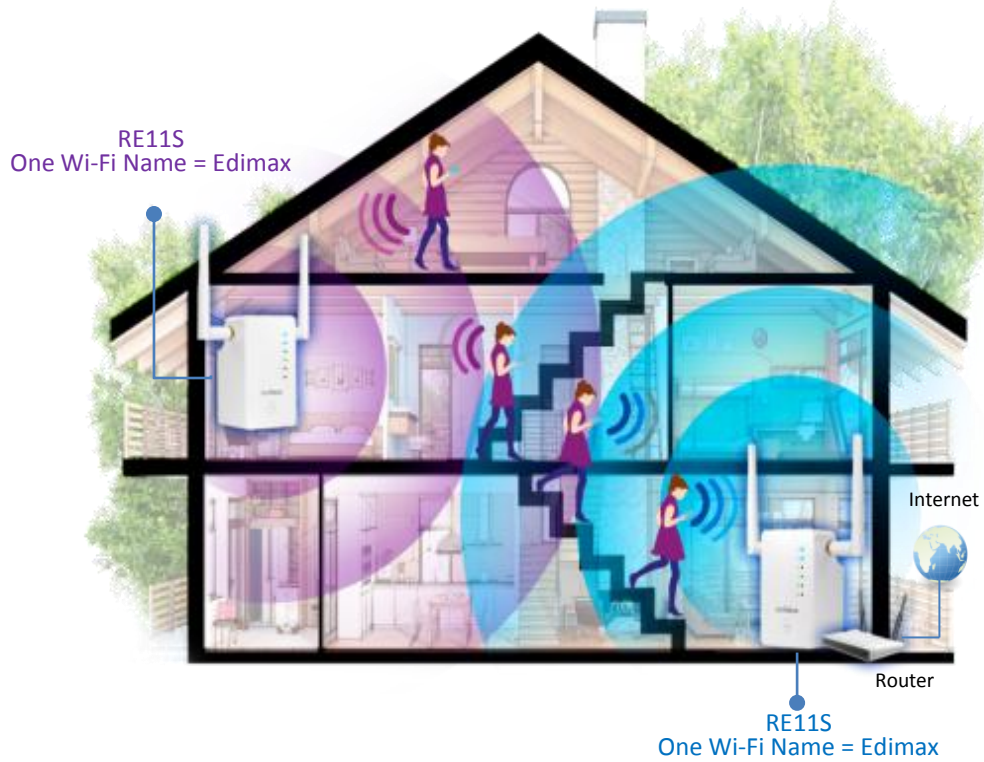
- | | |
|------------|--|
| Management | <ul style="list-style-type: none">• Multi-language user interface• Firmware upgradable• Smart iQ Setup, no CD required |
|------------|--|

- | | |
|---------------------|---|
| System Requirements | <ul style="list-style-type: none">• Existing wireless home network (2.4GHz/5GHz) for Wi-Fi extender/Wi-Fi bridge mode, or Cable/xDSL modem router for access point mode• Mobile device or computer with IEEE802.11ac/a/b/g/n Wi-Fi capability and web browser for software configuration (Internet Explorer, Google Chrome, Firefox, Opera or Safari latest version) |
|---------------------|---|

- | | |
|-------------|--|
| Environment | <ul style="list-style-type: none">• Operating Temperature: 0°C~40°C (32°F ~104°F)• Operating Humidity: 10%~90% non-condensing |
|-------------|--|

- | | |
|------------------|---|
| Package Contents | <ul style="list-style-type: none">• One Gemini RE11S Home Roaming Wi-Fi Extender• One Ethernet cable• Quick installation guide• CD with multi-language QIG and user manual• Access key card |
|------------------|---|

Application Diagram



Interface Diagram



*Maximum performance, actual data rates, and coverage will vary depending on network conditions and environmental factors. Product specifications and design are subject to change without notice.

Copyright © 2017 Edimax Technology Co. Ltd. All rights reserved.