

COMFAST

USB Wireless Adapter Quick Installation Guide



809000434 版本V1.0

CONTENTS

Hardware Installation	1
Drive Software Installatio	1
Network connection Settings	4
Copyright information	7

1 Hardware Installation

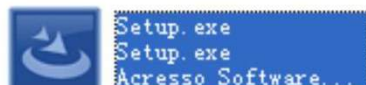
There are two methods to install the wireless adapter:

(1) Plug the wireless adapter into the computer's USB port directly.

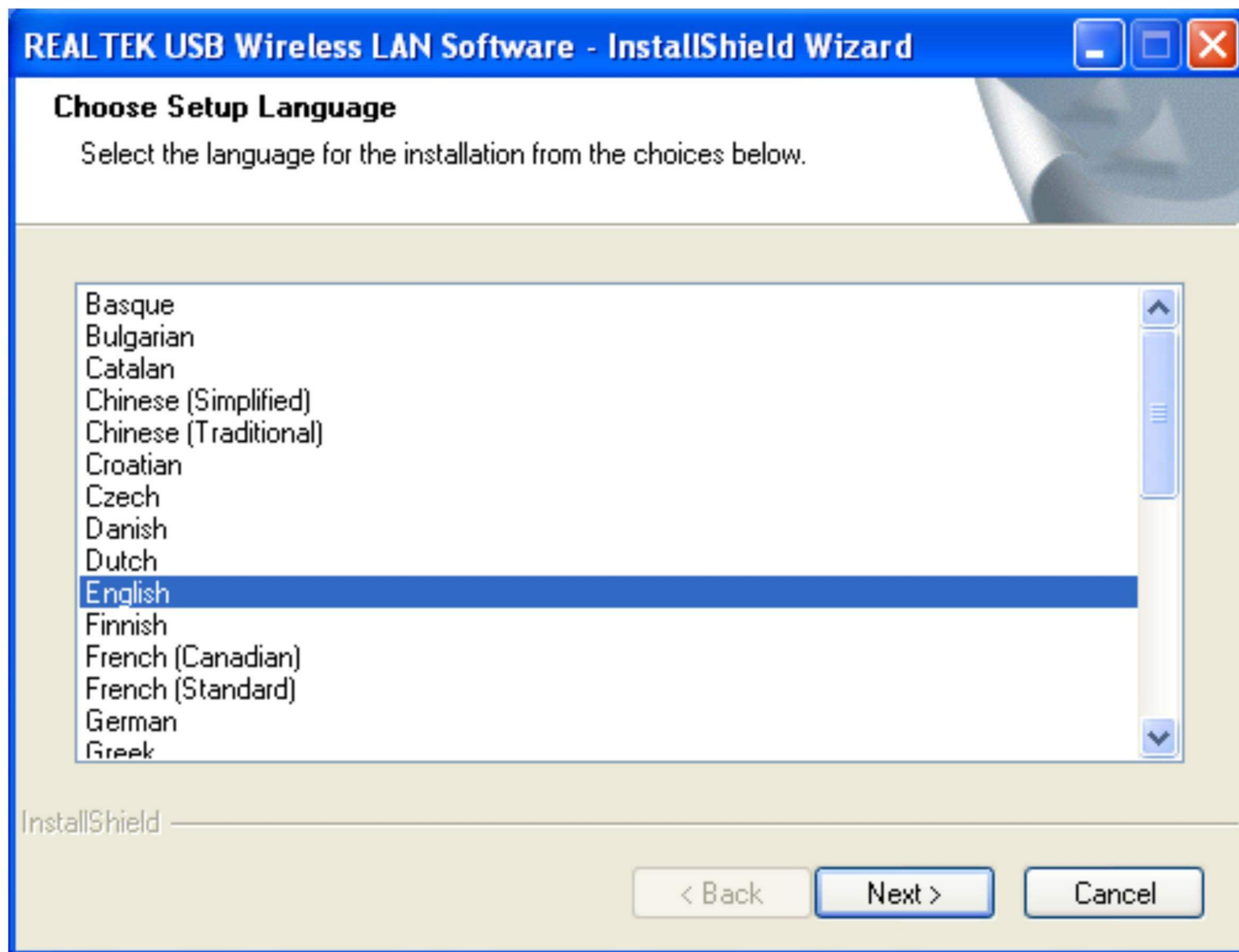
(2) Connect the wireless adapter with computer by using a USB extension cable&base. (Prior to buy USB base)

Note: When use it with desktop computer, suggest connecting it to any of the rear USB ports of the computer by using a USB extension cable&base, extending it to the desk for use, more effective. (Most desktop computers' front USB ports are unavailable or have power shortage)

2 Drive Software Installation


(1). Put the CD into the drive, click the CD drive and find "Setup. exe", double click this application and operate the setup program. 

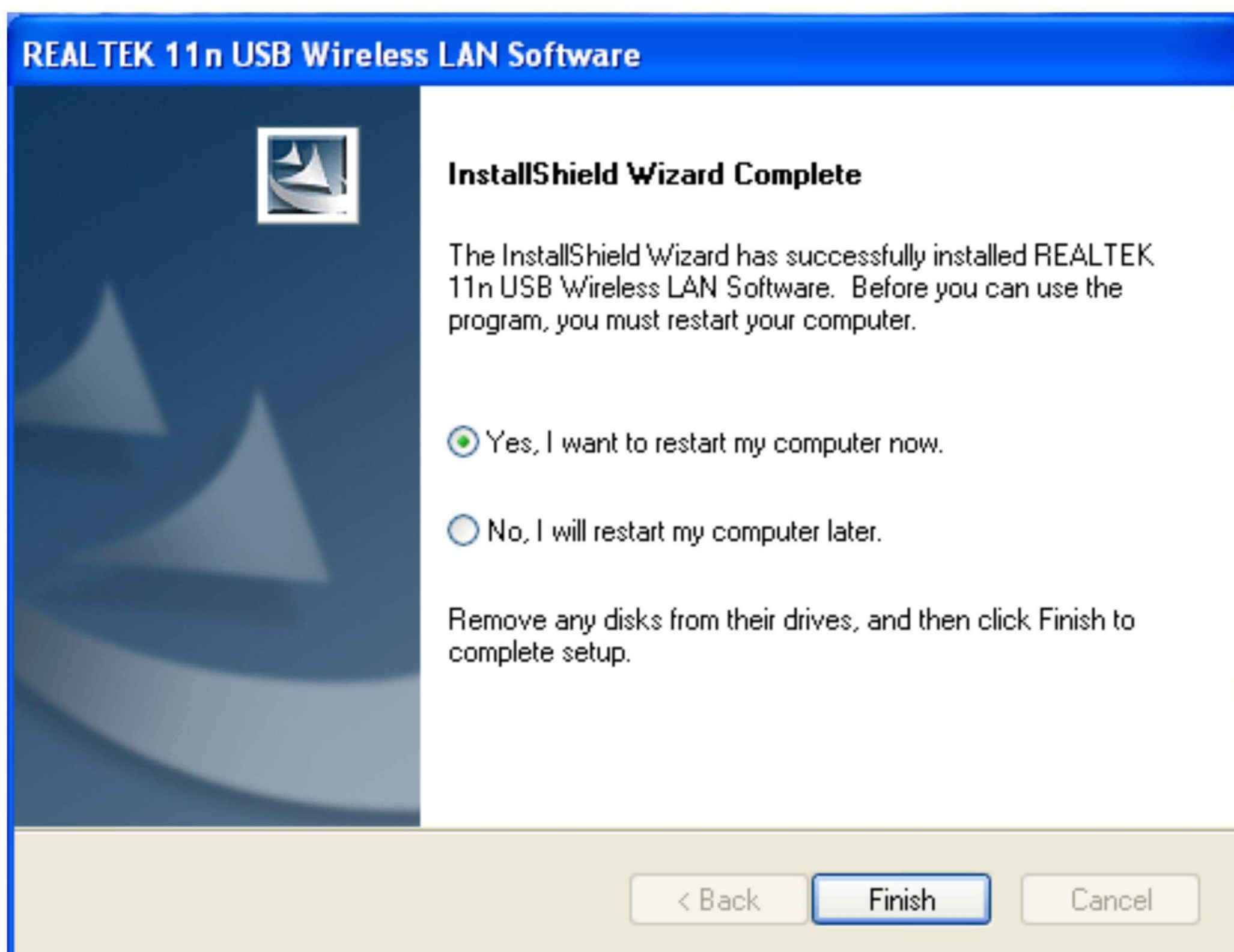
2. Choose setup language click  as show in the picture below:




3. Click  to continue, as shown in the picture below:



4. Choose Yes, I want to restart my computer now. click  and wait computer to restart.

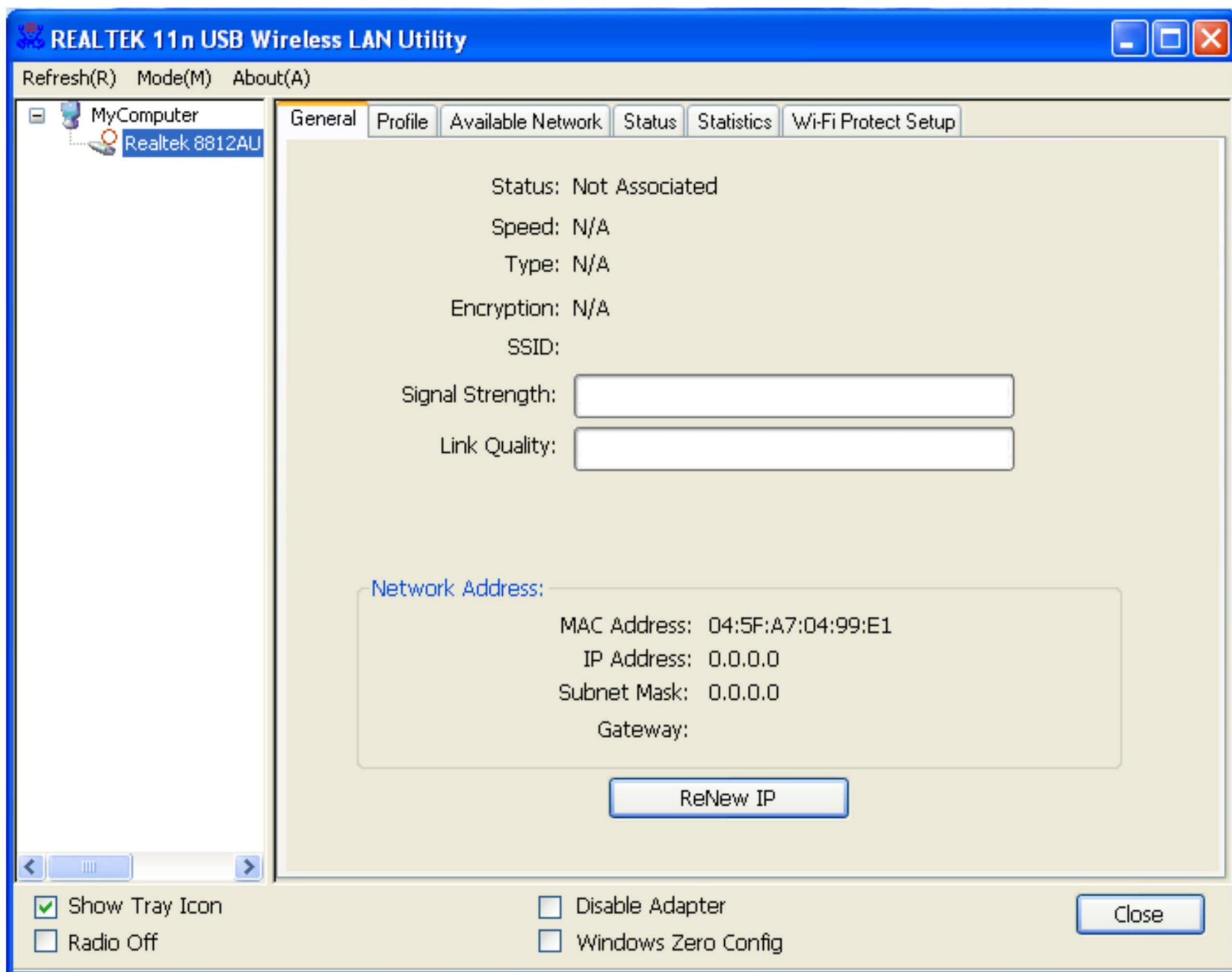


5. After successful installation, computer system tray will appear icon  (REALTEK client management software) at the lower right corner of the task bar.

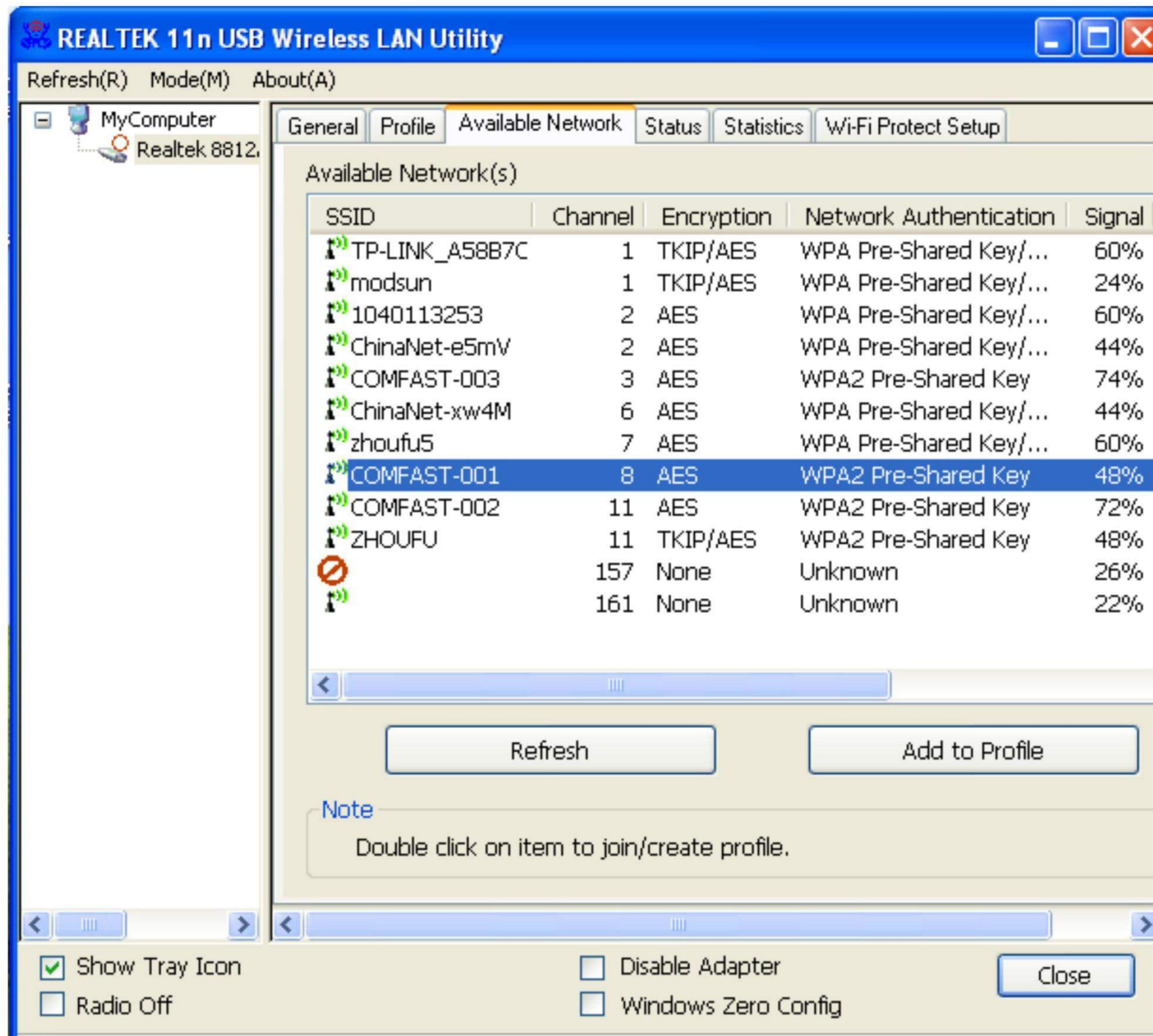
Note: After installation, if the icon  (a blue crap shaped figure) bottom right corner appears a red cross, there are two possible situations, one is the wireless adapter losing connection from computer, please try other USB ports to connect, another is the failure of installation, please try to download the newest drive software from our official website and reinstall.

3 Network connection Settings

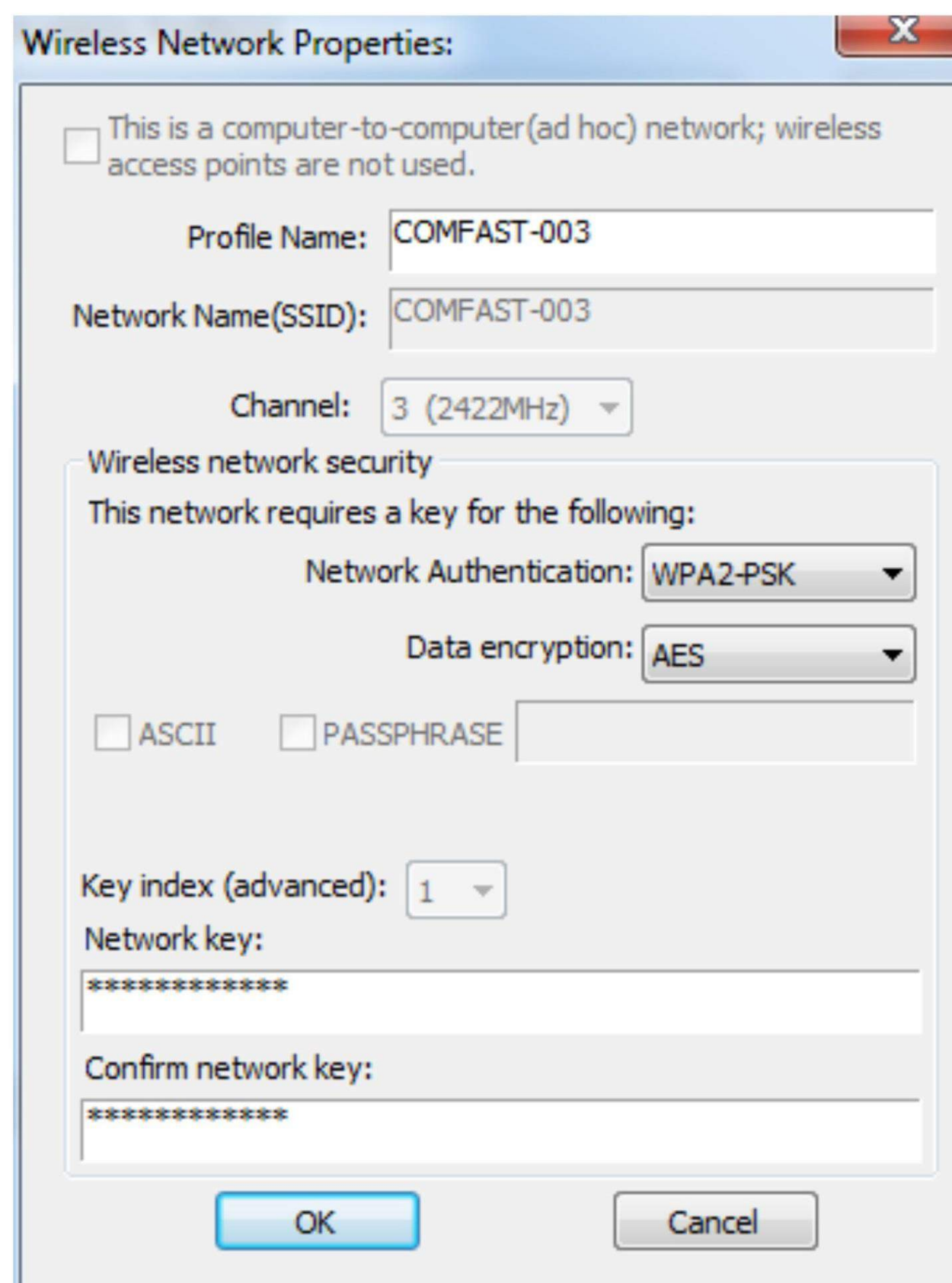
(1) Double click the icon  , open the wireless adapter's client management software, as shown in the picture below:



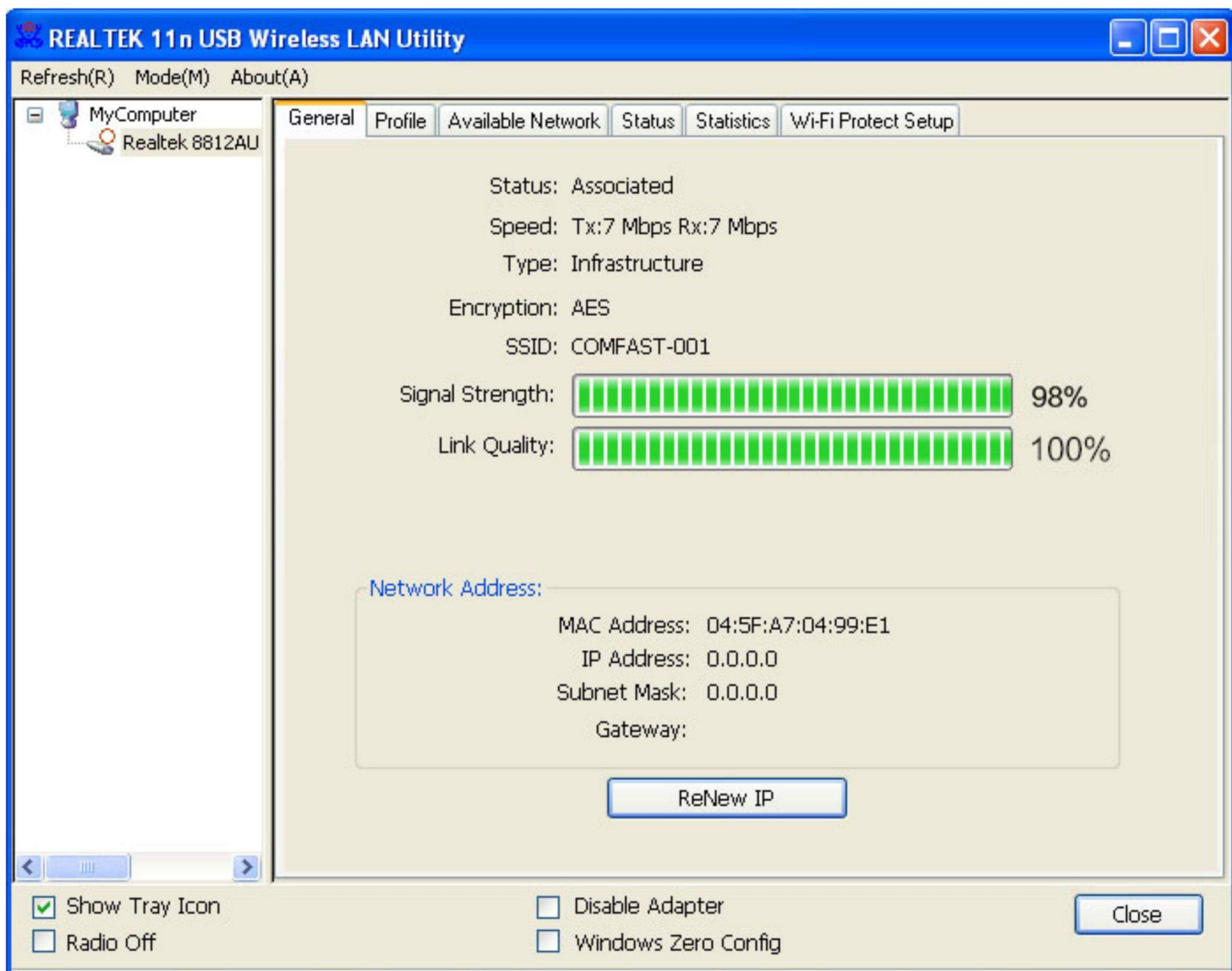
(2).Click "Available Network", choose the wireless network SSID which you want to connect, then click "Add to Profile", as shown in the picture below:



(3). Enter network key and confirm network key, click "OK", as shown in the picture below:



(4) After successful connection, the General interface will show Signal Strength and Link Quality, as shown in the picture as below:



Note: If it could not get the IP address or could not receive data packets, it maybe password error, please reenter the correct password and get the IP address, as to the fix IP address network, the IP address must be set manually.

Copyright information

Statement

**Shenzhen Four Seas Global Link
Network Technology Co., Ltd.**

All rights reserved.

Without the written permission of Shenzhen Four Seas Global Link Network Technology Co., Ltd., any enterprise units or individuals shall not be unauthorized to counterfeit / copy / transcribe / translate parts or all of this manual contents, shall not spread products or use for the purposes of any business or profits in any form or any means.

COMFAST is the registered brand owned by Shenzhen Four Seas Global Link Network Technology Co., Ltd. All the other brands mentioned in this manual are all of their own.

The product specifications and information mentioned in this manual are for reference only, if have contents updated, not for further notice unless have special agreement. This manual only made as guidance for use, all the statements / information etc. in this manual do not constitute a guarantee in any form.

Customer Service Hot line: 0086-755-25322926

Manufacturer: Shenzhen Four Seas Global Link
Network Technology Co., Ltd.

Address: Room 6.07-6.10, Block B TAOJINDI Electronic
business incubation base, Tenglong Road,
Longhua Disirict, Shenzhen, China

Website: www.comfast.cn

This equipment has been tested and found to comply with the limits for a Class B digital device, pursuant to part 15 of the FCC Rules. These limits are designed to provide reasonable protection against harmful interference in a residential installation. This equipment generates, uses and can radiate radio frequency energy and, if not installed and used in accordance with the instructions, may cause harmful interference to radio communications. However, there is no guarantee that interference will not occur in a particular installation. If this equipment does cause harmful interference to radio or television reception, which can be determined by turning the equipment off and on, the user is encouraged to try to correct the interference by one or more of the following measures:

- Reorient or relocate the receiving antenna.
- Increase the separation between the equipment and receiver.
- Connect the equipment into an outlet on a circuit different from that to which the receiver is connected.
- Consult the dealer or an experienced radio/TV technician for help.

Caution: Any changes or modifications to this device not explicitly approved by manufacturer could void your authority to operate this equipment.

This device complies with part 15 of the FCC Rules. Operation is subject to the following two conditions: (1) This device may not cause harmful interference, and (2) this device must accept any interference received, including interference that may cause undesired operation.

The device has been evaluated to meet general RF exposure requirement. The device can be used in portable exposure condition without restriction.