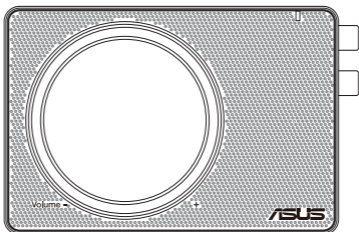




WMP-N12

Wireless-N300 Audio Streamer



Quick Start Guide

Safety information

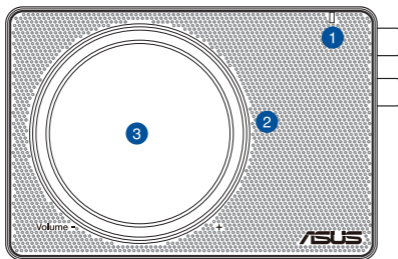
- Do not use this device near water.
- Clean this device only with soft cloth. Household cleaners or solvents might damage the surface on ASUS WMP-N12.
- Use the power adapter in the package or provided by manufacturer only.
- Do not set up this device near any heat sources.

Package contents

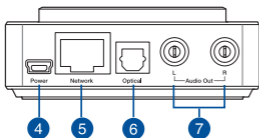
- Two standard RCA cables
- Quick Start Guide
- Warranty card
- 5V/1A power adapter
- Hotline card

Hardware introduction

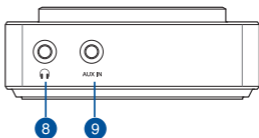
Top view



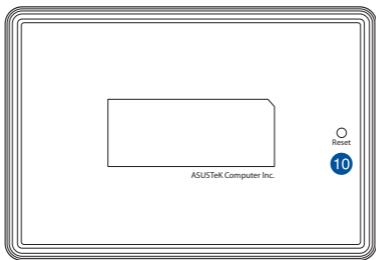
Right view



Left view



Bottom view



1 System LED

Solid orange: ASUS WMP-N12 is booting up.

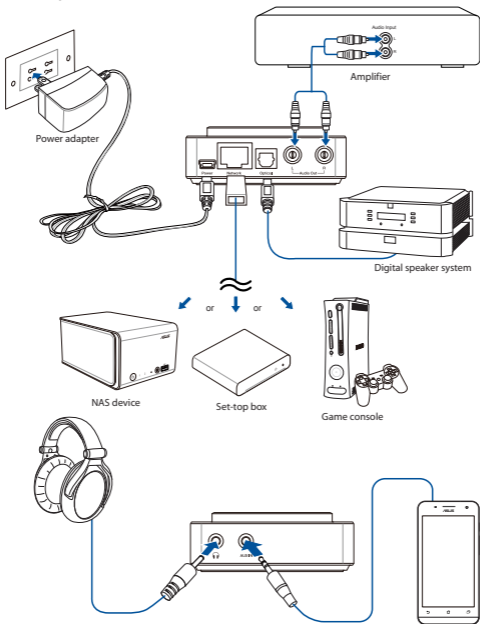
Blinking white: ASUS WMP-N12 is ready to be configured, but it is not connected to any Wi-Fi network.

Solid white: ASUS WMP-N12 has already connected to a Wi-Fi network successfully and is ready to use.

-
- 2 Volume LED**
Indicates the volume of ASUS WMP-N12.
-
- 3 Volume switch**
Adjusts the volume of ASUS WMP-N12.
-
- 4 Power connector**
Plug the power adapter into this connector.
-
- 5 Network port**
Provides additional Internet access for a set-top box, game console or NAS device when ASUS WMP-N12 connects to a Wi-Fi network.
-
- 6 Optical S/PDIF output port**
This port is for digital signal output to your stereo system.
-
- 7 RCA output ports**
These ports are for analog output to your stereo system.
-
- 8 Headphone port**
This port connects to a headphone or speaker.
-
- 9 AUX IN port**
Provides additional analog audio input to your stereo system.
-
- 10 Reset button**
Press this button until all LEDs are blinking to reset or restore the system to its factory default settings.
-

Connecting your ASUS WMP-N12

Connect WMP-N12 to your speaker using a 3.5mm phone cable, RCA cable or Optical cable.



Installing ASUS AiPlayer

Download and install ASUS AiPlayer from Google Play or Apple App Store.



Setting up WMP-N12 and playing music

Launch ASUS AiPlayer. This app will guide you to connect WMP-N12 with your existing Wi-Fi network. Now you can play music with WMP-N12.

Frequently Asked Questions (FAQs)

Q1: If there is no available Wi-Fi network, can I use ASUS WMP-N12 to stream Internet contents?

A: No, you cannot stream Internet contents without Internet connection. But you can still connect your mobile phone to ASUS WMP-N12 (ASUS WMP-N12.xxxx) via Wi-Fi directly for playing music on your phone.

Q2: Why is it that there is no Internet connection even the system LED is solid white?

A: Make sure that your Wi-Fi network can connect to the Internet.

Q3: What kind of audio formats does ASUS WMP-N12 support?

A: ASUS WMP-N12 supports .mp3, .wav and .flac audio formats.

Q4: Can I use ASUS WMP-N12 as a USB sound card?

A: Basically, ASUS WMP-N12 is used for wireless audio streaming. If you want to use it as a USB sound card, you can use a USB cable to connect ASUS WMP-N12 to a Windows or Apple computer. However, ASUS will NOT provide any support under this usage scenario.

Q5: How do I reset ASUS WMP-N12?

A: Power on ASUS WMP-N12 and wait for the system LED to blink white. Press the reset button on the bottom of your ASUS WMP-N12 until all LEDs are blinking then release the reset button. ASUS WMP-N12 will reboot into the factory defaults.

Q6: I cannot find my Wi-Fi network during the setup process. What should I do?

- A:
1. ASUS WMP-N12 supports WPA/WPA2 encryption. Ensure that your Wi-Fi network is encrypted using these two types.
 2. Place ASUS WMP-N12 close to your Wi-Fi network. If you put too far away from your Wi-Fi network, ASUS WMP-N12 might not reach the Wi-Fi signal.

Q7: Why cannot I find some of my audio tracks on ASUS AiPlayer?

A: ASUS WMP-N12 supports .mp3, .wav and .flac audio formats. ASUS AiPlayer will not display the unsupported audio formats.

Q8: Why cannot I play some Internet radios to ASUS WMP-N12?

A: ASUS WMP-N12 supports .mp3, .wav and .flac audio formats. ASUS WMP-N12 will not play the Internet radios using unsupported audio formats.

The Internet connection quality might also affect the streaming quality.

Q9: Can I use the headphone port and the RCA output connector simultaneously?

A: No, ASUS WMP-N12 supports only one analog audio output.

Q10: How do I connect ASUS WMP-N12 to another Wi-Fi network?

A: ASUS WMP-N12 can only connect to one Wi-Fi network at a time. If you want to connect it to another Wi-Fi network, reset your WMP-N12 and use ASUS AiPlayer to set up and connect to a new Wi-Fi network.

Q11: Why cannot I play music from the AUX IN port to the optical S/PDIF port?

A: The AUX IN port is designed only for extra analog connectivity to your stereo system. It does not provide additional analog to digital converters.

Q12: Why there is no sound when playing music?

- A:
1. Check your speaker and ensure that it is powered on and its volume is properly set up.
 2. Ensure that WMP-N12 is properly connected to your speaker.
 3. Ensure the volume of WMP-N12 is properly set up.

Notices

Federal Communications Commission Statement.

This device complies with Part 15 of the FCC Rules. Operation is subject to the following two conditions:

- This device may not cause harmful interference.
- This device must accept any interference received, including interference that may cause undesired operation.

This equipment has been tested and found to comply with the limits for a class B digital device, pursuant to part 15 of the FCC Rules. These limits are designed to provide reasonable protection against harmful interference in a residential installation.

This equipment generates, uses and can radiate radio frequency energy and, if not installed and used in accordance with the instructions, may cause harmful interference to radio communications. However, there is no guarantee that interference will not occur in a particular installation. If this equipment does cause harmful interference to radio or television reception, which can be determined by turning the equipment off and on, the user is encouraged to try to correct the interference by one or more of the following measures:

- Reorient or relocate the receiving antenna.
- Increase the separation between the equipment and receiver.
- Connect the equipment into an outlet on a circuit different from that to which the receiver is connected.

WARNING! Any changes or modifications not expressly approved by the party responsible for compliance could void the user's authority to operate the equipment.

Prohibition of Co-location

This device and its antenna(s) must not be co-located or operating in conjunction with any other antenna or transmitter.

IMPORTANT: Radiation Exposure Statement: This equipment complies with FCC radiation exposure limits set forth for an uncontrolled environment. End users must follow the specific operating instructions for satisfying RF exposure compliance. To maintain compliance with FCC exposure compliance requirement, please follow operation instruction as documented in this manual.

WARNING! This equipment must be installed and operated in accordance with provided instructions and the antenna(s) used for this transmitter must be installed to provide a separation distance of at least 20 cm from all persons and must not be co-located or operating in conjunction with any other antenna or transmitter.
