

2.4GHz Wireless 802.11n (DRAFT) PCI Adapter

User's Guide

Version 0.95

Copyright

This publication, including all photographs, illustrations and software, is protected under international copyright laws, with all rights reserved. Neither this manual, nor any of the material contained herein, may be reproduced without written consent of the author.

Copyright 2006

Version 1.0 (June, 2006)

Disclaimer

The information in this document is subject to change without notice. The manufacturer makes no representations or warranties with respect to the contents hereof and specifically disclaims any implied warranties of merchantability or fitness for any particular purpose. The manufacturer reserves the right to revise this publication and to make changes from time to time in the content hereof without obligation of the manufacturer to notify any person of such revision or changes.

Trademark recognition

All product names used in this manual are the properties of their respective owners and are acknowledged.

Federal Communication Commission Interference Statement

This equipment has been tested and found to comply with the limits for a Class B digital device, pursuant to Part 15 of the FCC Rules. These limits are designed to provide reasonable protection against harmful interference in a residential installation. This equipment generates, uses and can radiate radio frequency energy and, if not installed and used in accordance with the instructions, may cause harmful interference to radio communications. However, there is no guarantee that interference will not occur in a particular installation. If this equipment does cause harmful interference to radio or television reception, which can be determined by turning the equipment off and on, the user is encouraged to try to correct the interference by one of the following measures:

- Reorient or relocate the receiving antenna.
- Increase the separation between the equipment and receiver.
- Connect the equipment into an outlet on a circuit different from that to which the receiver is connected.
- Consult the dealer or an experienced radio/TV technician for help.

FCC Caution: Any changes or modifications not expressly approved by the party responsible for compliance could void the user's authority to operate this equipment.

This device complies with Part 15 of the FCC Rules. Operation is subject to the following two conditions: (1) This device may not cause harmful interference, and (2) this device must accept any interference received, including interference that may cause undesired operation.

IMPORTANT NOTE:

FCC Radiation Exposure Statement:

This equipment complies with FCC radiation exposure limits set forth for an uncontrolled environment. This equipment should be installed and operated with minimum distance 20cm between the radiator & your body.

This transmitter must not be co-located or operating in conjunction with any other antenna or transmitter.

U-MEDIA declares that US model of WPC-370A (FCC ID: SI5WPC370A) is limited in CH1-CH11 for 2.4G band by specific firmware controlled by the manufacturer and is not user changeable.

CE Mark Warning

This is a Class B product. In a domestic environment, this product may cause radio interference, in which case the user may be required to take adequate measures.

This transmitter must not be co-located or operation in conjunction with any other antenna or transmitter.





Table of Contents

Federal Communications Commission Interference statement	3
CE Mark Warning	4
Chapter 1 - Getting Started with the WPC-370A	6
Chapter 2 - Wireless LAN Networking	7
Transmission Rate (Transfer Rate)	7
Type of Wireless Networks	7
Wireless LAN Security	11
Chapter 3 - Hardware and Wireless Utility	13
About Your 11n (Draft) Wireless PCI Adapter	13
Package Content	13
System Requirement	13
LED Definition	13
Hardware and Wireless Utility Installation	14
Using the Utility to Configure Your Network	17
Chapter 4 – Maintenance	26
Uninstall the Driver	26
Uninstall the Client Utility	26
Upgrading the Wireless Utility	26
Glossary	27

Chapter 1 - Getting Started with the WPC-370A

Congratulations on purchasing the WPC-370A! This manual provides information for setting up and configuring the WPC-370A. This manual is intended for both home users and professionals. It is not required to read some of the more technical information in this manual (such as in “Wireless LAN Networking” and “Configuring Wireless Security”) to operate and enjoy the WPC-370A. It is included for your reference only.

The following conventions are used in this manual:

 NOTE	THE NOTE SYMBOL INDICATES ADDITIONAL INFORMATION ON THE TOPIC AT HAND.
 TIP	THE TIP SYMBOL INDICATES HELPFULL INFORMATION AND TIPS TO IMPROVE YOUR NETWORK EXPERIENCE.
 CAUTION	THE CAUTION SYMBOL ALERTS YOU TO SITUATIONS THAT MAY DEGRADE YOUR NETWORKING EXPERIENCE OR COMPROMISE YOUR SECURITY.
 IMPORTANT	LIKE NOTES AND TIPS, THE IMPORTANT SYMBOL INDICATES INFORMATION THAT CAN IMPROVE NETWORKING. THIS INFORMATION SHOULD NOT BE OVERLOOKED.

Chapter 2 - Wireless LAN Networking

This section provides background information on wireless LAN networking technology.



THE INFORMATION IN THIS SECTION IS FOR YOUR REFERENCE. CHANGING NETWORK SETTINGS AND PARTICULARLY SECURITY SETTINGS SHOULD ONLY BE DONE BY AN AUTHORIZED ADMINISTRATOR.

Transmission Rate (Transfer Rate)

The WPC-370A provides various transmission (data) rate options for you to select. In most networking scenarios, the factory default Fully Auto setting proves the most efficient. This setting allows your WPC-370A to operate at the maximum transmission (data) rate. When the communication quality drops below a certain level, the WPC-370A automatically switches to a lower transmission (data) rate. Transmission at lower data speeds is usually more reliable. However, when the communication quality improves again, the WPC-370A gradually increases the transmission (data) rate again until it reaches the highest available transmission rate.

Types of Wireless Networks

Wireless LAN networking works in either of the two modes: ad-hoc and infrastructure. In infrastructure mode, wireless devices communicate to a wired LAN via access points. Each access point and its wireless devices are known as a Basic Service Set (BSS). An Extended Service Set (ESS) is two or more BSSs in the same subnet. In ad hoc mode (also known as peer-to-peer mode), wireless devices communicate with each other directly and do not use an access point. This is an Independent BSS (IBSS).

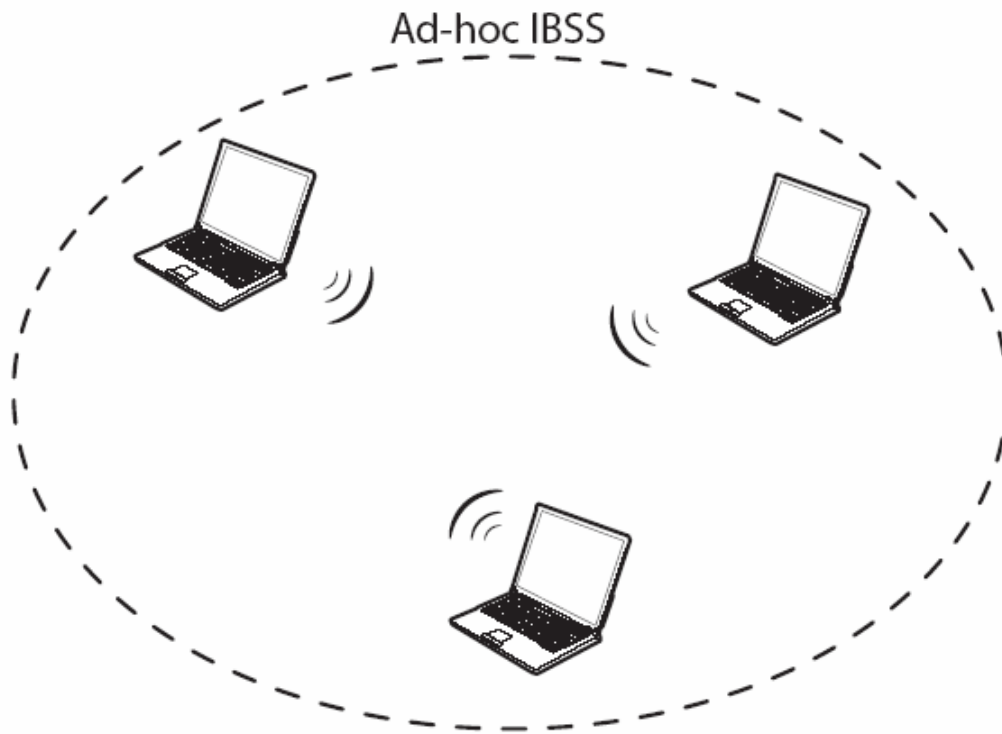
To connect to a wired network within a coverage area using access points, set the WPC-370A operation mode to Infrastructure (BSS). To set up an independent wireless workgroup without an access point, use Ad-hoc (IBSS) mode.

AD-HOC (IBSS) NETWORK

Ad-hoc mode does not require an access point or a wired network. Two or more wireless stations communicate directly to each other. An ad-hoc network may sometimes be referred to as an

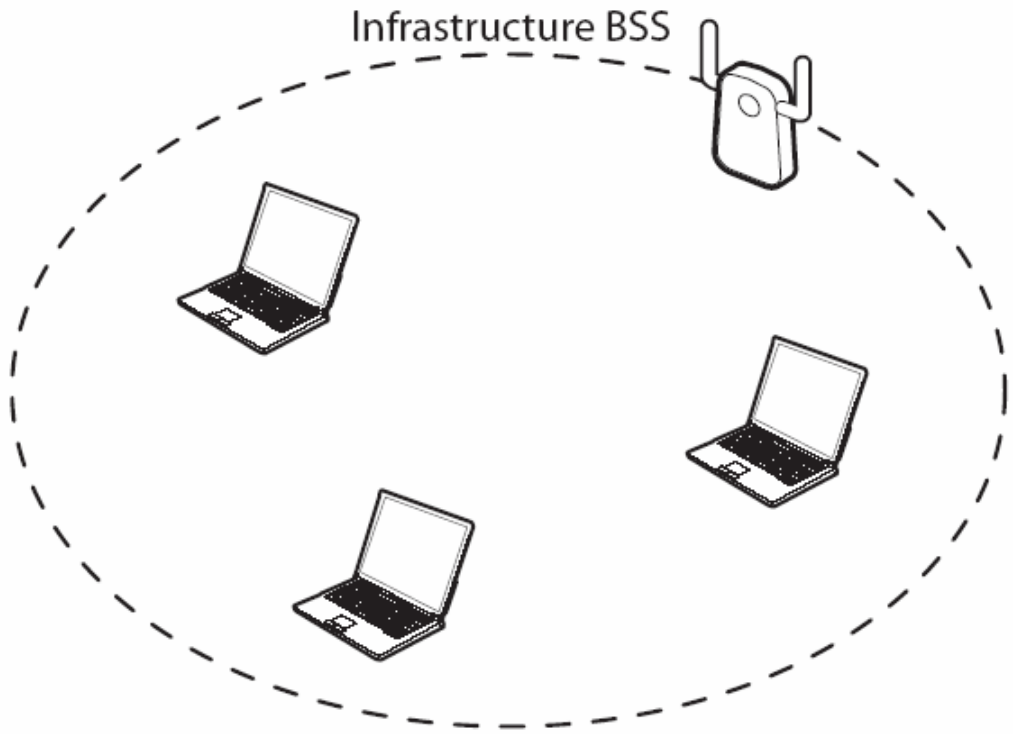
Independent Basic Service Set (IBSS).

To set up an ad-hoc network, configure all the stations in ad-hoc mode. Use the same SSID and channel for each station.



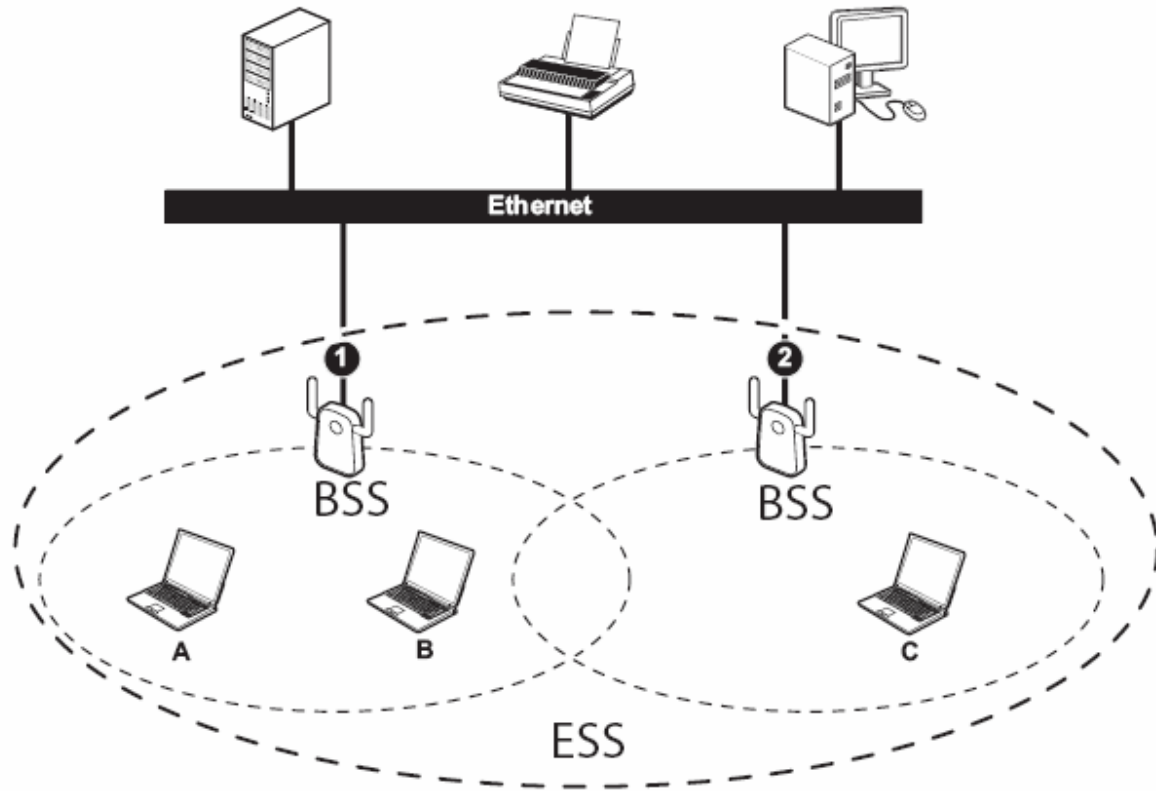
Ad-hoc (also known as peer-to-peer) network diagram

When a number of wireless stations are connected using a single access point, you have a Basic Service Set (BSS).



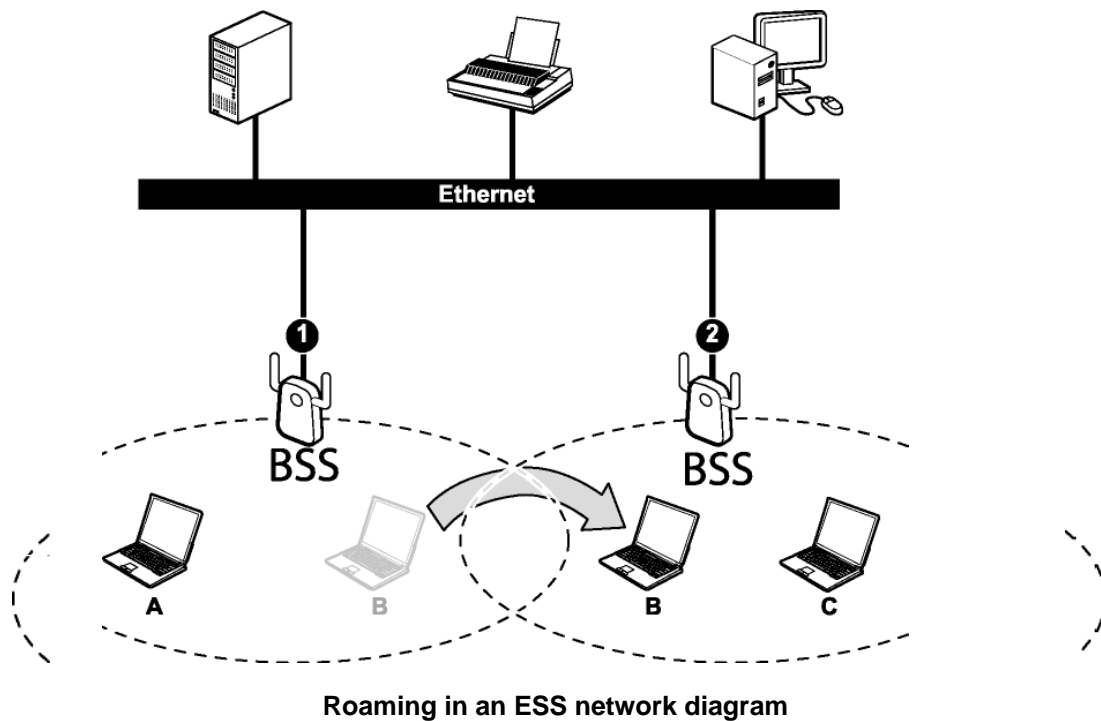
Infrastructure (IBSS) network diagram

In the ESS diagram below, communication is done through the access points, which relay data packets to other wireless stations or devices connected to the wired network. Wireless stations can then access resources, such as a printer, on the wired network.



Infrastructure (ESS) network diagram

In an ESS environment, users are able to move from one access point to another without losing the connection. In the diagram below, when the user moves from BSS (1) to BSS (2) the WPC-370A automatically switches to the channel used in BSS (2).



Wireless LAN Security

Because wireless networks are not as secure as wired networks, its vital that security settings are clearly understood and applied.



DO NOT ATTEMPT TO CONFIGURE OR CHANGE SECURITY SETTINGS FOR A NETWORK WITHOUT AUTHORIZATION AND WITHOUT CLEARLY UNDERSTANDING THE SETTINGS YOU ARE APPLYING. WITH POOR SECURITY SETTINGS, SENSITIVE DATA YOU SEND CAN BE SEEN BY OTHERS.

The list below shows the possible wireless security levels on your WPC-370A starting with the most secure. EAP (Extensible Authentication Protocol) is used for authentication and utilizes dynamic WEP key exchange. EAP requires interaction with a RADIUS (Remote Authentication Dial-In User Service) server either on the WAN or the LAN to provide authentication service for wireless stations.

1. Wi-Fi Protected Access (WPA)
2. IEEE802.1X EAP with RADIUS Server authentication
3. WEP Encryption
4. Unique ESSID

DATA ENCRYPTION WITH WEP

The WEP (Wired Equivalent Privacy) security protocol is an encryption method designed to try to make wireless networks as secure as wired networks. WEP encryption scrambles all data packets transmitted between the WPC-370A and the access point or other wireless stations to keep network communications private. Both the wireless stations and the access points must use the same WEP key for data encryption and decryption.

There are two ways to create WEP keys in your WPC-370A.

- Automatic WEP key generation based on a password phrase called a passphrase. The passphrase is case sensitive. You must use the same passphrase for all WLAN adapters with this feature in the same WLAN.
- For WLAN adapters without the passphrase feature, you can still take advantage of this feature by writing down the four automatically generated WEP keys from the **Security Settings** screen of the wireless utility and entering them manually as the WEP keys in the other WLAN adapter(s).

The WPC-370A allows you to configure up to four WEP keys and only one key is used as the default transmit key at any one time.

Chapter 3 - Hardware and Wireless Utility

This chapter introduces the Adapter and prepares you to use the Wireless Utility.

About Your 11n (Draft) Wireless PCI Adapter

With the Adapter, you can enjoy wireless mobility within almost any wireless networking environment.

The following lists the main features of your Card.

- ✓ Automatic rate selection.
- ✓ Data rate up to 300Mbps.
- ✓ Offers 64-bit, 128-bit WEP (Wired Equivalent Privacy) data encryption for network security.
- ✓ Supports IEEE802.1x and WPA (Wi-Fi Protected Access).
- ✓ Three external antennas.
- ✓ Driver support for Windows XP/2000.

Package Content

- 11n (Draft) Wireless PCI Adapter
- Three external antennas
- Installation and Manual CD
- Quick Start Guide

System Requirement

- Pentium class desktop computers with at least one available PCI slot
- Microsoft Windows XP or 2K
- CD-ROM drive

LED Definition

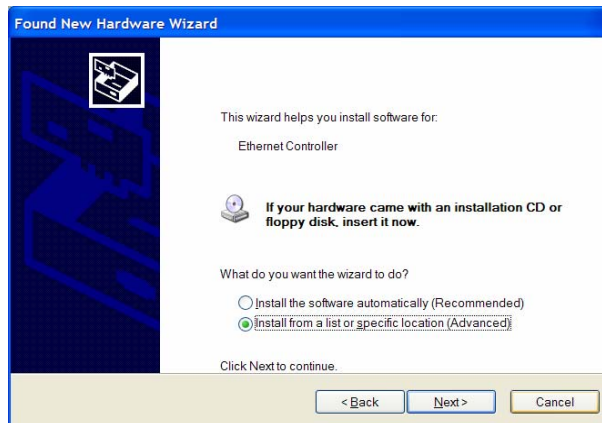
The following table describes the LEDs on the 11n (Draft) Wireless PCI Adapter

STATUS	POWER LED	LINK LED
<i>POWER OFF</i>	OFF	OFF
<i>POWER ON</i>	Slow Blinking	OFF
<i>Radio on without association</i>	Two LEDs slow blinking mutually	
<i>Associated without traffic</i>	Two LEDs slow blinking together	
<i>Associated with traffic</i>	Two LEDs blinking together per traffic amount	

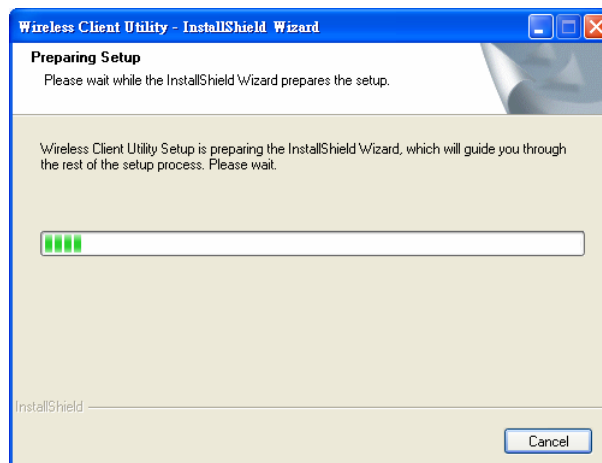
Hardware and Wireless Utility Installation

Follow the instructions below to install the PCI Card and Wireless Utility.

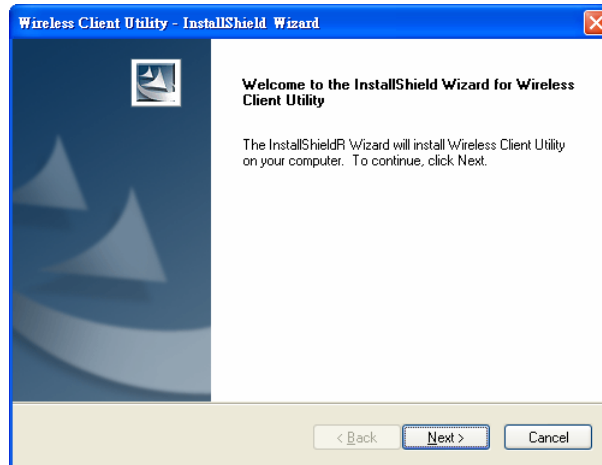
1. Turn off your computer, unplug the power cord and remove the computer's cover.
2. Pick a free PCI expansion slot and remove the protective bracket. Insert the Card into the slot until it is fully seated.
3. Secure the Card bracket with the screw from step 2. Replace the computer's cover.
4. Connect the external antenna to the Card from the SMA connector. And then, reconnect the power cord and power on the computer.
5. After power on, you will get the “**Found News Hardware Wizard**” menu; click on **Cancel**.



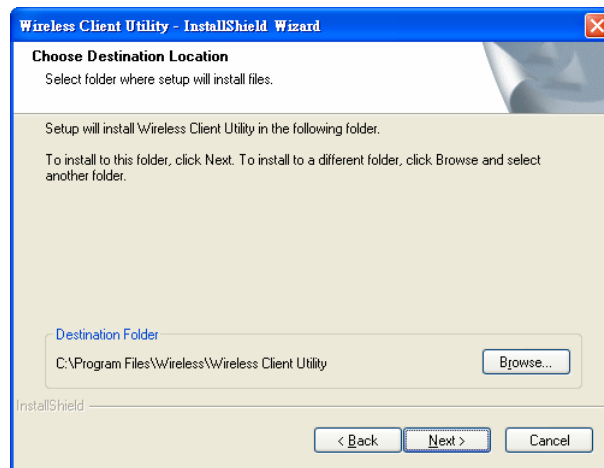
6. Insert the Driver and Utility CD into CD drive.
7. If your CD Autorun is enabled, the Main Installation Menu will show. (Otherwise open your CD folder and double-click on the “**setup.exe**” file)
8. The InstallShield Wizard prepares for installation.



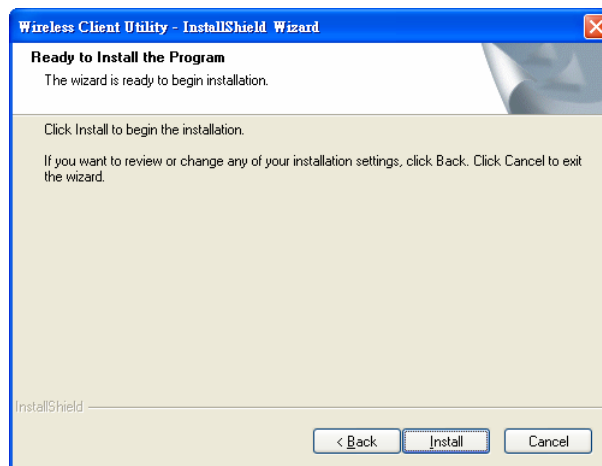
9. The InstallShield Wizard prompts you for confirmation. Click **Next** on the following menu.



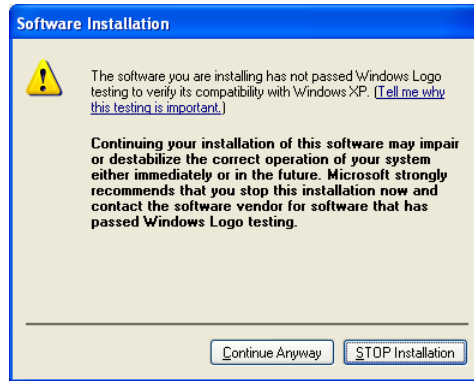
10. In the destination Folder screen you are asked to confirm the Destination Folder for the application software. If you would like, you may change the destination folder to another location. Click **Next**.



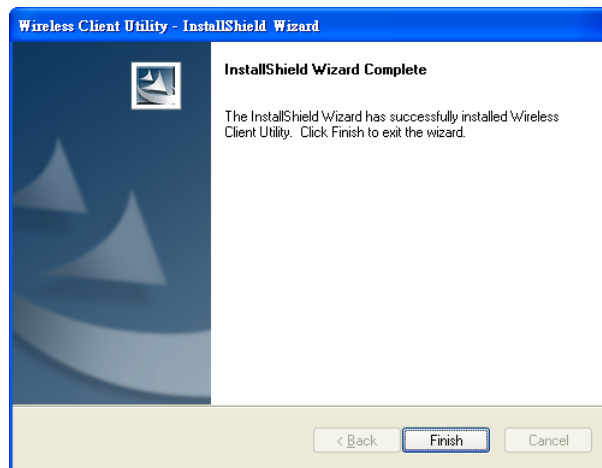
11. The wizard is ready to begin installation. Click **Install** on it.



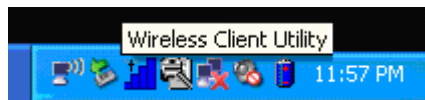
12. At the Software Installation menu click **Continue Anyway**.



13. Click **Finish** to complete the client utility installation. Please reboot your computer.



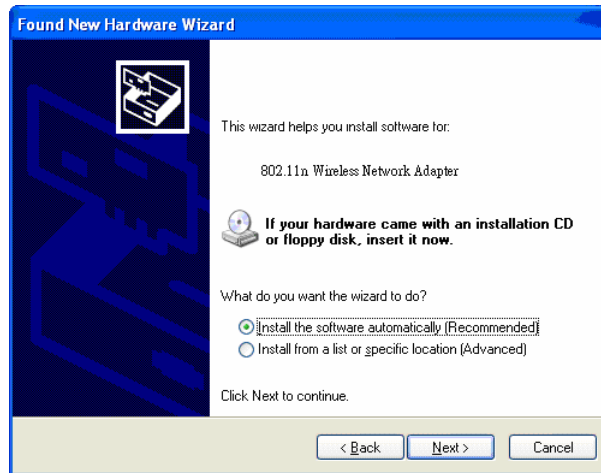
14. After rebooting, The Client Utility icon resides on the Desktop at the System Tray automatically.



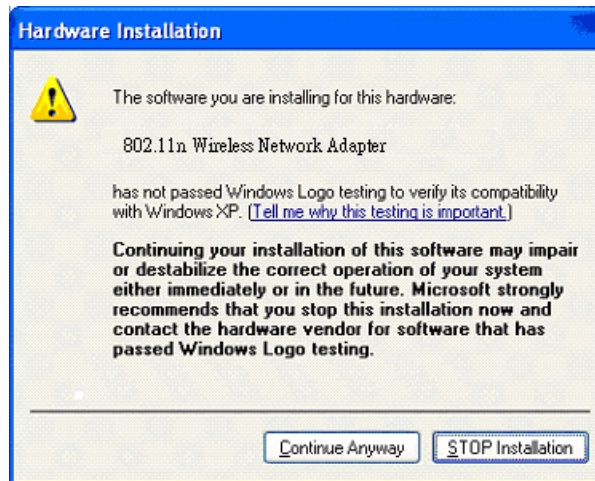
15. The OS detects the PCI Card after rebooting; the *Found New Hardware Wizard* window appears, click **Next** to continue.



16. Choose "Install the software automatically", and click **Next**.



17. At the hardware installation menu click **Continue Anyway**. (Our product has been tested under Windows XP and found to be fully compatible click **Continue Anyway**.)

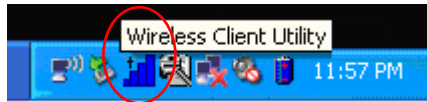


18. The Windows has finished installing driver for the device. Click **Finish** to finish the installation.



Using the Utility to Configure Your Network

The following are explanations on how to configure and use the Utility program. After completing the installation procedure, a new icon as shown below will automatically appear in the lower right tray bar.



Hold your mouse pointer over the icon, and double click the left mouse button to open the Wireless Client Utility.

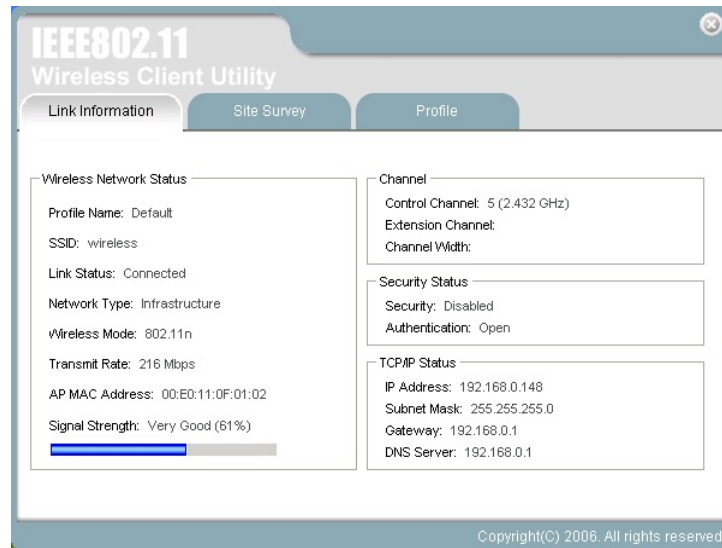
The Wireless Client Utility window as shown below will appear.



The user can now use any of the management functions available in the IEEE 802.11 Wireless Client Utility.

Link Information

Click the **Link Information** tab to see general information about the program and its operation.



The following table describes the items found on the Link Information screen.

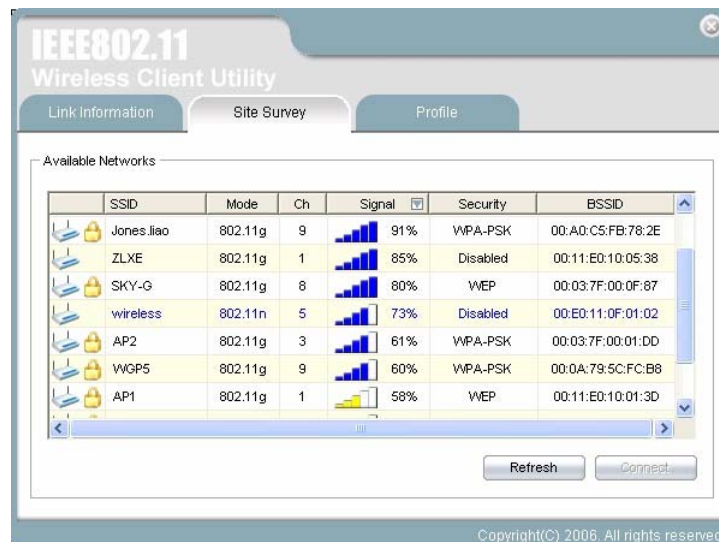
Wireless Network Status	
Profile Name	The name of the current selected configuration profile. Set up the configuration name on the Profile tab .
SSID	Displays the wireless network name.
Link Status	Shows whether the station is associated to the wireless network.
Network Type	The type of network the station is connected to. The options include: <ul style="list-style-type: none"> <input type="checkbox"/> Infrastructure (access point) <input type="checkbox"/> Ad Hoc
Wireless Mode	Displays the wireless mode. 802.11g, 11b or 11n
Transmit Rate	Displays the current transmit rate in Mbps.
AP MAC Address	Displays the MAC address of the access point the wireless card is associated to.
Signal Strength	Shows the strength of wireless signal.
Channel	
Control Channel	Channel number of the control 20MHz channel
Extension Channel	To locate the 40MHz channel on combination with the control channel

Channel Width	20MHz only or 40/20MHz channel support
Security Status	
Security	Shows the security type – Disable, WEP, WPA/WPA2, WAP-PSK/WAP2-PSK or 802.1X
Authentication	Displays the authentication mode.
TCP/IP Status	
IP Address	Displays the computer's IP address.
Subnet Mask	Displays subnet mask
Gateway	Displays gateway address
DNS Server	Display DNS server address

Site Survey

Click the **Site Survey** tab to see available infrastructure and ad hoc networks.

On this screen, click **Refresh** to refresh the list at any time.



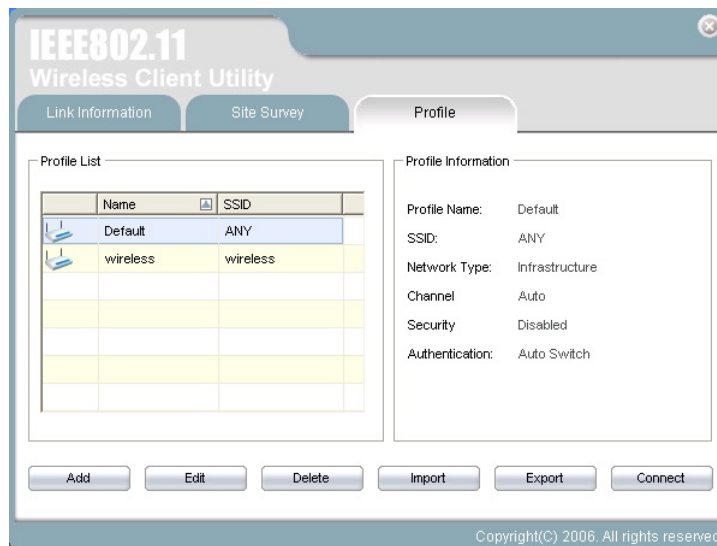
Connecting to a different network

Hold your mouse pointer over the network icon, and click the right mouse button to select the network.



Click the **Connect** button to connect the available network. If no configuration profile exists for that network, the Profile Settings window opens to ask to create a profile for the network. Follow the procedures to create profile for that network.

Profile

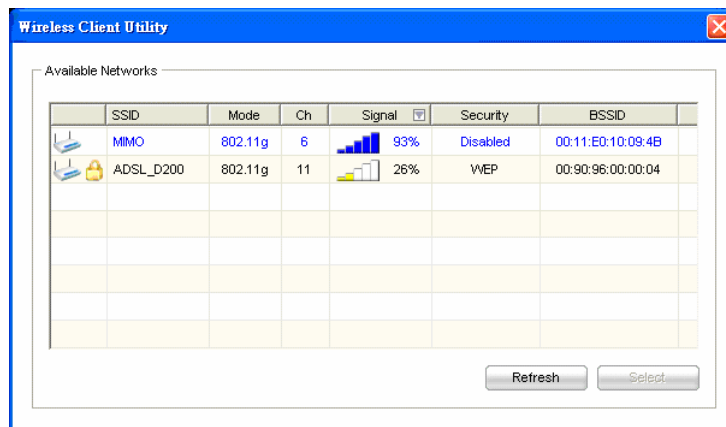


To add a new configuration profile, click **Add** on the Profile tab.
 To modify a configuration profile, select the configuration from the Profile list and click the **Edit** button.

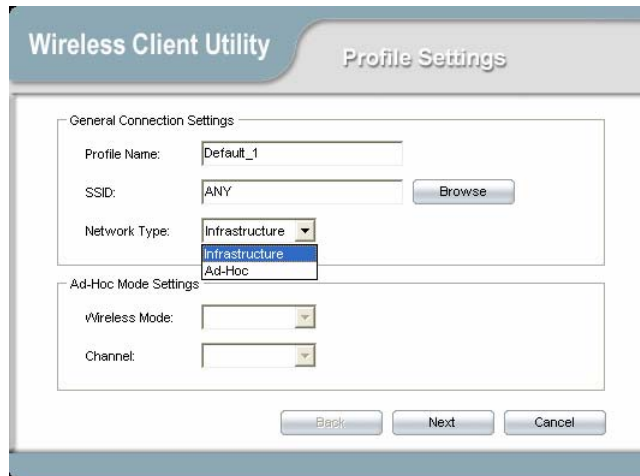


Scan Available Networks

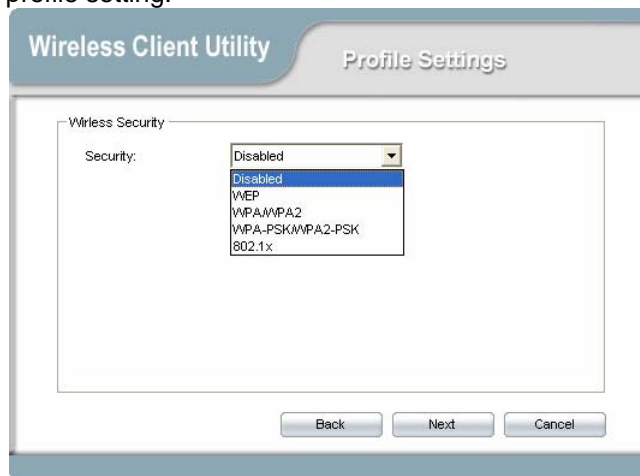
Click the **Browse** button on the Profile Settings screen to scan for available infrastructure and ad hoc networks. On this list, click **Refresh** to refresh the list at any time.



To configure a profile for Ad-Hoc or Infrastructure mode, select the Network Type field on the Profile Settings.



Click **Next** to continue the profile setting.



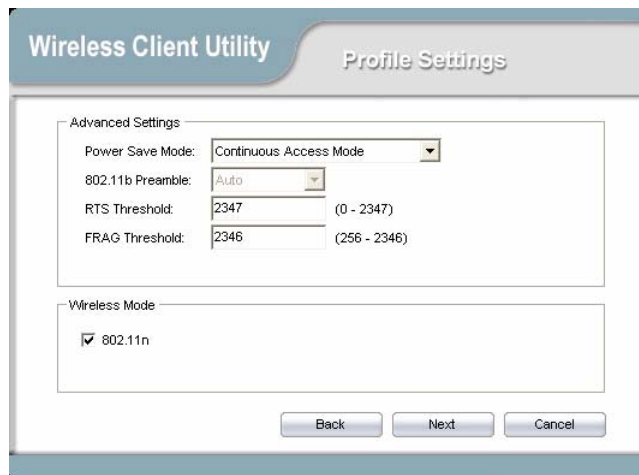
To define the security mode, select the security button of the desired security mode. And then click **Next** to continue. Please see following table for details of security modes.

<p>WEP</p>	<p>This card support three modes of WEP, include:</p> <ul style="list-style-type: none"> ■ 64 Bits ■ 128 Bits ■ 152 Bits <p>Except 152-Bit ode, both 64-Bit & 128-Bit modes support Passphrase.</p>
<p>WPA/WPA2</p>	<p>Enables the use of Wi-Fi Protected Access (WPA).</p> <p>Choosing WPA/WPA2 opens the WPA/WPA2 Security Settings screen. The options include:</p> <ul style="list-style-type: none"> ■ TLS (Transport Layer Security) is a Point-to-Point Protocol (PPP) extension supporting additional authentication methods within PPP. Transport Layer Security (TLS) provides for mutual authentication, integrity-protected cipher suite negotiation, and key exchange between two endpoints. ■ PEAP (EAP-GTC) (Protected Extensible Authentication Protocol) authenticates wireless LAN clients using only server-side digital certificates by creating an encrypted SSL/TLS

	<p>tunnel between the client and the <u>authentication server</u>. The tunnel then protects the subsequent user authentication exchange.</p> <ul style="list-style-type: none"> ■ PEAP (EAP-MSCHAP V2) (Protected Extensible Authentication Protocol) To use PEAP (EAP-MSCHAP V2) security, the server must have WPA-PEAP certificates, and the server properties must already be set. Check with the IT manager ■ TTLS (Tunneled Transport Layer Security) An <u>EAP</u> variant that provides mutual authentication using a certificate for server authentication, and via a secure <u>TLS</u> tunnel for the client ■ LEAP (Lightweight and Efficient Application Protocol) is the general framework for a set of high-performance, efficient protocols which are ideal for mobile and wireless applications. LEAP is designed to address all the technical requirements of the wireless data communications industry, and is oriented towards providing the greatest benefit to the industry and the consumer
WPA-PSK/WPA2-PSK	<p>Enables WPA/WPA2 Passphrase security. Fill in the WPA/WPA2 Passphrase on Security Settings screen.</p>
802.1x	<p>Enables 802.1x security. This option requires IT administration. Choosing 802.1x opens the 802.1x Security Settings screen. The options include:</p> <ul style="list-style-type: none"> ■ TLS ■ PEAP ■ TTLS ■ LEAP

Advanced Settings

After Security Settings finished, the **Advanced Settings** screen will be shown as following.



The following table describes the items found on the Advanced Settings screen.

Power Save Mode	Shows the power save mode. Power management is disabled in ad hoc mode. The options include: <ul style="list-style-type: none"> • Continuous Access Mode • Maximum Power Saving • Fast Power Saving
802.11b Preamble	Displays the 802.11b preamble format. The options include: <ul style="list-style-type: none"> • Long • Short • Auto
RTS Threshold	Value from 0 ~ 2347
FRAG Threshold	Value from 256 ~ 2346
Wireless Mode	Enable or disable 802.11n mode.

After advance settings are finished, the following screen showed as below. You can activate the profile now or later.



Chapter 4 - Maintenance

This chapter describes how to uninstall or upgrade the Wireless Utility.

Uninstall the Driver

Follow the steps below to remove (or uninstall) the Card driver from your computer.

- Step 1.** To remove the driver from the OS, go to **Start -> Control Panel**
- Step 2.** Double-click **System**
- Step 3.** Under **Hardware** tab, click **Device Manager**.
- Step 4.** Double-click **Network Card**
- Step 5.** Right-click mouse button on “**802.11n Wireless Network Adapter**”, and choose **Uninstall**
- Step 6.** Click **OK** to confirm that you are going to uninstall the driver

Uninstall the Client Utility

Follow the steps below to remove the Client Utility from your computer.

- Step 1.** To remove the utility from the OS, go to **Start -> Control Panel**
- Step 2.** Double-click **Add-Remove Programs**
- Step 3.** Select **802.11n Wireless Network Adapter**, and click the **Uninstall** button

Upgrading the Wireless Utility

To perform the upgrade, follow the steps below.

- Step 1.** Download the latest version of the utility from the web site and save the file on your computer.
- Step 2.** Follow the steps in *Section 3.2* to remove the current Wireless Utility from your computer.
- Step 3.** Restart your computer if prompted.
- Step 4.** After restarting, refer to the procedure in the Chapter 2 to install the new utility.

Glossary

For unfamiliar terms used below, look for entries elsewhere in the glossary.

AD-HOC (IBSS)

Ad-hoc mode does not require an AP or a wired network. A network that transmits wireless from computer to computer without the use of a base station (access point).

Two or more wireless stations communicate directly to each other. An ad-hoc network may sometimes be referred to as an Independent Basic Service Set (IBSS).

CHANNEL

A radio frequency used by a wireless device is called a channel.

EAP AUTHENTICATION

EAP (Extensible Authentication Protocol) is an authentication protocol that runs on top of the IEEE802.1X transport mechanism in order to support multiple types of user authentication. By using EAP to interact with an EAP-compatible RADIUS server, an access point helps a wireless station and a RADIUS server perform authentication.

ENCRYPTION

The reversible transformation of data from the original to a difficult-to-interpret format. Encryption is a mechanism for protecting confidentiality, integrity, and authenticity of data. It uses an encryption algorithm and one or more encryption keys.

FRAGMENTATION THRESHOLD

This is the maximum data fragment size that can be sent before the packet is fragmented into smaller packets.

IEEE 802.1X

The IEEE 802.1X standard outlines enhanced security methods for both the authentication of wireless stations and encryption key management. Authentication can be done using an external RADIUS server.

INFRASTRUCTURE (BSS)

When a number of wireless stations are connected using a single AP, you have a Basic Service Set (BSS).

ROAMING

In an infrastructure network, wireless stations are able to switch from one BSS to another as they move between the coverage areas. During this period, the wireless stations maintain uninterrupted connection to the network. This is roaming. As the wireless station moves from place to place, it is responsible for choosing the most appropriate AP depending on the signal strength, network utilization among other factors.

SSID

The SSID (Service Set Identity) is a unique name shared among all wireless devices in a wireless network. Wireless devices must have the same SSID to communicate with each other.

TEMPORAL KEY INTEGRITY PROTOCOL (TKIP)

Temporal Key Integrity Protocol (TKIP) uses 128-bit keys that are dynamically generated and distributed by the authentication server.

USER AUTHENTICATION

WPA applies IEEE 802.1X and Extensible Authentication Protocol (EAP) to authenticate wireless clients using an external RADIUS database. If you do not have an external RADIUS server, use WPA-PSK/WPA2-PSK (WPA -Pre-Shared Key) that only requires a single (identical) password entered into each access point, wireless gateway and wireless client. As long as the passwords match, clients will be granted access to a WLAN.

WEP

WEP (Wired Equivalent Privacy) encryption scrambles all data packets transmitted between the WPC-370A and the AP or other wireless stations to keep network communications private. Both the wireless stations and the access points must use the same WEP key for data encryption and decryption.

WPA/WPA2

Wi-Fi Protected Access (WPA) and WPA2 is a subset of the IEEE 802.11i security specification draft. Key differences between WPA and WEP are user authentication and improved data encryption. WPA2 is a wireless security standard that defines stronger encryption, authentication and key management than WPA

