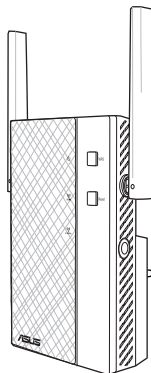




RP-AC56

Wireless-AC1200 Range Extender



Quick Start Guide

English.....	3
French.....	.XX
Brazilian.....	.XX
PortugueseXX
Spanish.....	.XX

Package contents

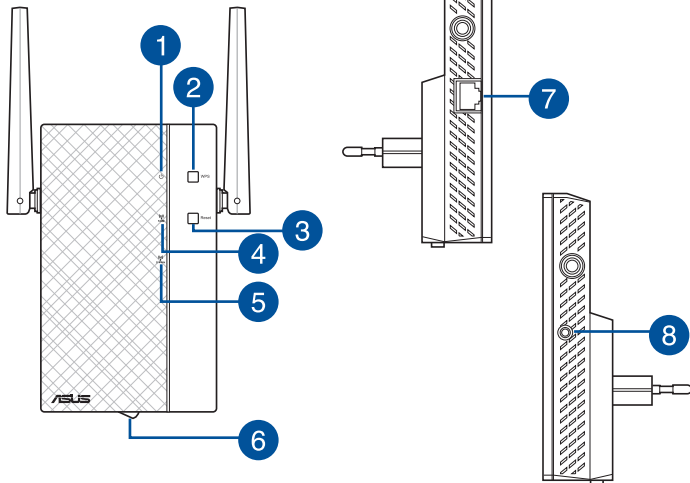
- ✓ RP-AC56 Range Extender
- ✓ Warranty Card

- ✓ Quick Start Guide

NOTE: If any of the items is damaged or missing, please contact your retailer.

A quick look

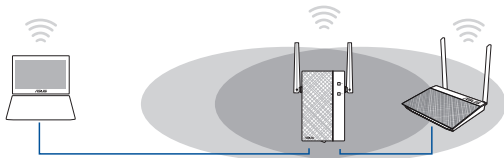
- 1) Power LED
On: RP-AC56 is on.
Off: RP-AC56 is off.
- 2) WPS button
- 3) Reset button
- 4) 5GHz LED
- 5) 2.4GHz LED
- 6) Power On/Off switch
- 7) Gigabit RJ-45 port
- 8) 3.5 mm audio jack



Setting up the Range Extender

Turning the Range Extender on

1. Place RP-AC56 near your Router/AP.
2. Plug RP-AC56 to a power outlet, wait for one (1) minute until the Power LED becomes solid green.



Connecting to a network

Select one of the following ways to connect the Range Extender to a network.

Option A: Connecting through GUI

1. Use a Wi-Fi enabled device, such as your desktop PC/notebook/tablet, to find and connect to **ASUS_RPAC56 /ASUS_RPAC56_5G** wireless network.
2. Launch a web browser and enter <http://repeater.asus.com> in the address bar to access the Range Extender.
3. Enter the default login name and password, which are admin/admin.
4. Follow the **Quick Internet Setup** steps below to set up the Range Extender:

- Connect to a Wi-Fi network and when prompted, enter the security key. If your Wi-Fi network is hidden, click **Manual setting**.
- You can either tick "**Use default setting**" or enter the SSID and security key/password for your extended network. When done, click **Next**.

NOTE: The Range Extender's wireless network name (SSID) changes to your existing Wi-Fi network name, ending with **_RPT** or **_RPT5G** and shares your router/AP's Wireless Password.

- Connect your wireless devices to the new Extender network.

Option B: Using WPS (Wi-Fi Protected Setup)

1. Press the WPS button on the router/AP.
2. Press the WPS button on the top of the RP-AC56 for more than two (2) seconds, until the Power LED starts to blink.

NOTE: Refer to the router's manual for the location of the WPS button.



3. Check if RP-AC56's Wi-Fi indicator turns solid light, which indicates that the Range Extender has connected to the wireless network successfully. The Range Extender's wireless network name (SSID) changes to your existing Wi-Fi network name, ending with **_RPT** or **_RPT5G**. For example:

Existing Wi-Fi network name: **existing NetworkName**

New Extender 2.4GHz network name: **existing NetworkName_RPT**

New Extender 5GHz network name: **existing NetworkName_RPT5G**

To connect an additional Wi-Fi device to your Extender network, use the same network password as that of your existing wireless router.

Move the Range Extender

When the connection is complete, locate the Range Extender between the router/AP and the wireless device to get better performance. After placing your RP-AC56 in an ideal location, RP-AC56 connects to your router/AP in about one (1) minute.

NOTES:

- Place your RP-AC56 between your router/AP and wireless device to get the best extender performance.
- Place your RP-AC56 in a location where you can get green Wi-Fi LED.

IMPORTANT!

- To minimize interference, keep RP-AC56 away from devices like cordless phones, Bluetooth devices and microwave ovens.
- We recommend that you place your RP-AC56 in open or spacious location.



Signal Indicator

- To get the best performance, place the Range Extender between your router/AP and wireless device.
- The Wi-Fi signal indicator indicates the connection performance from the Range Extender to the router/AP. Refer to the Wi-Fi LED indicator in section **A Quick Look**.

Wireless Media Playback

The Range Extender supports wireless media playback, which allows you to stream and play your network music through its audio port. You can use ASUS AiPlayer app to control the music streaming over the Range Extender from your mobile device. Search for "RP-AC56" or "AiPlayer" from Google Play or App Store and download the app to your mobile device.

NOTE: You can insert an earphone, powered speaker, or stereo system to the 3.5mm stereo audio port.



Frequently Asked Questions

Q1: What should I do if my router does not support WPS?

- You can use Option A to set up RP-AC56.

Q2: Why is that the Wi-Fi LED does not light up after completing Method Two?

- You may have entered the wrong router SSID and password. Reset your RP-AC56, double check your router SSID/password, and set up RP-AC56 again.

Q3: Why is it that I cannot see the login page after entering <http://repeater.asus.com> in the browser?

- Ensure that your computer is connected to the extender network only, and set your computer to **Obtain an IP address automatically**.

Q4: My router security is WEP, and I entered a wrong passphrase or security key on the extender. Now I cannot access the Extender any more. What can I do?

- The Range Extender cannot check whether the WEP passphrase is correct or not. When entered a wrong passphrase, your wireless device cannot get the correct IP address from the Range Extender. Please reset the Range Extender to its factory defaults to get the IP address back.

Q5: How do I reset RP-AC56?

- Press the RESET button on the top of RP-AC56 for about two (2) seconds. Wait for about five (5) seconds until the LEDs blink slowly.

Q6: Why doesn't the 5GHz signal indicator of the Range Extender light up?

- Check whether your router supports 5GHz band. If your router is single band, the Range Extender's 5GHz Signal Indicator will not light up and it works at 2.4GHz band only.

Q7: When I connect a speaker or stereo system to RP-AC56, there is no sound coming out when I play audio files.

- Make sure that you have not turned off the audio output via the touch controller. The touch controller is set to turn on/off the night light and mute/unmute the audio by default. You can log into the Range Extender's Web GUI to change the settings.

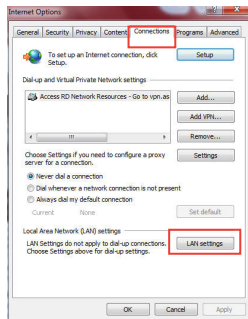
Q8: I cannot access the web GUI to configure the RP-AC56 settings.

- Close all running web browsers and launch again.
- Follow the steps below to configure your computer settings based on its operating system.

Windows 7

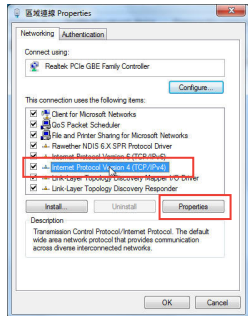
A. Disable the proxy server, if enabled.

1. Click **Start > Internet Explorer** to launch the web browser.
2. Click **Tools > Internet options > Connections** tab > **LAN settings**.
3. From the Local Area Network (LAN) Settings screen, uncheck **Use a proxy server for your LAN**.
4. Click **OK** when done.



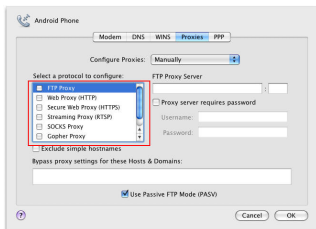
B. Set the TCP/IP settings to automatically obtain an IP address.


1. Click **Start > Control Panel > Network and Internet > Network and Sharing Center > Manage network connections**.
2. Select **Internet Protocol Version 4 (TCP/IPv4)**, then click **Properties**.
3. Tick **Obtain an IP address automatically**.
4. Click **OK** when done.

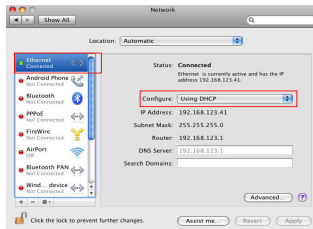


Mac 10.5.8**A. Disable the proxy server, if enabled.**

1. From the menu bar, click **Safari > Preferences... > Advanced** tab.
2. Click **Change Settings...** in the **Proxies** field.
3. From the list of protocols, deselect **FTP Proxy and Web Proxy (HTTP)**.
4. Click **OK** when done.

**B. Set the TCP/IP settings to automatically obtain an IP address.**

1. Click the Apple icon  > **System Preferences > Network**.
2. Select **Ethernet** and select **Using DHCP** in the **Configure** field.
3. Click **Apply** when done.



Manufacturer	ASUSTek Computer Inc. Tel: +886-2-2894-3447 Address: No. 150, LI-TE RD., PEITOU, TAIPEI 112, TAIWAN		
Authorised representative in Europe	ASUS Computer GmbH Address: HARKORT STR. 21-23, 40880 RATINGEN, GERMANY		
Authorised distributors in Turkey	BOGAZICI BİL GİSAYAR SAN. VE TİC. A.Ş. Tel: +90 212 3311000 Address: AYAZAGA MAH. KEMERBURGAZ CAD. NO.10 AYAZAGA/İSTANBUL	CİZGİ Elektronik San. Tic. Ltd. Şti. Tel: +90 212 3567070 Address: CEMAL SURURI CD. HALİM MERIC İS MERKEZİ No: 15/C D:5-6 34394 MECİDİYEKOY/İSTANBUL	KOYUNCU ELEKTRONİK BİLGİ İŞLEM SİST. SAN. VE DİŞ TİC. A.Ş. Tel: +90 216 5288888 Address: EMEK MAH.ORDU CAD. NO:18, SARİGAZİ, SANCAKTEPE İSTANBUL

FCC Notices

This device complies with Part 15 of the FCC Rules. Operation is subject to the following two conditions: (1) this device may not cause harmful interference, and (2) this device must accept any interference received, including interference that may cause undesired operation.

CAUTION: Change or modification not expressly approved by the party responsible for compliance could void the user's authority to operate this equipment.

This equipment has been tested and found to comply with the limits for a Class B digital device, pursuant to Part 15 of the FCC Rules. These limits are designed to provide reasonable protection against harmful interference in a residential installation. This equipment generates, uses and can radiate radio frequency energy and, if not installed and used in accordance with the instructions, may cause harmful interference to radio communications. However, there is no guarantee that interference will not occur in a particular installation. If this equipment does cause harmful interference to radio or television reception, which can be determined by turning the equipment off and on, the user is encouraged to try to correct the interference by one or more of the following measures:

- Reorient or relocate the receiving antenna.
- Increase the separation between the equipment and receiver.
- Connect the equipment into an outlet on a circuit different from that to which the receiver is connected.
- Consult the dealer or an experienced radio/TV technician for help.

CAUTION:

Any changes or modifications not expressly approved by the grantee of this device could void the user's authority to operate the equipment.

RF exposure warning:

The equipment complies with FCC RF exposure limits set forth for an uncontrolled environment. The equipment must not be co-located or operating in conjunction with any other antenna or transmitter.

This equipment also should be installed and operated with minimum distance 20cm between the radiator & your body.