

Install Guide

You can download the User Guide from www.tendacn.com for more featured settings of the router.

Model: AC9

Package Contents

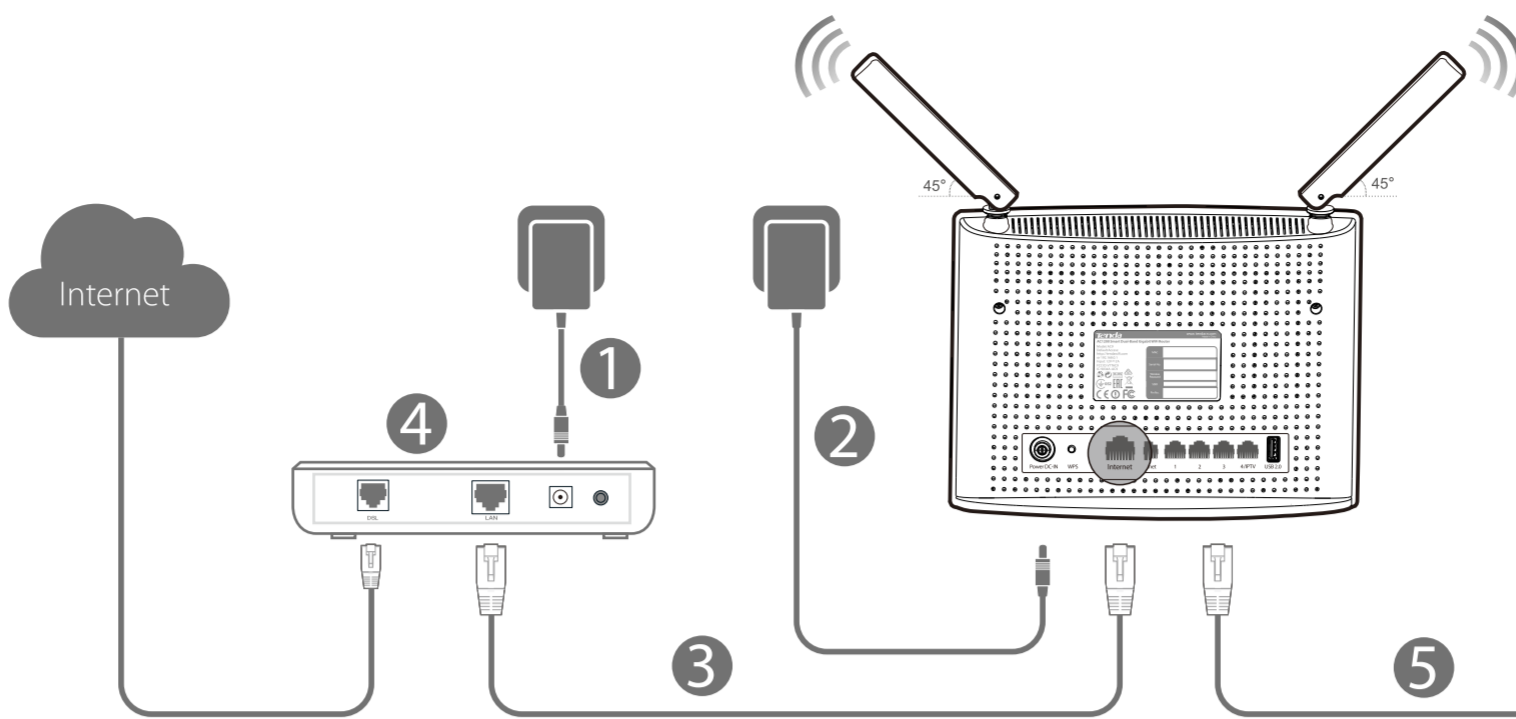
- Wireless Router * 1
- Removable Stand * 1
- Power Adapter * 1
- Ethernet Cable * 1
- Install Guide * 1



Scan to download Tenda App. Available on the Apple App Store and Google Play Store.

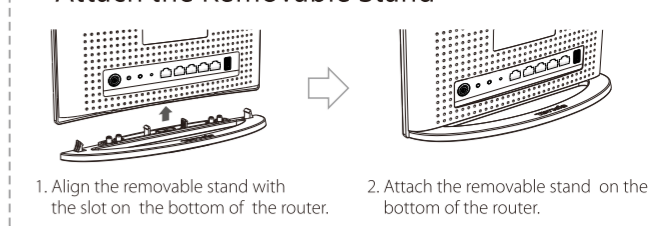
If any item is incorrect, missing or damaged, please keep the original package and contact the vendor for replacement immediately.

1 Connect Your Router

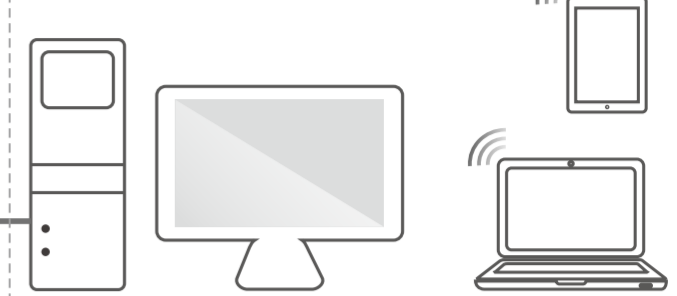


- Step 1** Unplug your modem's power. If it has a battery backup, remove the battery.
- Step 2** Power on the router.
- Step 3** Connect the modem to the Internet port of your router using an Ethernet cable.
- Step 4** Plug in your modem or put the battery back in.
- Step 5** Connect your computer to the router wirelessly, or via an Ethernet cable.

* Attach the Removable Stand



Please refer to the label on the back panel for the default SSID and password.



* Images herein are for reference only. Please refer to the actual product.

2 Access the Internet

Step 1 Open a web browser, type **tendawifi.com** or **192.168.0.1** in the address bar and press **Enter** on the keyboard.

Tips: If the Quick Setup Wizard page doesn't appear after step 1 above, please refer to the solutions in FAQ > Q1.



Step 2 Follow the onscreen instructions in Quick Setup Wizard to complete the Internet settings. Take PPPoE as an example here.

- Click Start.
- The router will detect your connection type automatically. Select your connection type according to the detection result, and type the required info. Then click **Next**.
- Customize your WiFi name, WiFi password, and login password, and click **Next**.
- Connecting...please wait...
- When the login page appears, you have completed the Internet settings. You can enjoy your Internet now.

Tips

- If you customize either a new WiFi name or a new password in **step c**, you need to connect to the router's WiFi again after **step d**.
- Note that the WiFi password is used to connect to your wireless network (WiFi) while the login password is for logging in to the Router's User Interface.

Wired:

Connect your computer to the router using the included Ethernet cable

Wireless:

To connect with WiFi, use the WiFi name and password on the product label which is on the router's front panel.

Either WiFi (SSID) or WiFi password is changed, devices are required to connect with WiFi manually once again.

Tips

- If you access the Internet via an Ethernet cable without a modem, follow the steps below:
 - Insert the power adapter to your router's Power port, and plug the other end to a power outlet.
 - Insert the Ethernet cable into the router's Internet port directly.
 - Connect your computer to the router wirelessly, or via an Ethernet cable.
- Your new router has two wireless networks, one for 2.4GHz and one for 5GHz, and the preset info is shown on the router's front panel.

Appendix 1 Join Your WiFi

iPhone/iPad

- Scroll screen to find the **Settings** icon. Click the icon.
- Click **Wi-Fi**. Click to open Wi-Fi. Find the name of the Wireless network you wish to connect. Click on it.
- Enter a security key. Click **Join** to join the Wireless network.
- Connected successfully

Windows 8

- Click the icon on the bottom right corner of your desktop
- Select your Wireless network from the list, click **Connect** and then follow onscreen instructions.
- Connected successfully!

LED Indicator	Status	Description
SYS	Solid	The power is ON.
	Blinking	The system is working fine.
	Off	Power Off
LAN 4/3/2/1	Solid	The LAN port is well-connected.
	Blinking	Data is being transmitted via the LAN port.
	Off	No connection is detected on the LAN port.
Internet	Solid	The Internet port is well-connected.
	Blinking	Data is being transmitted via the Internet port.
	Off	No Ethernet cable is detected.
2.4GHz	Solid	2.4GHz WiFi is enabled.
	Blinking	The Router is sending or receiving 2.4GHz WiFi data.
	Off	2.4GHz WiFi is disabled.
5GHz	Solid	5GHz WiFi is enabled.
	Blinking	The Router is sending or receiving 5GHz WiFi data.
	Off	5GHz WiFi is disabled.
WPS	Solid	WPS is enabled.
	Blinking	The Router is performing WPS negotiation to a client device.
	Off	WPS is disabled.
USB	Solid	A USB device is well-connected and ready.
	Blinking	Data is being transmitted.
	Off	No USB device is detected, or USB device is ejected safely.

Button/Interface	Description
Power DC-IN	This interface is used to connect to the included power adapter of the router for power supply.
WPS	Press and hold it for a second and then release it to enable the WPS feature; please enable the wireless device's WPS feature to establish WPS connection within 2 minutes.
WiFi	Press and then release it to enable/disable WiFi.
Reset	Use the end of a paper clip or a similar object to press and hold this button for about 8 seconds until all the LEDs light up once and then release it to restore factory settings.
Internet	This port is used to connect to the Internet via an Ethernet cable.
1/2/3	These ports are used to connect to network devices, such as computers, etc.
4/IPTV	This port is used for IPTV only when IPTV feature is enabled; otherwise, it serves as a LAN port.
USB2.0	This interface can be used to connect to a USB storage drive, USB printer and etc.

Tips

- If you have a USB printer, you can download a control software for USB printer from http://down.tendacn.com/uploadfile/2015/AC9/AC9_printer_driver.rar
- DO NOT remove the USB drive when it is working to avoid data loss or other damages.
- It is not advisable to connect two or more external hard drives concurrently to the router's USB2.0 port with the help of a USB hub to avoid possible damages to the router.
- It is not advisable to charge your mobile phone via the router's USB2.0 port.

FAQs

Q1: I cannot log in to the wireless router's User Interface. What should I do?

- Verify that your computer is connected to the router properly.
- Verify that "tendawifi.com" or "192.168.0.1" is correctly entered in the address bar of a web browser.
- If your computer is set to a static IP address, change the settings to obtain an IP address automatically.
- Clear cache of your browser, or launch another web browser.
- Press and hold the Reset button for about 8 seconds, and then release it to restore the router to factory settings; then try to login again.

Q2: I forget my WiFi password, what should I do?

- If you have not changed the default Wireless Password, you could find it on the router's front or rear panel.
- Press and hold the Reset button for about 8 seconds and then release it to default the router, and then reset the WiFi password.



FCC Statement

This device is restricted to be used in the indoor. This device complies with Part 15 of the FCC Rules. Operation is subject to the following two conditions: (1) This device may not cause harmful interference, and (2) this device must accept any interference received, including interference that may cause undesired operation. This equipment has been tested and found to comply with the limits for a Class B digital device, pursuant to Part 15 of the FCC Rules. These limits are designed to provide reasonable protection against harmful interference in a residential installation. This equipment generates, uses and can radiate radio frequency energy and, if not installed and used in accordance with the instructions, may cause harmful interference to radio communications. However, there is no guarantee that interference will not occur in a particular installation. If this equipment does cause harmful interference to radio or television reception, which can be determined by turning the equipment off and on, the user is encouraged to try to correct the interference by one of the following measures:

- Reorient or relocate the receiving antenna.
- Increase the separation between the equipment and receiver.
- Connect the equipment into an outlet on a circuit different from that to which the receiver is connected.
- Consult the dealer or an experienced radio/TV technician for help.

FCC Caution: Any changes or modifications not expressly approved by the party responsible for compliance could void the user's authority to operate this equipment. This transmitter must not be co-located or operating in conjunction with any other antenna or transmitter.

Radiation Exposure Statement

This device complies with FCC radiation exposure limits set forth for an uncontrolled environment and it also complies with Part 15 of the FCC RF Rules. This equipment complies with FCC radiation exposure limits set forth for an uncontrolled environment. This device should be installed and operated with minimum distance 20cm between the radiator & your body. **NOTE:** (1) The manufacturer is not responsible for any radio or TV interference caused by unauthorized modifications to this equipment. (2) To avoid unnecessary radiation interference, it is recommended to use a shielded RJ45 cable.



CE Mark Warning

Hereby, Shenzhen Tenda Technology Co., Ltd declares that AC1200 Smart Dual-Band Gigabit WiFi Router is in compliance with the essential requirements and other relevant provisions of Directive 1995/5/EC. Declaration of Conformity will be at www.tendacn.com/. This equipment may be operated in: AT, BE, BG, CY, CZ, DK, EE, FI, FR, DE, GR, HU, IS, IE, IT, LV, LI, LT, LU, MT, NL, NO, PL, PT, RO, SK, SI, ES, SE, CH, TR, GB. Operations in the 5.15-5.25GHz band are restricted to indoor usage only. This is a Class B product. In a domestic environment, this product may cause radio interference, in which case the user may be required to take adequate measures.

NOTE: (1) The manufacturer is not responsible for any radio or TV interference caused by unauthorized modifications to this equipment. (2) To avoid unnecessary radiation interference, it is recommended to use a shielded RJ45 cable

IC RSS warning

Industry Canada (RSS-Gen Issue 4)

The device for operation in the band 5150-5250 MHz is only for indoor use to reduce the potential for harmful interference to co-channel mobile satellite systems les dispositifs fonctionnant dans la bande 5150-5250 MHz sont réservés uniquement pour une utilisation à l'intérieur afin de réduire les risques de brouillage préjudiciable aux systèmes de satellites mobiles utilisant les mêmes canaux This device complies with Industry Canada's licence-exempt RSSs. Operation is subject to the following two conditions: (1) This device may not cause interference; and (2) This device must accept any interference, including interference that may cause undesired operation of the device.

Le présent appareil est conforme aux CNR d'Industrie Canada applicables aux appareils radio exempts de licence. L'exploitation est autorisée aux deux conditions suivantes: (1) l'appareil ne doit pas produire de brouillage; (2) l'utilisateur de l'appareil doit accepter tout brouillage radioélectrique subi, même si le brouillage est susceptible d'en compromettre le fonctionnement.

IC Radiation Exposure Statement:

This transmitter must not be co-located or operating in conjunction with any other antenna or transmitter. This equipment should be installed and operated with a minimum distance of 20 centimeters between the radiator and your body. Cet émetteur ne doit pas être Co-placé ou ne fonctionner en même temps qu'aucune autre antenne ou émetteur. Cet équipement devrait être installé et actionné avec une distance minimum de 20 centimètres entre le radiateur et votre corps. The device meets the exemption from the routine evaluation limits in section 2.5 of RSS 102 and compliance with RSS-102 RF exposure, users can obtain Canadian information on RF exposure and compliance. Le dispositif rencontre l'exemption des limites courantes d'évaluation dans la section 2.5 de RSS 102 et la conformité à l'exposition de RSS-102 rf, utilisateurs peut obtenir l'information canadienne sur l'exposition et la conformité de rf.

Shenzhen Tenda Technology Co., Ltd.

6-8 Floor, Tower E3, NO.1001, Zhongshanyuan Road, Nanshan District, Shenzhen, China, 518052
 Global Hotline: (86) 755-27657180 United States Hotline: 1-800-570-5892
 HongKong Hotline: 00852-81931998 Canada Hotline: 1-888-998-8966
 Skype: Tendazs E-mail: support@tenda.com.cn
 Website: <http://www.tendacn.com>

© 2016 Shenzhen Tenda Technology Co., Ltd. All rights reserved. Tenda is a registered trademark legally held by Shenzhen Tenda Technology Co., Ltd. Other brand and product names mentioned herein are trademarks or registered trademarks of their respective holders. Specifications are subject to change without notice.

