



TP-LINK®

User Guide

TD-8841 External ADSL2+ ROUTER



COPYRIGHT & TRADEMARKS

Specifications are subject to change without notice. **TP-LINK**® is a registered trademark of TP-LINK TECHNOLOGIES CO., LTD. Other brands and product names are trademarks or registered trademarks of their respective holders.

No part of the specifications may be reproduced in any form or by any means or used to make any derivative such as translation, transformation, or adaptation without permission from TP-LINK TECHNOLOGIES CO., LTD. Copyright © 2007 TP-LINK TECHNOLOGIES CO., LTD. All rights reserved.

FCC STATEMENT



This equipment has been tested and found to comply with the limits for a Class B digital device, pursuant to part 15 of the FCC Rules. These limits are designed to provide reasonable protection against harmful interference in a residential installation. This equipment generates, uses and can radiate radio frequency energy and, if not installed and used in accordance with the instructions, may cause harmful interference to radio communications. However, there is no guarantee that interference will not occur in a particular installation. If this equipment does cause harmful interference to radio or television reception, which can be determined by turning the equipment off and on, the user is encouraged to try to correct the interference by one or more of the following measures:

- Reorient or relocate the receiving antenna.
- Increase the separation between the equipment and receiver.
- Connect the equipment into an outlet on a circuit different from that to which the receiver is connected.
- Consult the dealer or an experienced radio/ TV technician for help.

This device complies with part 15 of the FCC Rules. Operation is subject to the following two conditions:

- 1) This device may not cause harmful interference.

This device must accept any interference received, including interference that may cause undesired operation.

CE Mark Warning



This is a class B product. In a domestic environment, this product may cause radio interference, in which case the user may be required to take adequate measures.

SAFETY NOTICES

Caution: Do not use this product near water, for example, in a wet basement or near a swimming pool.

Avoid using this product during an electrical storm. There may be a remote risk of electric shock from lightning.

COMMENT

Package contents	1
Chapter 1. Product Overview	2
1.1 Product main specification	2
1.2 Supporting protocol	2
1.3 Transmit data-rate	3
1.4 ATM property	3
1.5 System support	3
1.6 Working environment	3
1.7 Electric parameter	4
Chapter 2. Hardware Installation Guide	5
2.1 System requirement	5
2.2 LED explanation	5
2.3 Rear-panel	5
2.4 Hardware installation procedures.....	6
Chapter 3. System Configuration	7
3.1 Computer Configuration	7
3.2 Login	8
3.3 Web Setup	9
3.4 Software Dial	19
3.5 USB Configuration	21
Chapter 4. Advantage management setup	27
Chapter 5. FQA	28
Appendix A: Default Configuration	30
Appendix B: Configuring the PCs	31
Appendix C: Contact Information	35

Package contents

The following contents should be found in your box:

- One TD-8841 External ADSL2+ ROUTER
- One AC power Adapter for TD-8841 External ADSL2+ ROUTER
- One Resource CD for TD-8841 External ADSL2+ ROUTER, including:
 - This Guide
 - Quick installation Guide Program
 - Other Helpful Information
 - USB driver
- Quick installation Guide
- One RJ45 cable
- Two RJ11 cable
- One ADSL splitter
- One USB cable

 **Note:**

If any of the above items are damaged or missing, please contact the retailer from whom you purchased the TD-8841 External ADSL2+ ROUTER for assistance.

Chapter 1. Product Overview

TP-LINK® TD-8841 External ADSL2+ ROUTER is the latest product designed and manufactured by TP-LINK Technologies Co., Ltd. With TP-LINK's excellent circuit design and high quality production, we guarantee the ADSL2+ ROUTER's high performance, great stability and easy to use.

In addition to the basic DMT physical layer functions, the ADSL2+ PHY supports dual latency ADSL2+ framing (fast and interleaved) and the I.432 ATM Physical Layer.

The TD-8841 is a complete plug-and-play solution. With standard Ethernet interface, it can be directly connected to any 10M/100M Ethernet devices, support Auto-MDIX.

The TD-8841 not only uses html (web mode through Ethernet port) to configure the ROUTER but also uses external utility software. You can download it from our website (<http://www.tp-link.com>).

1.1 Product main specification

- High speed and asymmetrical data transmit mode, provides safe and exclusive bandwidth
- Supports All ADSL2+ industrial standards
- Compatible with all mainstream DSLAM (CO)
- Firmware upgradeable
- Provides integrated access of internet and route function which face to SOHO user
- Advanced DMT modulation and demodulation
- Real-time Configuration and device monitoring
- Quick response semi-conductive surge protection circuit, provides reliable ESD and surge-protect function

1.2 Supporting protocol

- G.992.1 (G.dmt) - Annex A/B/C
- G.992.2 (G.lite) - Annex A/B/C
- ANSI T1.413
- G.992.3 (ADSL2) Annex A/B/C/M and Annex L (RE-DSL) compliant
- G.992.5 (ADSL2+) Annex A/B/C and Annex L (RE-DSL) compliant
- ADSL dual latency (fast path and interleaved path)
- I.432 ATM physical layer compliant

- Supports RFC2364 (PPPoA)
- Supports RFC2516 (PPPoE)
- Supports RFC1483 (EoA)(Bridged *and Router)
- Supports RFC1577 (IPoA)

 **Note:** "*" Needs the third-party software.

1.3 Transmit data-rate

- Max download data-rate: 24Mbps
- Max upload data-rate: 1Mbps
- Max line length: 6Km

1.4 ATM property

- AAL0, AAL5, OAM, RM, and raw cell types supported
- Direct hardware support for 4 Receive VCs, with additional RX VCs and TX VCs supported in software
- Full 24-bit Virtual Path Identifier (VPI) and Virtual Circuit Identifier (VCI)

1.5 System support

- Support PVC
- Support NAT、DHCP and so on
- Support IEEE 802.3、IEEE 802.3u
- Support 10Base-T/100BASE-TX full-duplex or half duplex Ethernet
- Support Auto-MDIX
- Support USB 1.1 device interface

1.6 Working environment

- Operating temperature: 0 °C~40 °C
- Storage temperature: -40 °C~70 °C
- Humidity: 10%~90% (non-condensing)

1.7 Electric parameter

- Adaptor power Output: 9VAC/0.8A, 50Hz or 60 Hz
- Power consumption: 6W Maximum

Chapter 2. Hardware Installation Guide

The TD-8841 maintains six separate interfaces, four Ethernet ,one USB interface and one ADSL interface. The Router should not be located where it will be exposed to moisture or excessive heat. Place the Router in a location where it can be safely connected to the various devices as well as to a power source.

2.1 System requirement

Confirm your computer has been installed with networking interface card (NIC) before connecting ADSL2+ ROUTER to your computer, with the operating system supporting the TCP/IP protocol.

2.2 LED explanation

The front panel of ADSL2+ ROUTER includes one power indicator (RED) and eight function indicators (GREEN), as explained in following chart:

Indicator	Description	Status	Function Details
PWR	Power	On	Power OK
		Off	Power fail
ADSL	ADSL status	Slow flash	Self-detecting when power up
		Quick flash	Connecting to the telecom network
		On	Connection to telecom network OK
ALARM	Mistake	On	There is mistake when ADSL transmitting data or receiving data
		Off	ADSL normal
ACT	Data	On	There is data transmitting or receiving on WAN port
		Off	No data transmitting or receiving on WAN port
USB	USB status	On	Connection to telecom network OK
		Off	Connect on USB port abnormal
		Flash	Data transmitting or receiving
LAN(1~4)	Ethernet	On	LAN port normal
		Off	Connection on LAN port abnormal
		Flash	Data transmitting or receiving on LAN port

2.3 Rear-panel

- **ON/OFF:** Turn on/off the ADSL2+ ROUTER's power.
- **Power (9VAC/0.8A input):** please do not use any unknown power adaptor, otherwise your ADSL2+ ROUTER may be damaged.

- **RESET(reset default):** First press the reset button of ROUTER, then turn on the ROUTER's power for at least three seconds. It will resume the default manufacturer's setup.
- **LAN:** Connect with your computer's NIC.
- **USB:** Connect with your computer's USB interface
- **LINE(WAN):** Connect to the MODEM Port of Splitter or Connecting the telephone line.

2.4 Hardware installation procedures

The procedure to install the Router can be described in general terms in the following steps and shown as Figure 2-1:

First Step: Connecting the MODEM port of Splitter with the LINE port of the TD-8841 ADSL2+ ROUTER by telephone line. While you need to use a telephone, please attach telephone line into the phone of Splitter.

Second Step: Connect category 5 cable with RJ45 jacks to ADSL2+ ROUTER's LAN port and your computer's NIC. Or connect USB cable to ADSL2+ ROUTER's USB port and your computer's USB interface.

Third Step: Plug one end of the AC Power Adapter into the Power jack on the Ethernet ADSL2+ ROUTER and the other end to a standard electrical outlet.

Last Step: Check the line connection to see if everything is ready. Power up finally.

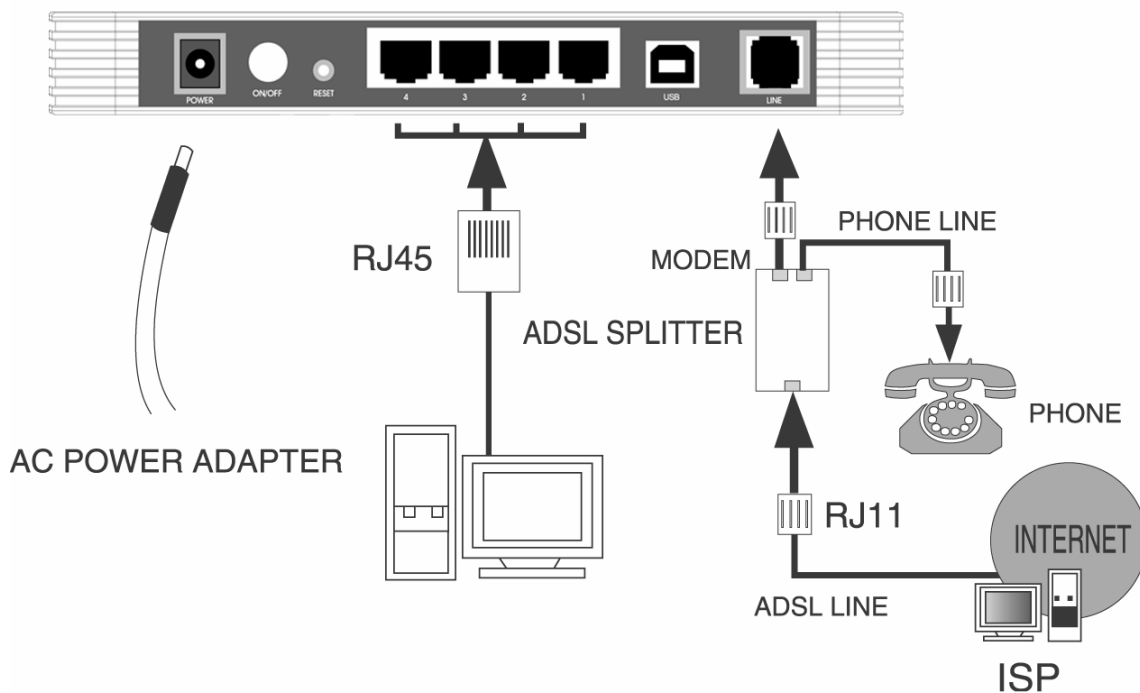



Figure 2-1

Chapter 3. System Configuration

3.1 Computer Configuration

The default IP address of the ADSL2+ ROUTER is 192.168.1.1, and the default Subnet Mask is 255.255.255.0. These values can be seen from the LAN, and can be changed as your desire. As an example, we use the default values for description in this guide.

1. Connect the cable according to Chapter 2, turn on the power.
2. Connect the local PCs to the ADSL2+ ROUTER's LAN port. There are then two means to configure the IP address for your PCs.
 - Configure the IP address manually
 - 1) Set up the TCP/IP Protocol for your PC(s).
 - 2) Configure the network parameters. The IP address is 192.168.1.xxx ("xxx" is from 2 to 254), Subnet Mask is 255.255.255.0, and Gateway is 192.168.1.1 (The ADSL2+ ROUTER's default IP address).
 - Obtain an IP address automatically
 - 1) Set up the TCP/IP Protocol in "**Obtain an IP address automatically**" mode on your PC(s).
 - 2) Power off the ADSL2+ ROUTER and PC(s). Then turn on it, and restart the PC(s). The built-in DHCP server will assign IP addresses for the PC(s).

 **Note:** If you need instructions as to how to do this, please refer to [Appendix B: Configuring the PCs](#).

Remarks: you can check whether your configuration is successful through **PING** command. Enter **Ping 192.168.1.1**

If the screen looks like the following, you have been successful.

```
Pinging 192.168.1.1 with 32 bytes of data:
Reply from 192.168.1.1 : bytes=32 time<1ms TTL=128
Reply from 192.168.1.1 : bytes=32 time<1ms TTL=128
Reply from 192.168.1.1 : bytes=32 time<1ms TTL=128
Reply from 192.168.1.1 : bytes=32 time<1ms TTL=128

Ping statistics for 192.168.1.1 :
    Packets: Sent = 4, Received = 4, Lost = 0 (0% loss),
    Approximate round trip times in milli-seconds:
        Minimum = 0ms, Maximum = 0ms, Average = 0ms
```

If the screen looks like the following, the connection has failed. Please try again.

```
Pinging 192.168.1.1 with 32 bytes of data:  
  
Request timed out.  
Request timed out.  
Request timed out.  
Request timed out.  
  
Ping statistics for 192.168.1.1:  
    Packets: Sent = 4, Received = 0, Lost = 4 (100% loss),
```

3.2 Login

Startup Internet Explorer, and enter 192.168.1.1; then enter default user name(admin) 、 password(admin), When ADSL2+ connection is OK, you will see the Figure 3-1.



Figure 3-1

You will then see the Figure 3-2. You will see some information such as link rate and so on.

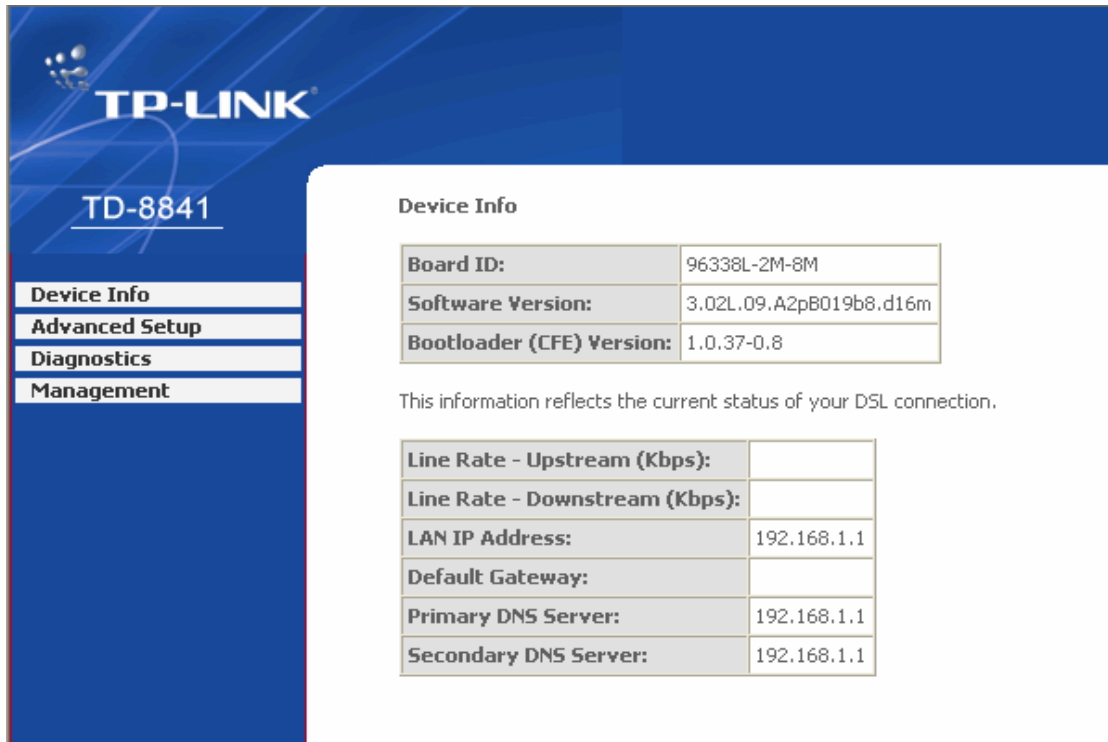


Figure 3-2

Default value of user name and password is “admin”; if you want to change them, please go to “Management” → “Access control”→“Passwords” changing them. (Figure 3-3)

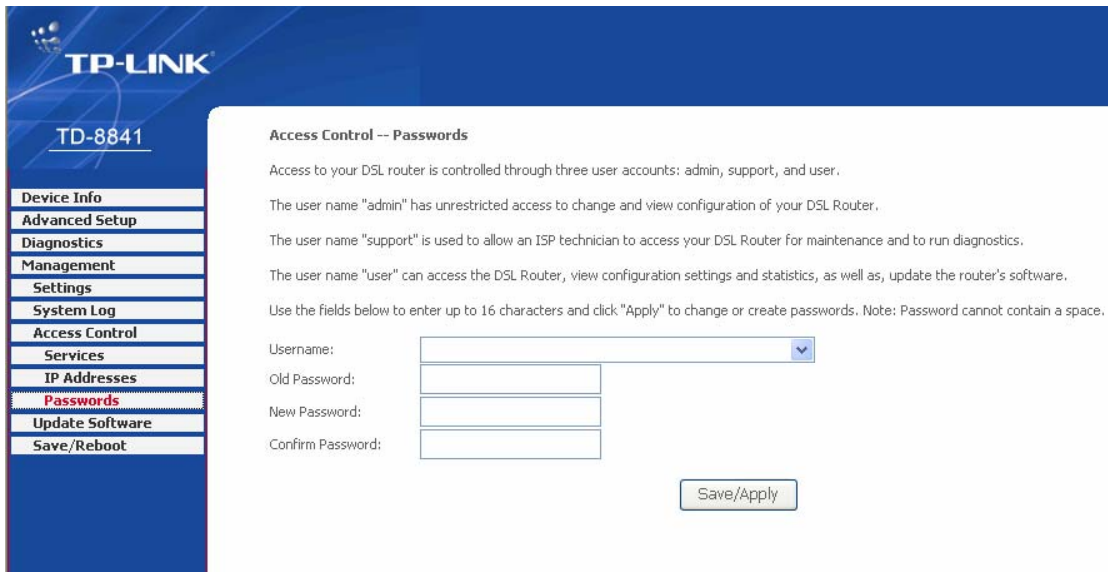


Figure 3-3

3.3 Web Setup

Choose “Advanced Setup”→“WAN”, you will enter the page of Wide Area Network (WAN) Setup, you will see the Figure 3-4.

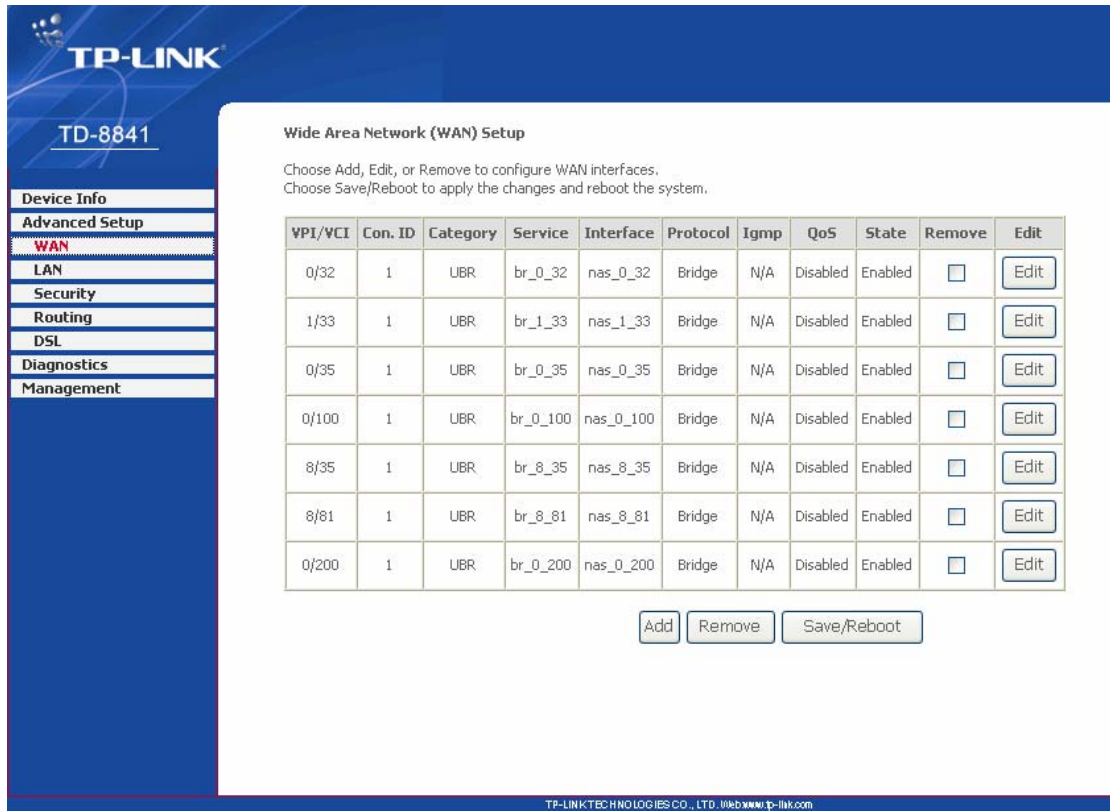


Figure 3-4

There are 7 PVC links in the **WAN** setup page, choose the fit PVC according to your needs, and then click the **edit** button, you will enter the page of ATM PVC Configuration (See Figure 3-5).

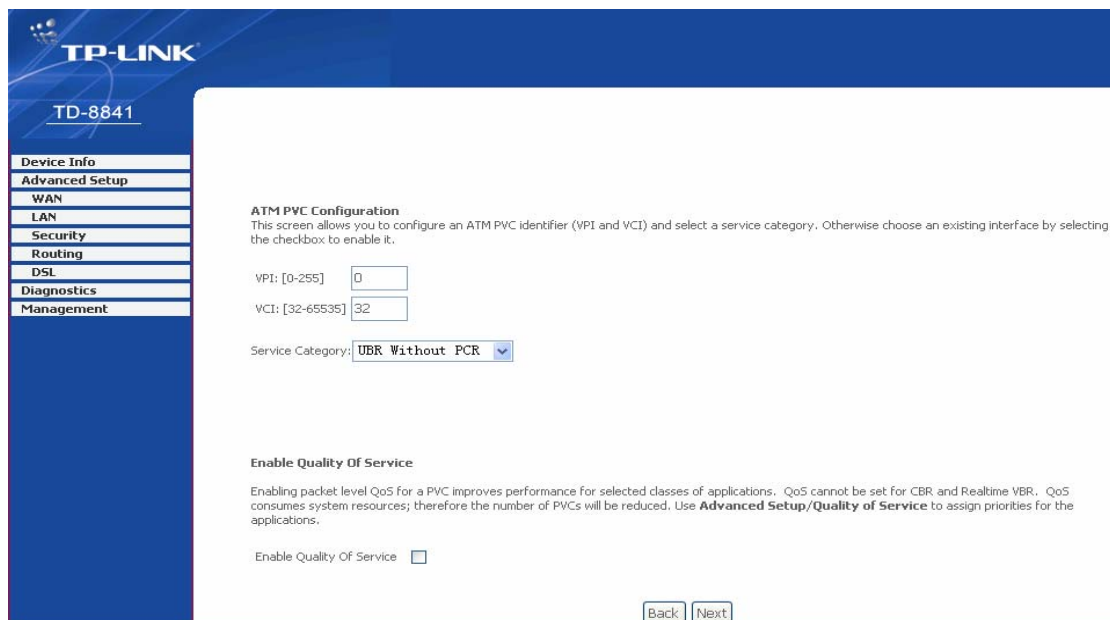


Figure 3-5

Enter **VPI/VCI** value and service category which is provided by your ISP, click **next** to enter the next step. You will see the Figure 3-6.

Note:

The type of network protocol selected may be different in different areas, there are five types (Figure 3-7) , So you should ask your ISP to acquire the local type of network protocol and Encapsulation mode.

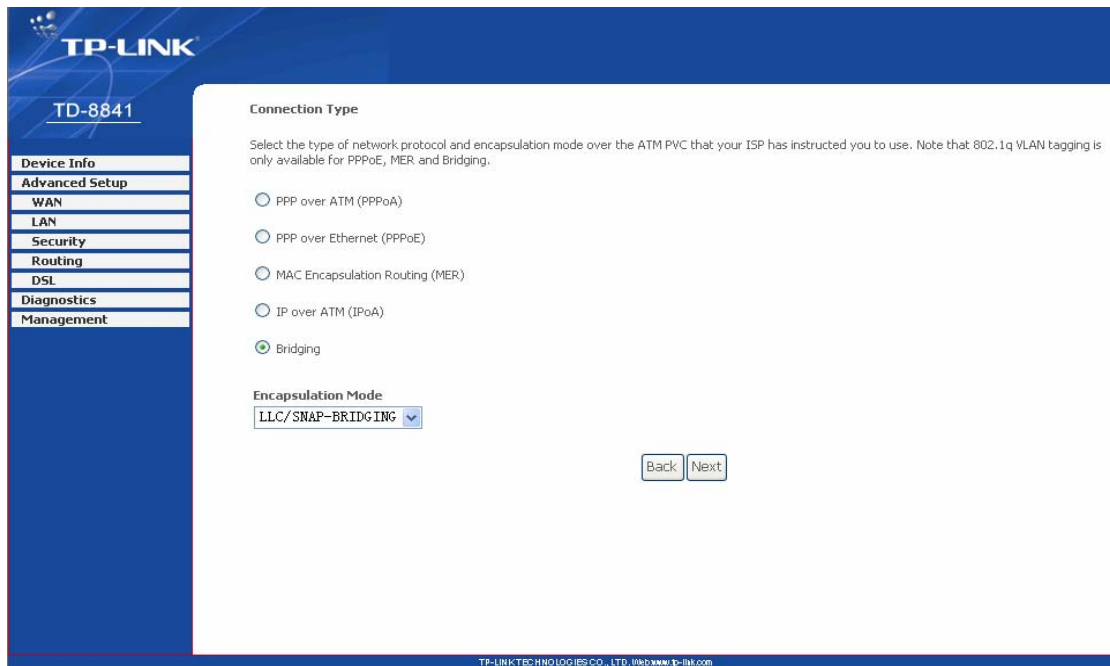


Figure 3-6

After choosing the proper protocol, enter the correct parameters supported by your ISP. Enable the configurations, then you will go to Internet.

➤ **PPP over ATM (PPPoA)**

If you select the protocol of PPP over ATM (PPPoA), you will see the Figure 3-7, enter the value of user name and password which is provided by your ISP, after selecting the other function (often using the default setup), click the **next** button.

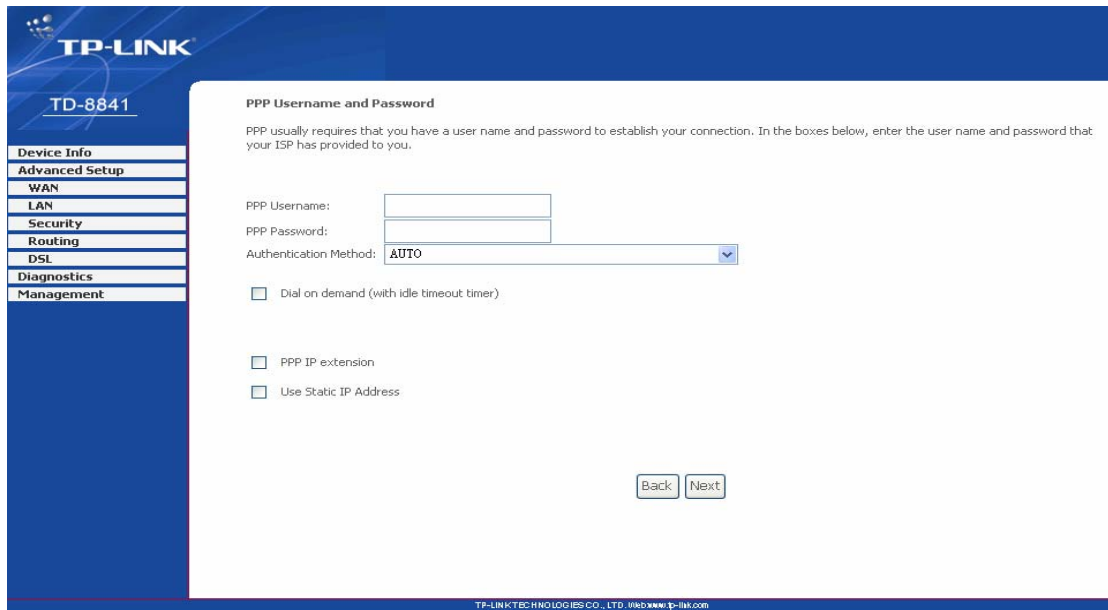


Figure 3-7

You will see the Figure 3-8. Then turn on the selected functions according to your demands. Clicking the **next** button to enter the next step, you will see the Figure 3-9, finally click **save** to complete the configuration.

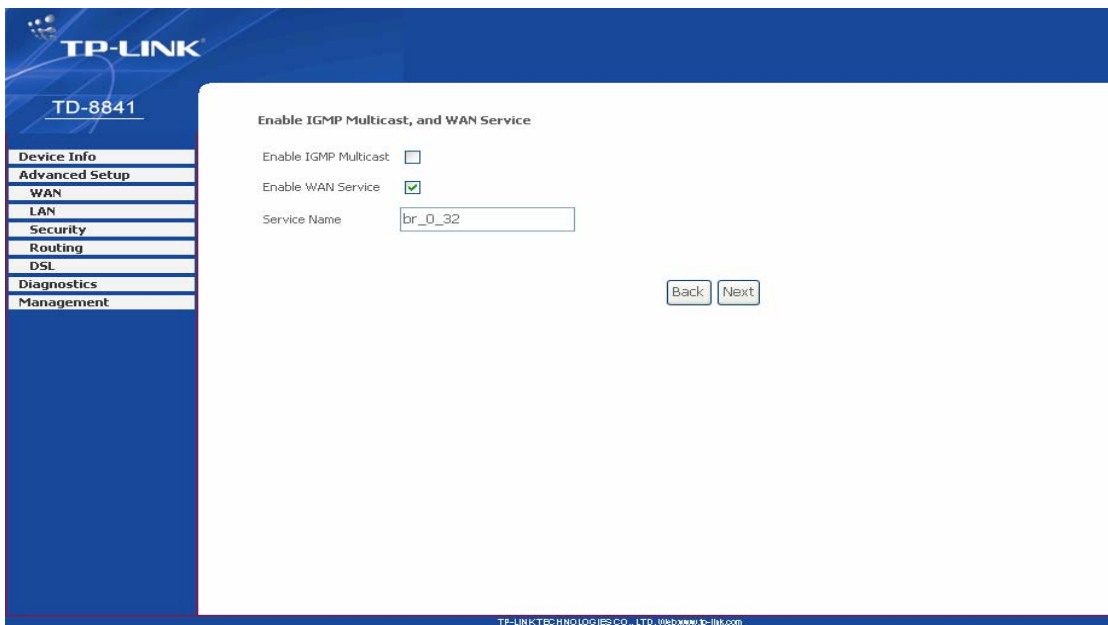


Figure 3-8

TP-LINK

TD-8841

WAN Setup - Summary

Make sure that the settings below match the settings provided by your ISP.

VPI / VCI:	0 / 32
Connection Type:	PPPoA
Service Name:	br_0_32
Service Category:	UBR
IP Address:	Automatically Assigned
Service State:	Enabled
NAT:	Enabled
Firewall:	Enabled
IGMP Multicast:	Disabled
Quality Of Service:	Disabled

Click "Save" to save these settings. Click "Back" to make any modifications.
NOTE: You need to reboot to activate this WAN interface and further configure services over this interface.

TP-LINK TECHNOLOGIES CO., LTD. Web: www.tp-link.com

Figure 3-9

➤ PPP over Ethernet (PPPoE)

If you select the protocol of PPP over Ethernet (PPPoE), you will see the Figure 3-10, enter the value of user name and password which is provided by your ISP, after selecting the other function (often using the default setup), click the **next** button.

TP-LINK

TD-8841

PPP Username and Password

PPP usually requires that you have a user name and password to establish your connection. In the boxes below, enter the user name and password that your ISP has provided to you.

PPP Username:

PPP Password:

PPPoE Service Name:

Authentication Method:

Dial on demand (with idle timeout timer)

PPP IP extension

Use Static IP Address

TP-LINK TECHNOLOGIES CO., LTD. Web: www.tp-link.com

Figure 3-10

You will see the Figure 3-11. Then turn on the selected functions according to your needs. Clicking the **next** button to enter the next step, you will see the Figure 3-12, finally click **save** to complete the configuration.

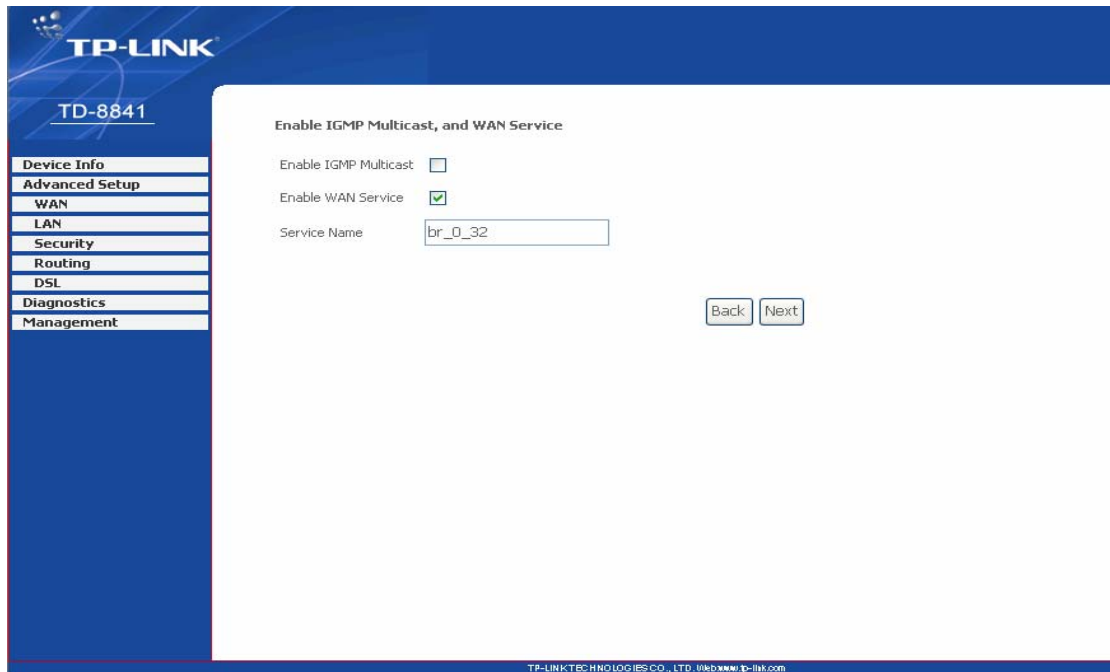


Figure 3-11

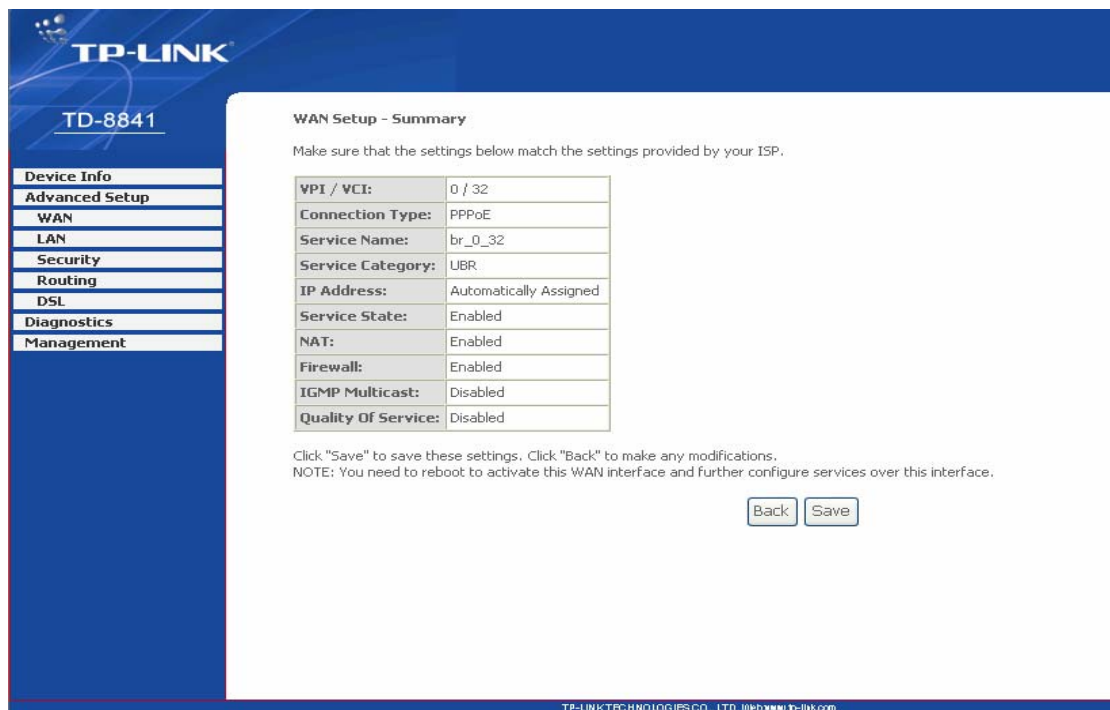


Figure 3-12

➤ MAC Encapsulation Routing (MER)

If you select the protocol of MAC Encapsulation Routing (MER), you will see the page (Figure 3-13) Enter the parameter and the way which is provided by your ISP, then click the **next** button.

TP-LINK

TD-8841

Device Info

Advanced Setup

WAN

LAN

Security

Routing

DSL

Diagnostics

Management

WAN IP Settings

Enter information provided to you by your ISP to configure the WAN IP settings.
Notice: DHCP can be enabled for PVC in MER mode if "Obtain an IP address automatically" is chosen. Changing the default gateway or the DNS effects the whole system. Configuring them with static values will disable the automatic assignment from DHCP or other WAN connection.
If you configure static default gateway over this PVC in MER mode, you must enter the IP address of the remote gateway in the "Use IP address". The "Use WAN interface" is optional.

Obtain an IP address automatically

Use the following IP address:

WAN IP Address:

WAN Subnet Mask:

Obtain default gateway automatically

Use the following default gateway:

Use IP Address:

Use WAN Interface:

Obtain DNS server addresses automatically

Use the following DNS server addresses:

Primary DNS server:

Secondary DNS server:

TP-LINK TECHNOLOGIES CO., LTD. www.tp-link.com

Figure 3-13

You will see the Figure 3-14. Then turn on the selected functions according to your needs. Clicking the **next** button to enter the next step, you will see the Figure 3-15, finally click **save** to complete the configuration.

TP-LINK

TD-8841

Device Info

Advanced Setup

WAN

LAN

Security

Routing

DSL

Diagnostics

Management

Network Address Translation Settings

Network Address Translation (NAT) allows you to share one Wide Area Network (WAN) IP address for multiple computers on your Local Area Network (LAN).

Enable NAT

Enable Firewall

Enable IGMP Multicast, and WAN Service

Enable IGMP Multicast

Enable WAN Service

Service Name:

TP-LINK TECHNOLOGIES CO., LTD. www.tp-link.com

Figure 3-14

TP-LINK

TD-8841

WAN Setup - Summary

Make sure that the settings below match the settings provided by your ISP.

VPI / VCI:	0 / 32
Connection Type:	MER
Service Name:	br_0_32
Service Category:	UBR
IP Address:	Automatically Assigned
Service State:	Enabled
NAT:	Enabled
Firewall:	Enabled
IGMP Multicast:	Disabled
Quality Of Service:	Disabled

Click "Save" to save these settings. Click "Back" to make any modifications.
NOTE: You need to reboot to activate this WAN interface and further configure services over this interface.

TP-LINK TECHNOLOGIES CO., LTD. www.tp-link.com

Figure 3-15

➤ IP over ATM (IPoA)

If you select the protocol of IP over ATM (IPoA), you will see the Figure 3-16, enter the parameter and the way which is provided by your ISP, then click the **next** button.

TP-LINK

TD-8841

WAN IP Settings

Enter information provided to you by your ISP to configure the WAN IP settings.

Notice: DHCP is not supported in IPoA mode. Changing the default gateway or the DNS effects the whole system. Configuring them with static values will disable the automatic assignment from other WAN connection.

WAN IP Address:

WAN Subnet Mask:

Use the following default gateway:

Use IP Address:

Use WAN Interface:

Use the following DNS server addresses:

Primary DNS server:

Secondary DNS server:

TP-LINK TECHNOLOGIES CO., LTD. www.tp-link.com

Figure 3-16

You will see the page (Figure 3-17), then turn on the selected functions according to your needs. Clicking the **next** button to enter the next step, you will see the Figure 3-18, finally click **save** to complete the configuration.

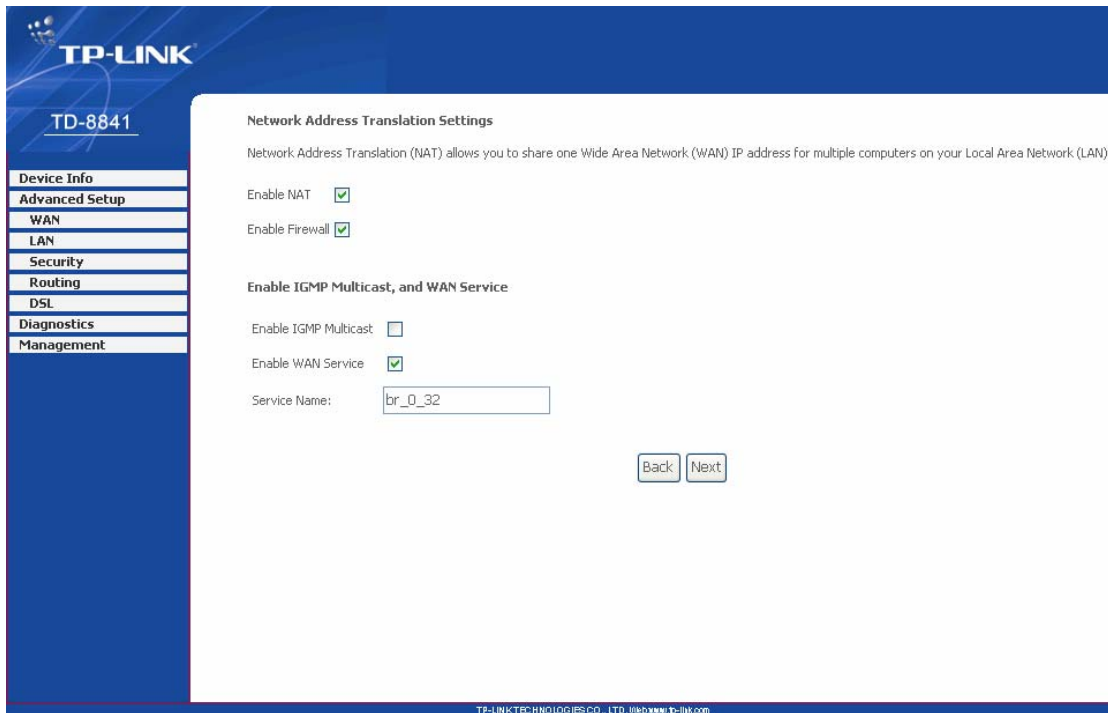


Figure 3-17

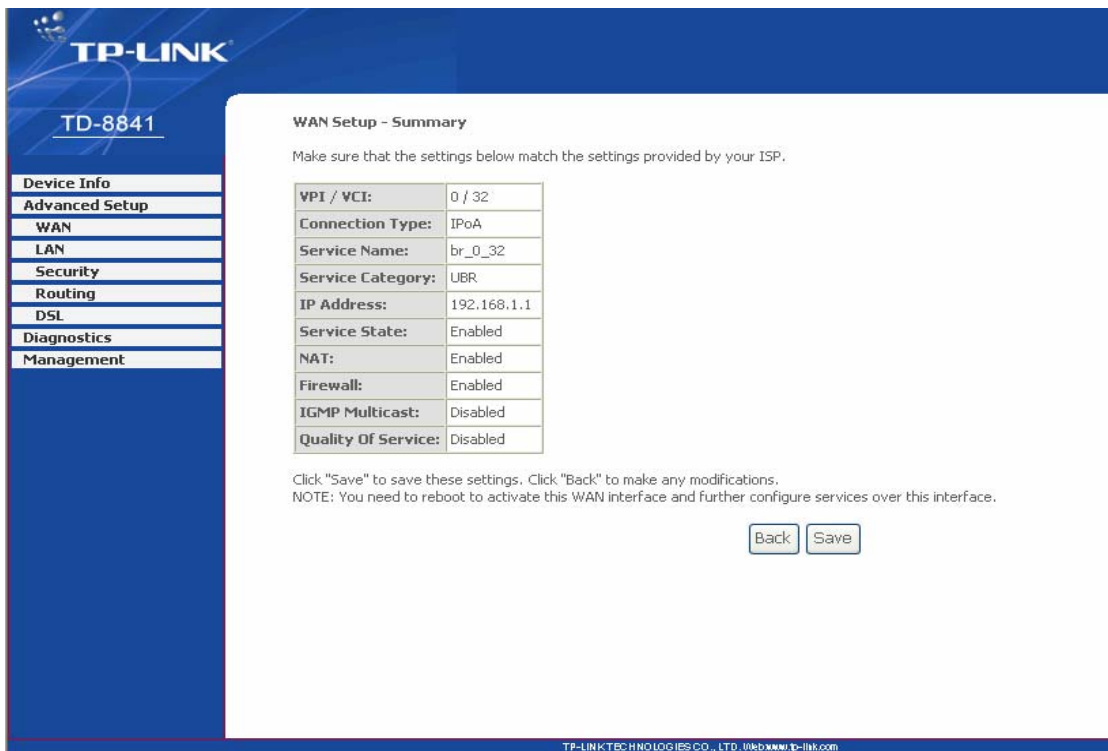


Figure 3-18

➤ **Bridging**

If you select the Bridging protocol, you just open the bridge service function options, you will see the Figure 3-19, then click the **next** button, you will see the Figure 3-20, finally press **save** to complete the configuration.

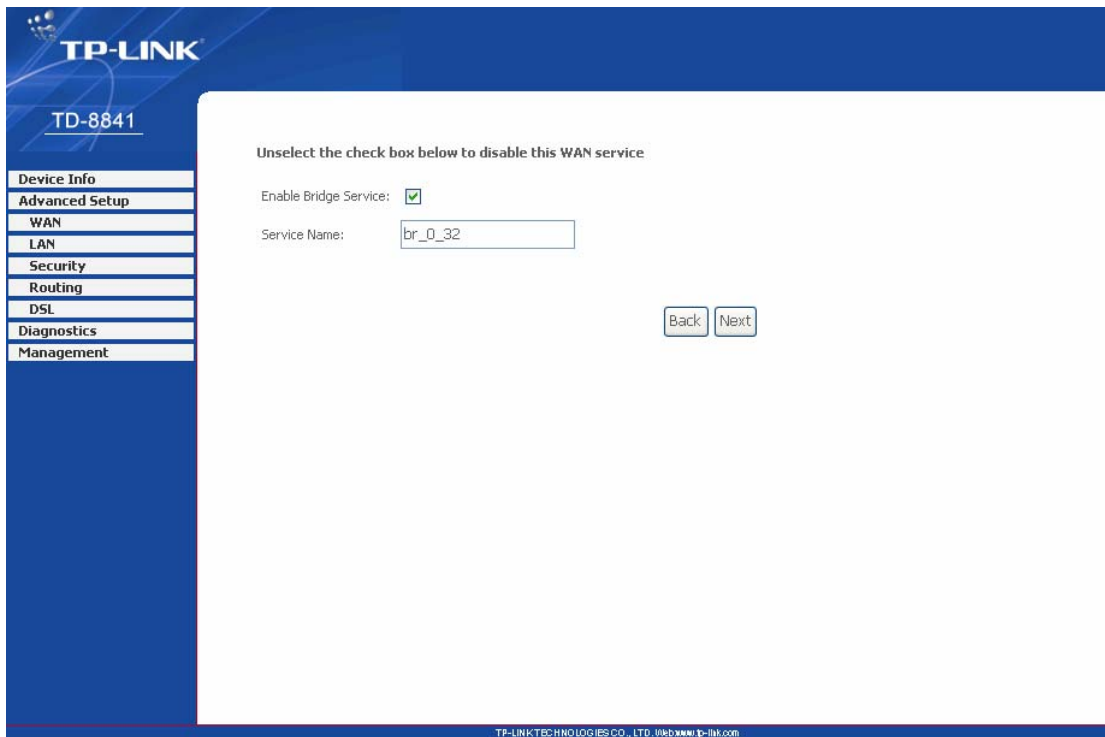


Figure 3-19

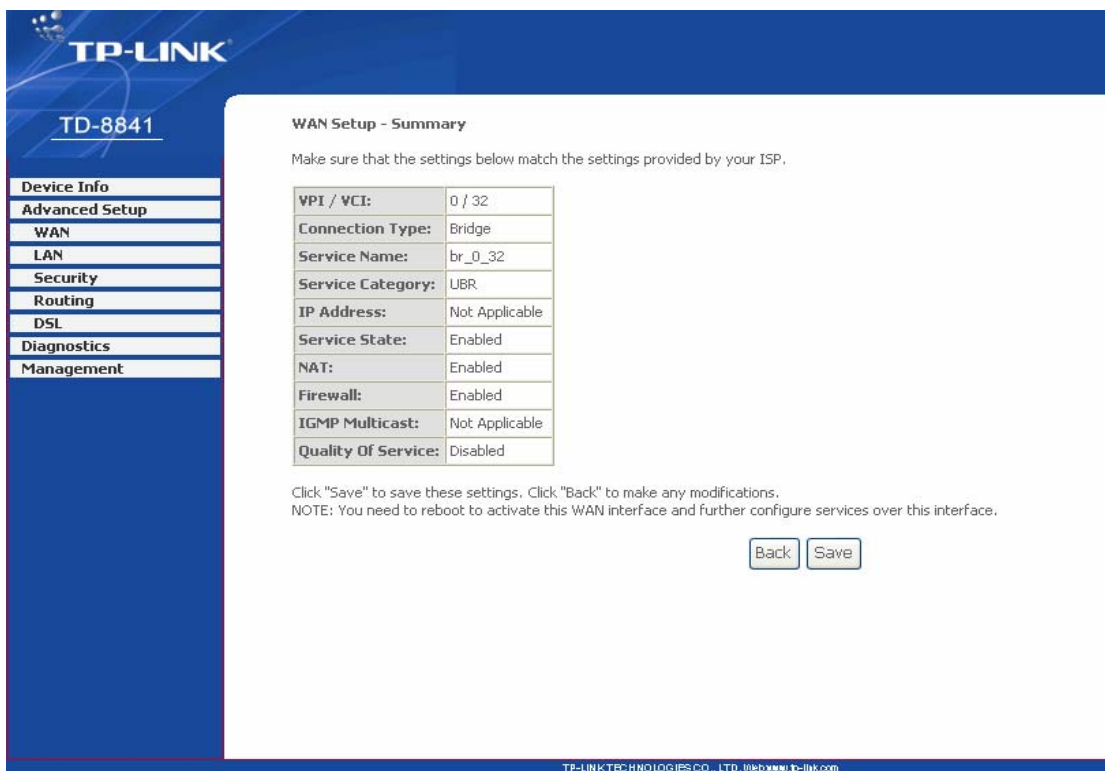


Figure 3-20

Note:

After you complete the settings, the new settings must be saved and the Router must be restarted for the settings to go into effect. Please press the Save/Reboot button to restart, referring to the Figure 3-21.

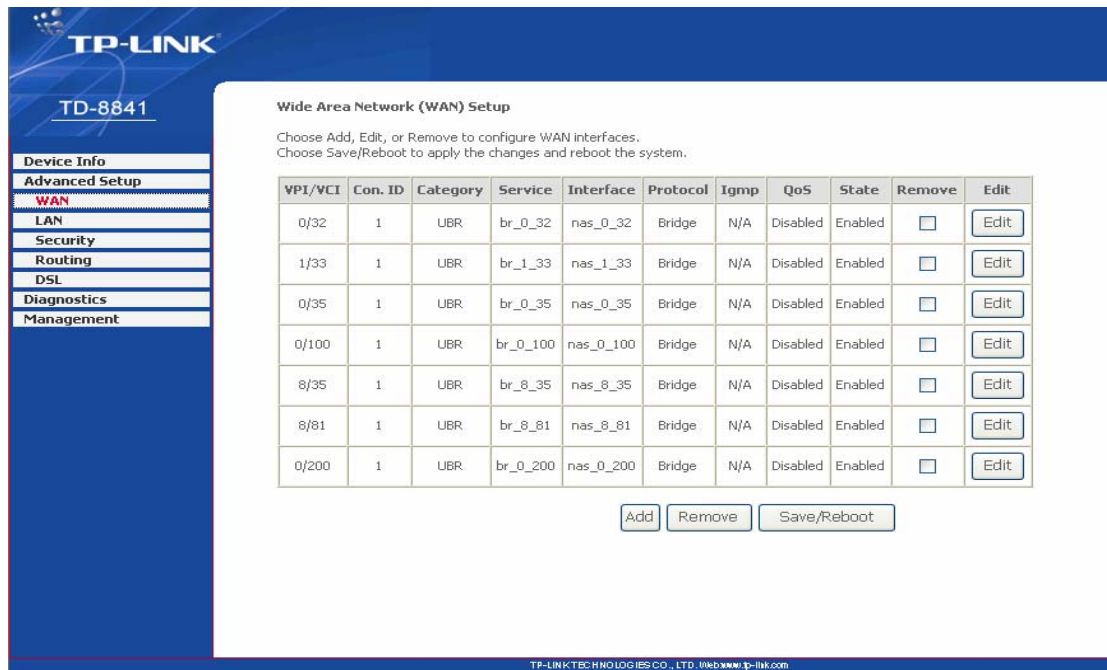


Figure 3-21

3.4 Software Dial

If TD-8841 CPE work in bridged (RFC 1483 Bridged) mode when it connects Internet. You must to install dial software on your PC. There are some software working on WINDOWS in market, example for EnterNet3000、RASPPPoE、WinPeET.

How do I set up the connection in the windows XP?

- Users of Windows XP can click the “**start->All Programs->Accessories->Communications->New connection wizard**”, then click **Next** to enter the setting page.
- Please you select the “**connect to the internet**”, and then click the **Next** button to enter the next page and select the “**set up my connection manually**”, click **Next** to enter the next page.
- Please select the “**connect using a broadband connection that requires user name and password**”, click **Next** to type the name of your ISP in the current page, and then click **Next**.
- Type an **ISP account name** and **password**, if you have forgotten an existing account name or password, please connect with your ISP, click **Next**.
- To create the connection and close this wizard, click **finish** to add a shortcut to this connection to your desktop.
- When you assess the internet by ADSL, double-click this shortcut of dial connection in your desktop, type the account name and password, then click **connect** to connect the Internet.

How do I set up the connection in the Windows Vista?

- Users of Windows Vista can do as following: Right-press **Network->Choose Properties**,

then you can see Figure 3-22.

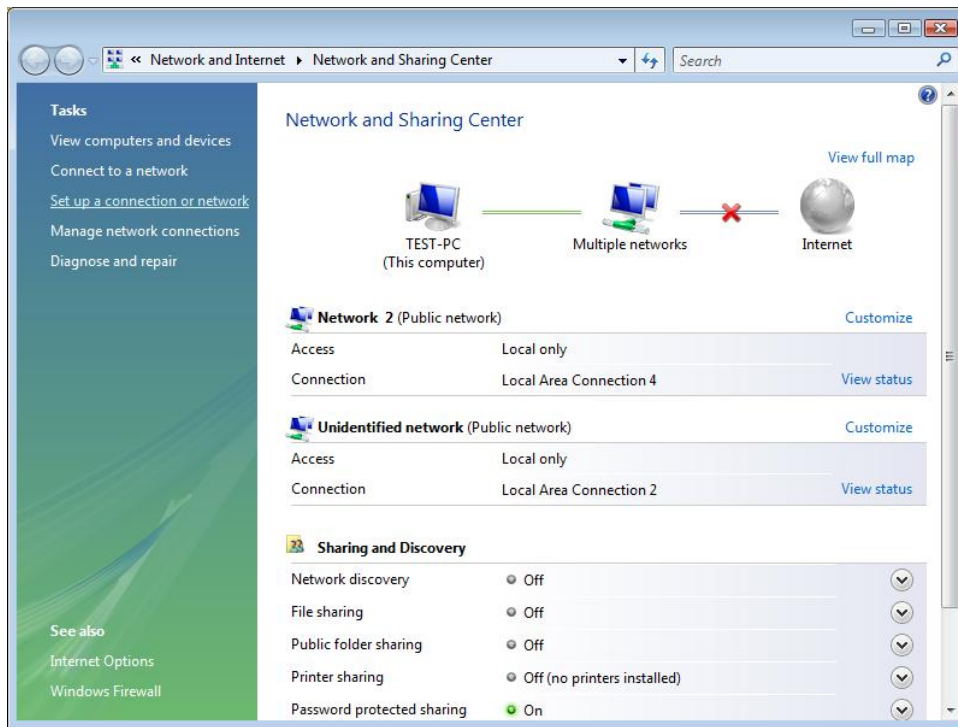


Figure 3-22

- Click **“Set up a connection or network”** in the right of this page. And choose **“Set up a dial-up connection”** in the new page, click **Next**. After that, you will see Figure 3-23, click **“Set up a connection anyway”** to enter next page.

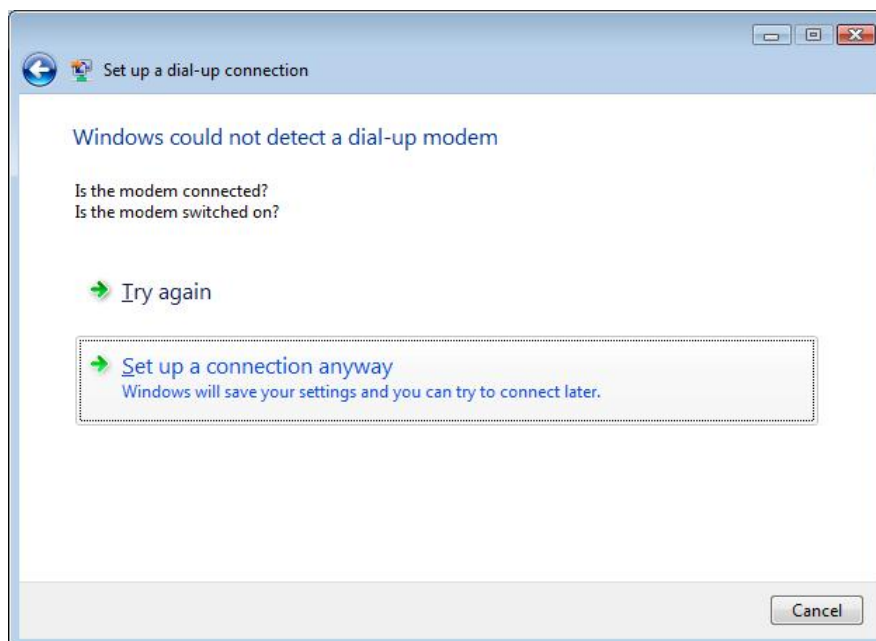


Figure 3-23

- Type the **Dial-up phone number**, the **User name** and **password** supplied by your ISP in the new page, if you have forgotten an existing user name or password, please connect with your ISP. Click **Create** to create the dial-up connection.

- Click **Close** to finish the setup.
- To connect to the Internet next time, click the **Start** button, click **Connect to**, and then click the connection you just created.

3.5 USB Configuration

If you use the USB interface, First of all you must install the USB's drive to the using computer. You can obtain the drives from the provided CD or download from our website. (<http://www.tp-link.com>)

USB Drive installation procedures

If the hardware is installed before the computer is Power On. Please turn on the computer and enter into the windows operating system, Then the operating system will identify the device. If the hardware is installed after the computer is Power On The desktop will display the information of found the new hardware.

Then You will see the Figure 3-24 require install software for USB Device, select 'Install from a list or specific location (Advanced)'and Clicking the **next** button to enter the next step. You will see the Figure 3-25.



Figure 3-24

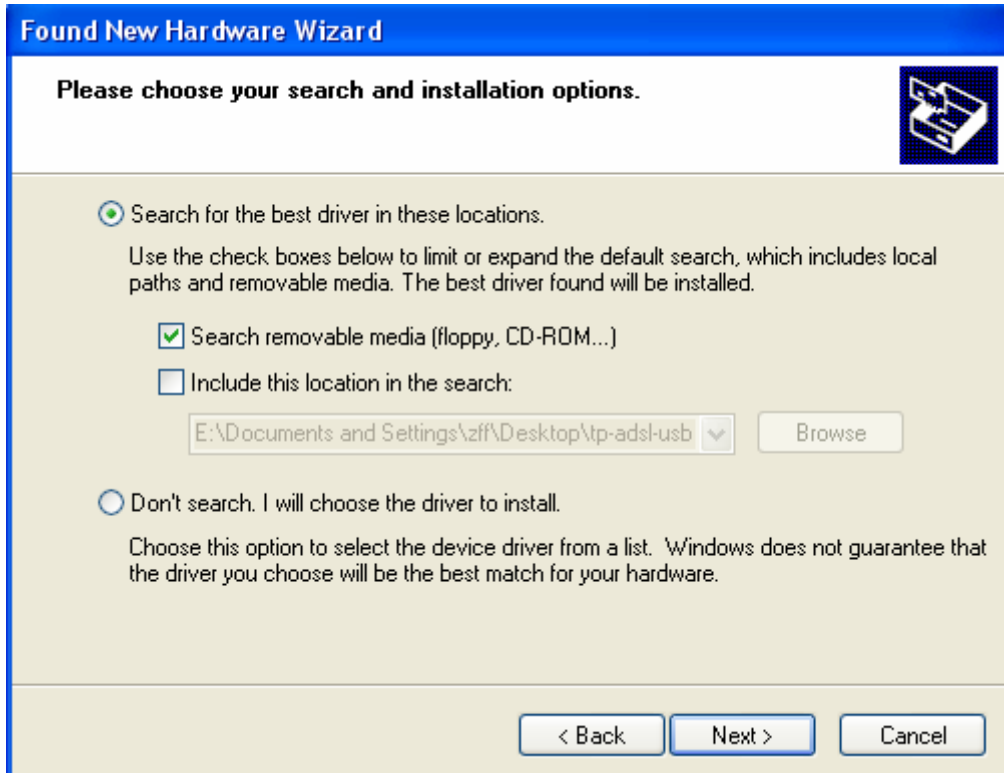


Figure 3-25

Select the 'search removable media(floppy, CD-ROM...)'. and click the **next** button You will see the Figure 3-26. The driver will be search and installed.

 **Note:** You must insert the CD first.

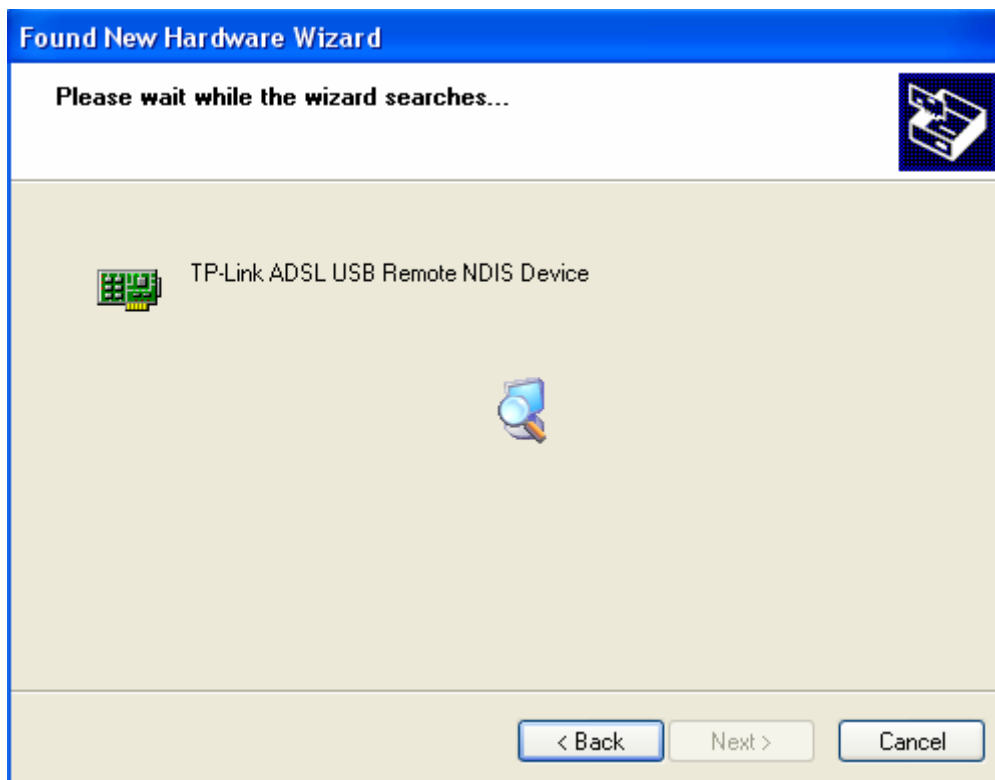


Figure 3-26

Waiting and you will see the Figure 3-27. The driver has finished installation, click **Finish** to close the installation.

Please reference to chapter 3.1 to finish the IP configuration of USB network connect. Then you could use the USB device.

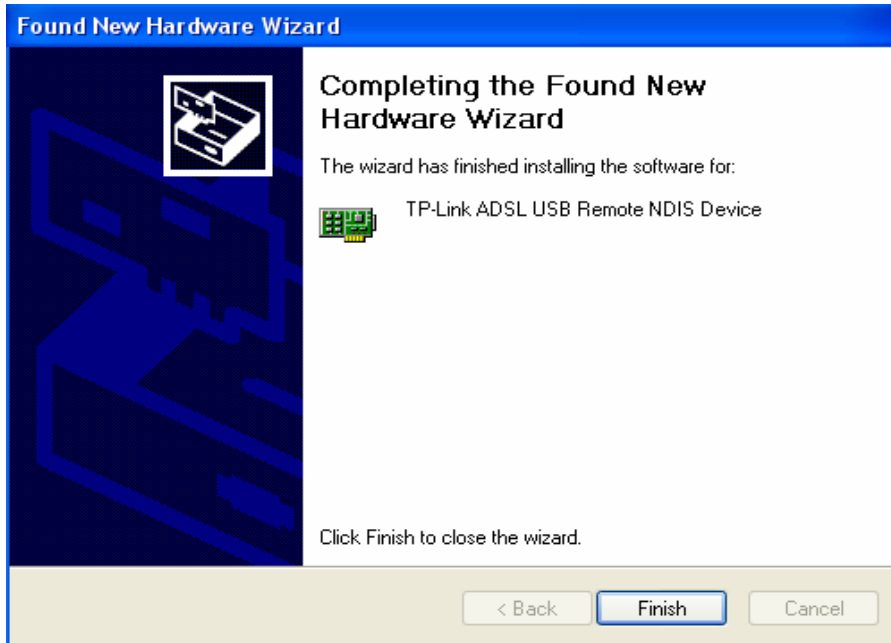


Figure 3-27

Users of Windows Vista will see the Figure 3-28. Click the **“Locate and install driver software (recommended)”** to install driver software for your USB Network Interface.



Figure 3-28

After that you will enter the next page shown as Figure 3-29. Click “Don’t search online”.

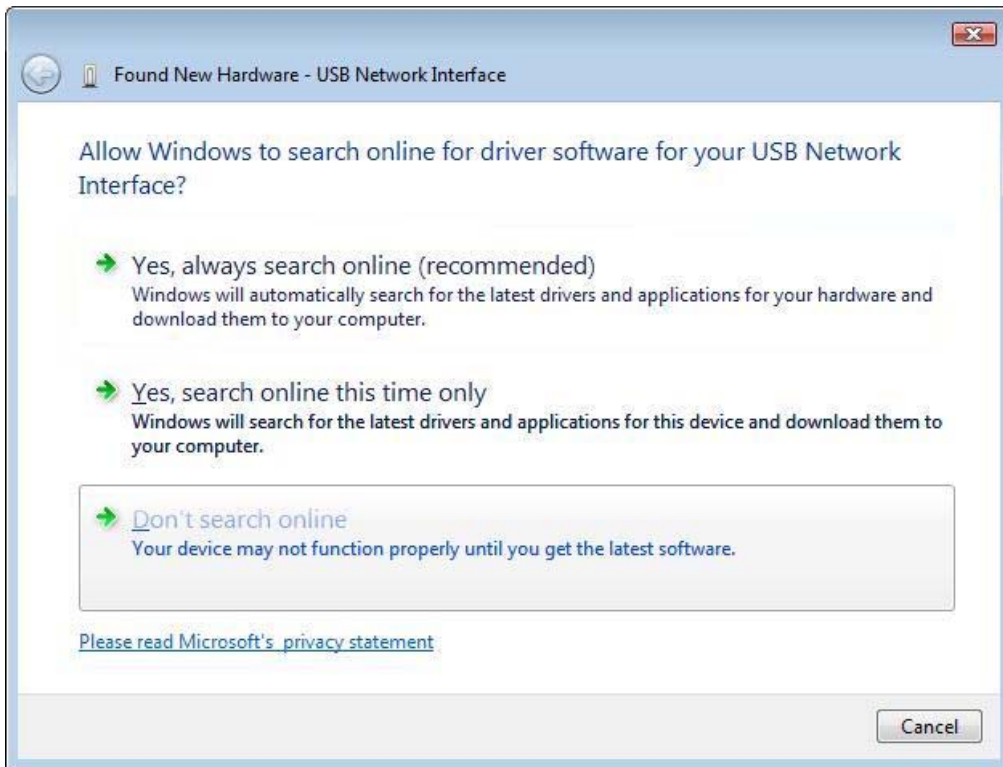


Figure 3-29

Then Figure 3-30 will be displayed. Click **Next** to search and install the driver from your CD.

Note: You must insert the CD first.

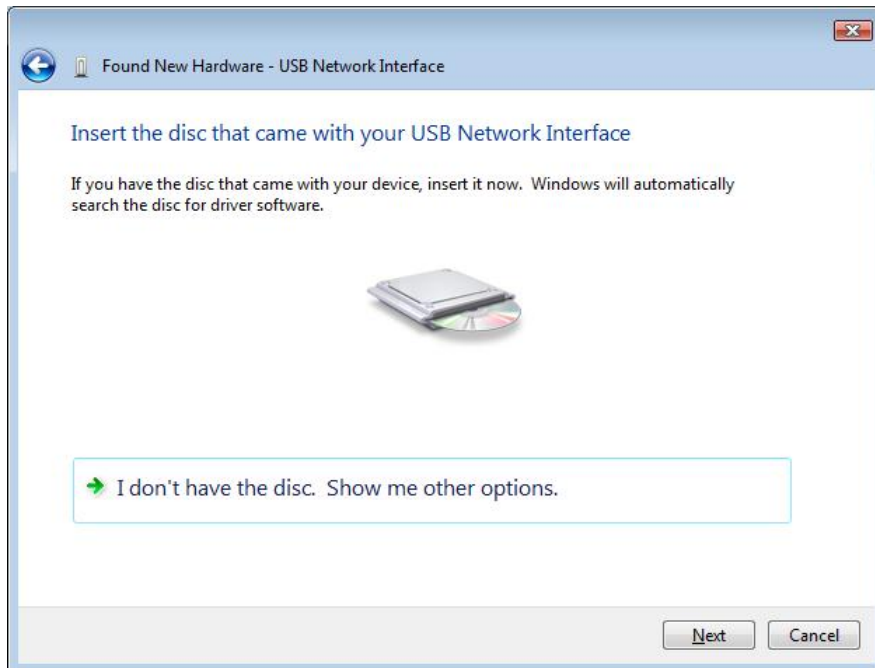


Figure 3-30

When Windows find the driver automatically, it will pop up Figure 3-31. Select “**Install this driver anyway**” to continue the installation.

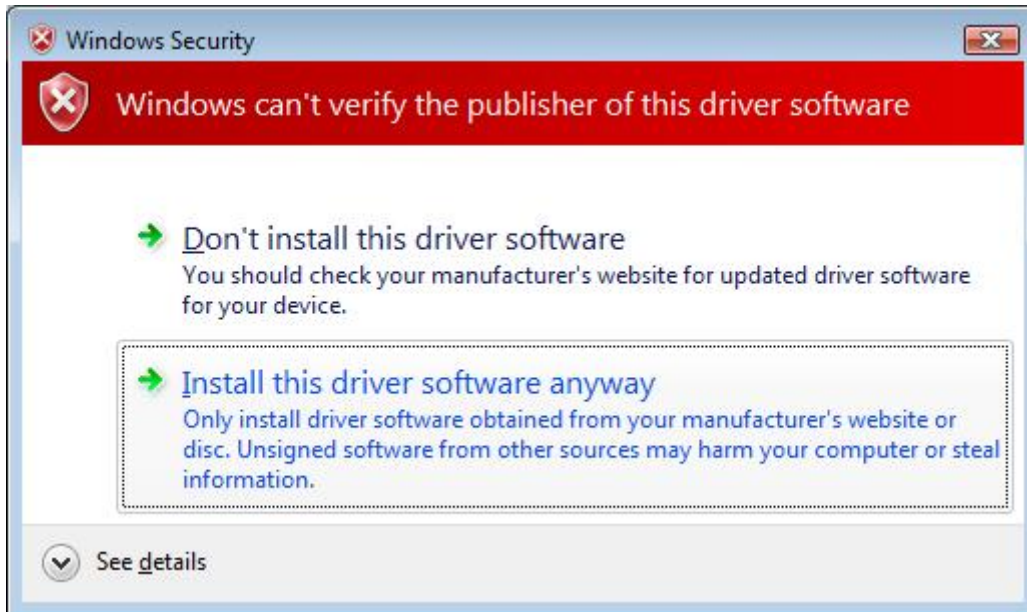


Figure 3-31

Then please wait a second and you will see Figure 3-32 which indicates that the installation has been finished. Finally, click **Close** to finish it completely.

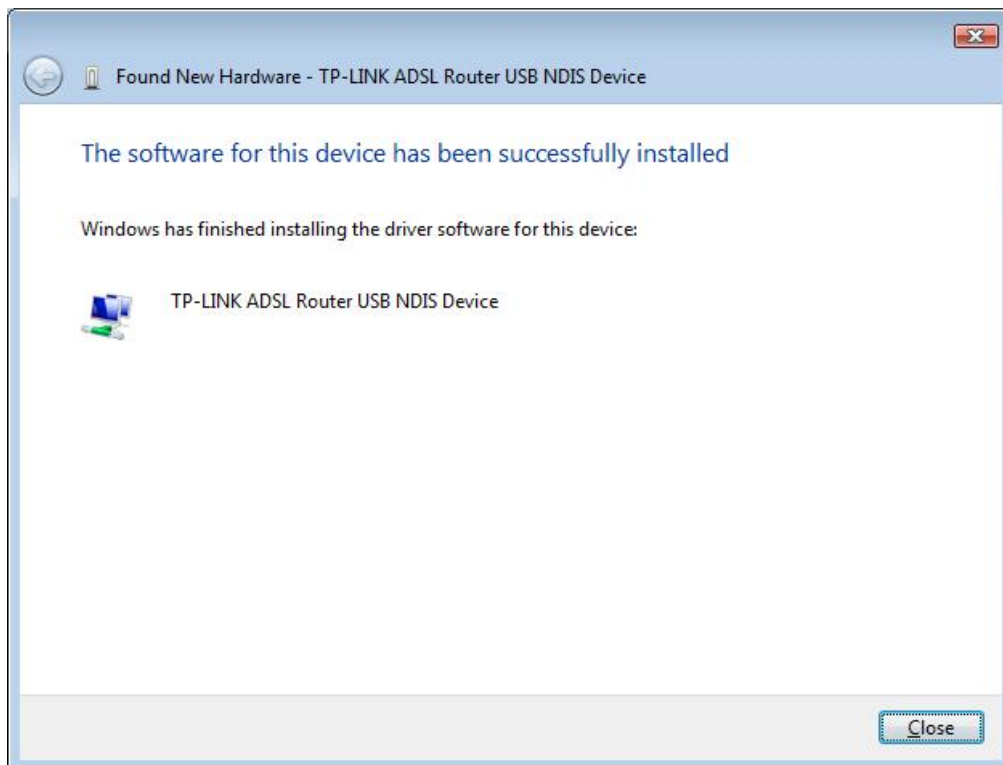



Figure 3-32

You can see following figure at the bottom of the screen.




Figure 3-33

 **Note:** If you want cut off the USB device you must disconnect the network of USB first.

Chapter 4. Advantage management setup

In order to satisfy our customer's needs we offer an excellent Web management interface. Feel free to utilize the Advantage application and online software upgrades. The functions of the Web management interface are as follows:

- Upgrade software
- Modify the default IP address of the port of LAN(192.168.1.1)
- Modify the login password
- Configure DHCP
- Check the information of IP and the operation status
- Configure the NAT function
- Configure the DNS parameters
- Configure RIP(Routing Information Protocol)
- Configure IP route
- Configure Security rule
- Configure DSL parameter

 **Note:** If you want to acquire further details, please access our website (www.tp-link.com) and consult the advantage user guide of TD-8841.

Chapter 5. FQA

1. **What related parameters are required to acquire ISP when you want to access the internet by ADSL2+ ROUTER?**
 - 1) Dial user: Connection protocol, User name, Password, Value of VPI/VCI, Encapsulation mode of AAL5 and so on.
 - 2) Static IP user: Connection protocol, WAN IP Address, Subnet Mask, Gateway, Value of VPI/VCI, Encapsulation mode of AAL5 and so on.
2. **About Connection protocol, VCI/VPI, Encapsulation mode of AAL5**
 - 1) This product supports the PPP protocol over ATM (PPPoA)、PPP over Ethernet (PPPoE)、MAC Encapsulation Routing (MER)、IP over ATM (IPoA) and Bridging. You may be used with any one of the five protocols above. Because the ISP in different areas supports different protocol, you must choose the protocol which is supported by your ISP.
 - 2) The VPI is the English abbreviation of the Virtual Path Identifier, the VCI is the English abbreviation of the Virtual Channel Identifier, the value of VCI/VPI must be compatible with the value that provided by ISP.
 - 3) Encapsulation mode of AAL5 include: LLC/SNAP and VC_MAX(often using LLC/SNAP).
3. **Why the LAN's and the NIC's LED both bright, but the configuration interface is inaccessible?**
 - 1) Use the order of **ping 192.168.1.1** to check the Accuracy of connection.
 - 2) Check the Accuracy of working NIC.
 - 3) Whatever the setup of the IP address on your computer (if you close the DHCP function, you can't obtain the IP address automatically, must specify the IP address of your computer manually).
 - 4) Run the winipcfg order in the windows 95/98(run the ipconfig order in the windows 2000/Vista) to check whether setup the IP address, subnet mask, default gateway by DHCP.
 - 5) Resume the ADSL2+ ROUTER default configuration if necessary.
4. **Have complete all configurations, but can't dial through computer**
 - 1) Check the indicator of ADSL2+, it should be working in normally.
 - 2) Check the accuracy of parameter of value of VPI/VCI, Encapsulation mode of AAL5 and so on, whether you need to install the software of dial the number, such as Winpoet, Enternet.
 - 3) This product has the PPP dial procedure inside, so you will not need to use the dial

software if your protocol is PPPoA or PPPoE, ADSL2+ ROUTER will connect automatically.

- 4) You can check whether your ADSL2+ ROUTER succeeds in connection with **PING** command.

Appendix A: Default Configuration

USER NAME	admin
PASSWORD	admin
IP ADDRESS	192.168.1.1
VPI/VCI	0/32,1/33,0/35,0/100,0/200,8/35,8/81

Appendix B: Configuring the PCs

In this section, we'll introduce how to install and configure the TCP/IP correctly in Windows 2000/XP. First make sure your Ethernet Adapter is working, refer to the adapter's manual if needed.

1. Install TCP/IP component

- 1) Right-press **Network Neighbor** and Choose **Properties**.
- 2) Right click the icon that showed below, select Properties on the prompt page.

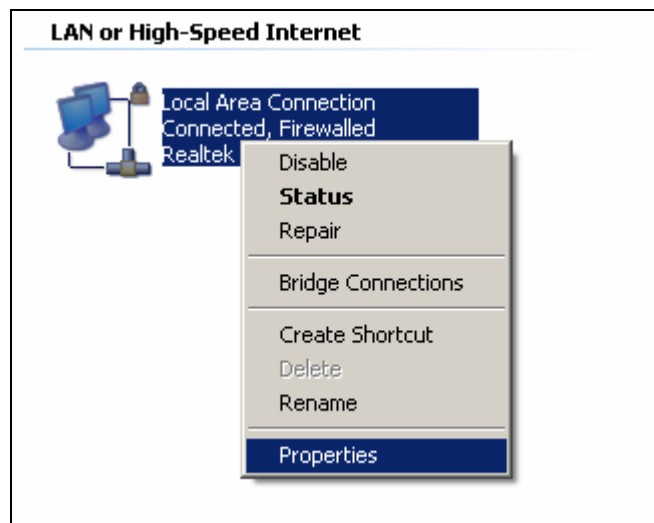


Figure B-1

- 3) In the prompt page that showed below, double click on the **Internet Protocol (TCP/IP)**.

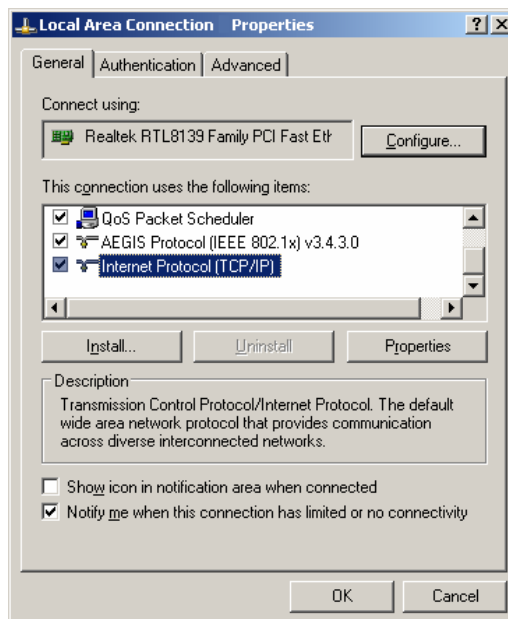


Figure B-2

- 4) The following **TCP/IP Properties** window will display and the **IP Address** tab is open on this window by default.

Now you have two ways to configure the **TCP/IP** protocol below:

➤ **Setting IP address automatically**

Select **Obtain an IP address automatically**, Choose **Obtain DNS server automatically**, as shown in the Figure below:

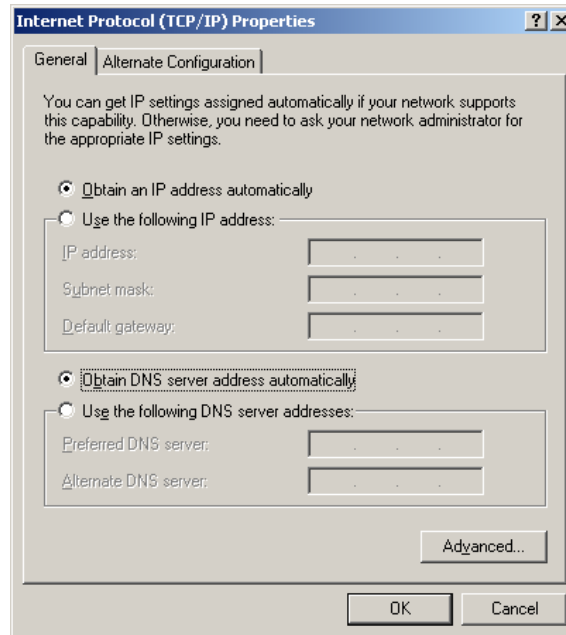


Figure B-3

➤ **Setting IP address manually**

- 1 Select **Use the following IP address** radio button. And the following items available
- 2 If the router's LAN IP address is 192.168.1.1, type IP address is 192.168.1.x (x is from 2 to 254), and **Subnet mask** is 255.255.255.0.
- 3 Type the router's LAN IP address (the default IP is 192.168.1.1) into the **Default gateway** field.
- 4 Select **Use the following DNS server addresses** radio button. In the **Preferred DNS Server** field you can type the DNS server IP address, which has been provided by your ISP.

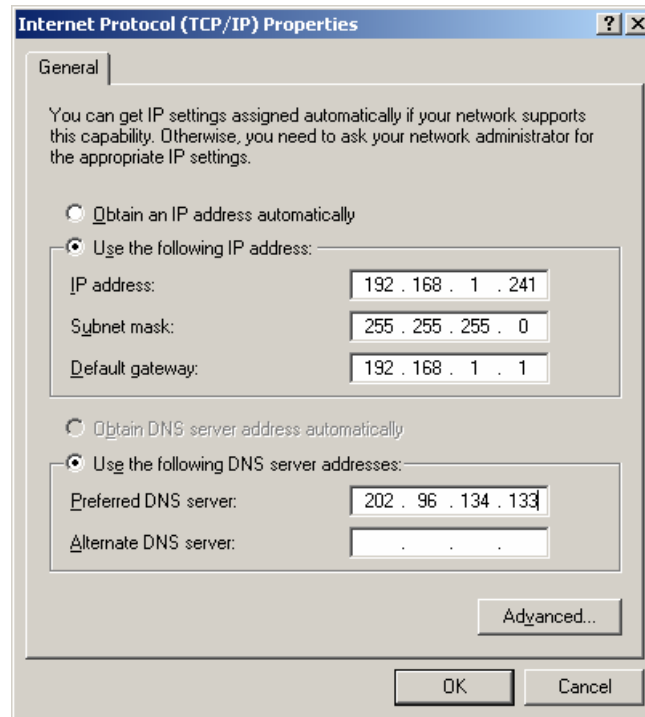


Figure B-4

Please note:

The configuration under Windows 98/Vista is a little different from that of Windows 2000/XP.

Users of Windows 98 can open **TCP/IP Properties** according to the following: Right-click (Mouse) **Network Neighbor** -> Choose **Properties** -> Double-click **TCP/IP PCI Fast Ethernet Adapter**.

Users of Windows Vista can do following: Right-press **Network**->Choose **Properties**, then you can see Figure B-5.

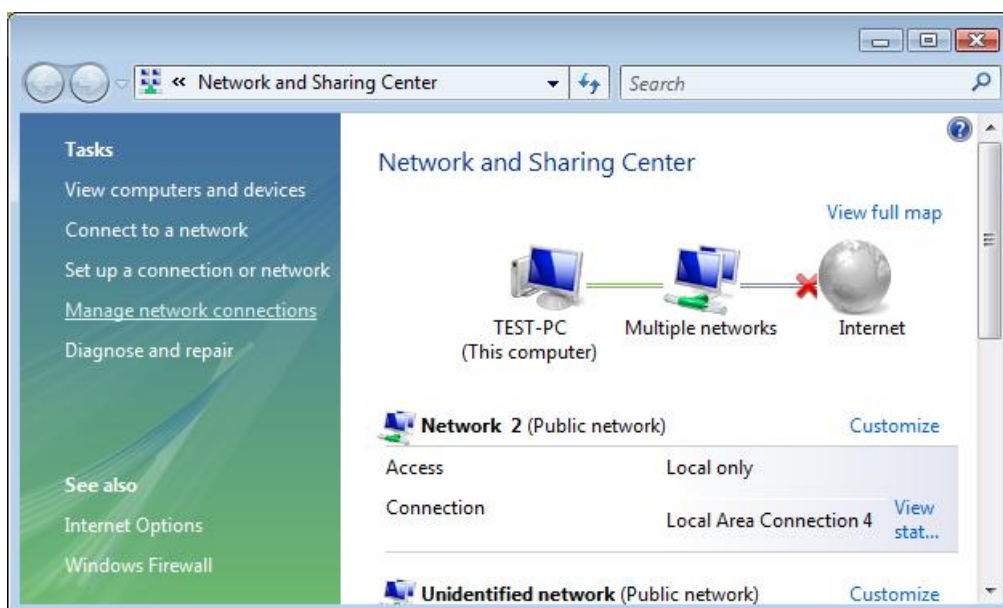


Figure B-5

Click **“Manage network connections”** in the right of this page. Then do as following: Right-press **Local Area Connection** ->Choose **Properties**->Double click **Internet Protocol Version 4 (TCP/IPv4)**.

Appendix C: Contact Information

For help with the installation or operation of the TP-LINK TD-8841 External ADSL2+ ROUTER, please contact us.

Website: <http://www.tp-link.com>