



Quick Installation Guide

RANGER SERIES

300Mbps Wireless 3G Green Broadband Router

DG-BR4313NG



UP TO 300 Mbps

FCC warning:

This equipment has been tested and found to comply with the limits for a class B digital device, pursuant to Part 15 of the FCC Rules. These limitations are designed to provide reasonable protection against harmful interference in a residential installation. This equipment generates, uses and can radiate radio frequency energy and, if not installed and used in accordance with the instructions, may cause harmful interference to radio communications. However, there is no guarantee that interference will not occur in a particular installation. If this equipment does cause harmful interference to radio or television reception, which can be determined by turning the equipment off and on, the user is encouraged to try to correct the interference by one or more of the following measures:

- Reorient or relocate the receiving antenna.
- Increase the separation between the equipment and receiver.
- Connect the equipment into a different outlet from that to which the receiver is connected.
- Consult your local distributors or an experienced radio/TV technician for help.
- Shielded interface cables must be used in order to comply with emission limits.

Changes or modifications to the equipment, which are not approved by the party responsible for compliance could affect the user's authority to operate the equipment.

Copyright:

Copyright © 2012 All rights reserved.

Company has an on-going policy of upgrading its products and it may be possible that information in this document is not up-to-date.

Please check with your local distributors for the latest information.

No part of this document can be copied or reproduced in any form without written consent from the company.

Trademarks:

DIGISOL™ is a trademark of Smartlink Network Systems Ltd. All other trademarks are the property of the respective manufacturers.

Package Contents

The following items should be present in your package:

- DG-BR4313NG Wireless Broadband Router
- Switching power adapter (5V DC, 2A)
- Quick Installation Guide
- Installation Guide CD (includes User Manual, QIG & Utility)
- Patch chord (1 No.)
- USB cable (1 No.)

Make sure that the package contains above items. If any of the listed items is damaged or missing, please contact your retailer immediately.

Product Overview

Thank you for purchasing DG-BR4313NG 300Mbps 802.11n Wireless Green 3G Broadband Router! DG-BR4313NG is an energy-efficient router which helps to save more power by using an embedded power amplifier. DG-BR4313NG is a power efficient router which saves host power by off-loading CPU when WLAN is idle. The Smart Tx Power Control mechanism in DG-BR4313NG transmits optimum power depending upon the distance of wireless clients from the router. DG-BR4313NG is the best choice for Small office / Home office users, all computers and network devices can share a single xDSL / cable modem internet connection at high speed. Easy install procedures allow computer users to setup a network environment in very short time - within minutes, even inexperienced users. When the number of your computers and network-enabled devices grow, you can also expand the number of network slots by simply connecting a hub or switch, to extend the scope of your network.

Product Features

- High Internet Access throughput.
- Wireless speed up to 300Mbps.
- Allows multiple users to share a single Internet line.
- Share a single Cable or xDSL internet connection.
- Share 3G USB Cellular modem.
- Access private LAN servers from the internet.
- Four wired LAN ports (10/100M) and one WAN port (10/100M).
- Works with IEEE 802.11b/g/n wireless LAN devices.
- Supports DHCP (Server/Client) for easy IP-address setup.
- Advanced network and security features like: Special Applications, QoS, DMZ, Virtual Servers, Access Control, Firewall.
- Allows you to monitor the router's status like: DHCP Client Log, System Log, Security Log and Device/Connection Status.
- Easy to use Web-based GUI for network configuration and management purposes.
- Remote management function allows configuration and upgrades from a remote computer (over the Internet).
- Provides Auto MDI / MDI-X function for all wired Ethernet ports.
- Supports Green WLAN for smart Tx power saving, Implicit Rx power saving and CPU offload.

System Requirements

The following system requirements are recommended

- Notebook or desktop computer with network adapter (wired/wireless)
- Internet connection, provided by xDSL or cable modem with a RJ-45 Ethernet port.
- Web browser (Microsoft Internet Explorer 6.0 or above, Netscape Navigator 4.7 or above, Opera/Safari/Firefox/Google Chrome web browser).
- An available AC power socket (100 – 240V, 50/60Hz)

Front View

Below shown is the product front view.

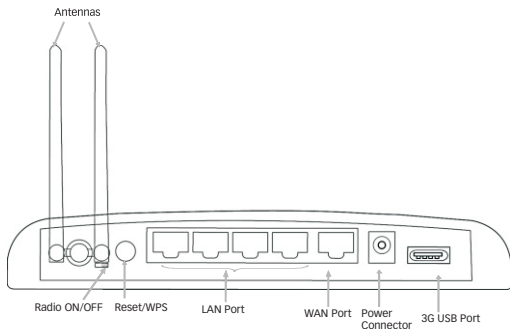


Users can verify router status from the LED indicators on the front panel. Below given is the LED description.

LED Name	LED Color	Light Status	Description
P (Power)	Green	On	Router is switched on and correctly powered.
		Off	Router is not powered.
WLAN	Amber	On	Wireless WPS function is enabled.
		Off	Wireless network is switched off.
		Flashing	Wireless LAN activity (transferring or receiving data).
WAN	Green	On	WAN port is connected.
		Off	WAN port is not connected.
		Flashing	WAN activity (transferring or receiving data).
LAN (1~4)	Green	On	LAN port is connected.
		Off	LAN port is not connected.
		Flashing	LAN activity (transferring or receiving data).

Rear View

Below shown is the product Rear View.



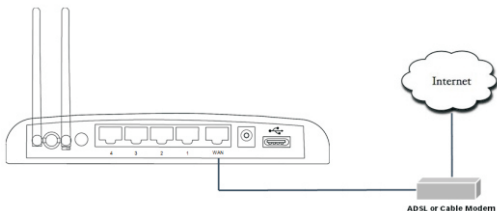
Below given is the router interface description.

Interfaces	Description
Antennas	These antennas are 3dBi dipole antennas.
Radio ON/OFF	Switch the button to activate or deactivate the wireless functions.
Reset / WPS	Reset the router to factory default settings (clear all settings) or start WPS function. Press this button and hold for 10 seconds to restore all settings to factory defaults, and press this button for less than 5 seconds to start WPS function.
LAN (1 – 4)	Local Area Network (LAN) ports 1 to 4.
WAN	Wide Area Network (WAN / Internet) port.
Power	Power connector, connects to A/C power adapter.
USB Port	Connect 3G USB data card.

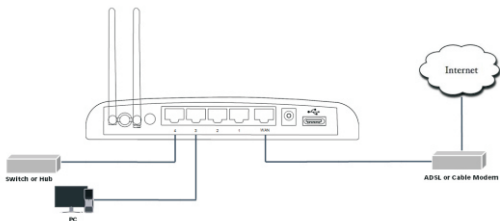
Hardware Installation

Please follow the below mentioned instructions to build the network connection between your new WIRELESS router and your computers, network devices:

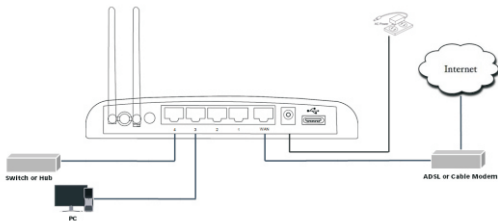
- 1 Connect your xDSL / cable modem to the WAN port of the router by an Ethernet cable.



- 2** Connect all your computers, network devices (switch / hub) to the LAN port of the router.



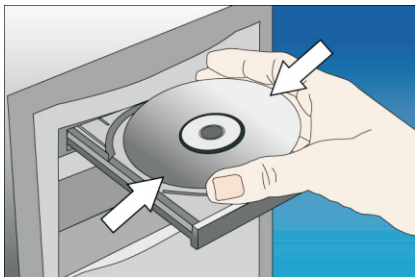
- 3** Connect the power adapter (5V DC / 2A) to the wall socket, and then connect it to the 'Power' socket of the router.



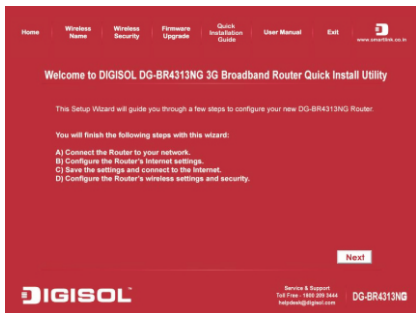
- 4** Please check all LEDs on the front panel. Power LED 'P' should be steadily ON, WAN and LAN LEDs should be ON. Check if the computer / network device connected to the respective port of the router is powered ON and correctly connected.

Software Installation

- 1 Insert the Setup CD into your CD-ROM drive of notebook/desktop computer.



- 2 Explore the CD and execute the "RWizard.exe" file. Below given screen will appear. Click '**Next**' to Continue.



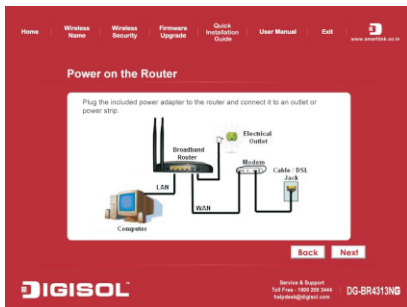
- 3 Connect one end of a network cable to the WAN port of the router and the other end to the DSL/Cable modem. Click **'Next'** to continue.



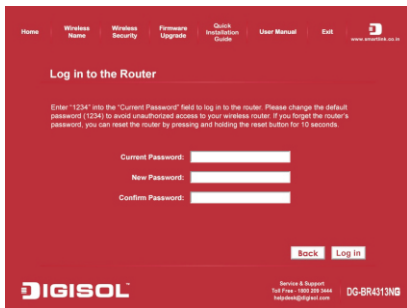
- 4 Connect one end of the provided network cable to one of the LAN ports (1~4) of the router and the other end to your computer. Click **'Next'** to continue with the installation.



- 5 Power on the Router. It will take approximately 55 seconds for the router to boot up completely. Ensure that all the LED's on the router are ON. If not, try the above steps again else click '**Next**' to continue.



- 6 Enter the Router's password to log in to the Router. The default password is "1234". It is recommended to change the router's password to protect it from being accessed by other users. If you do not wish to change the current password, you can leave "New Password" and "Confirm New Password" fields blank. Click '**Log in**' to continue.



- 7 Verify the Internet Connection Type the wizard has detected. If it is not correct, please configure it manually. Click **'Next'** to continue.



Note: If you are not sure which Internet Connection Type you use, please contact your Internet Service Provider for this information.

Note: All the software utility installation steps mentioned above are the common steps to be followed for all the modes.
Below mentioned are the configuration steps for each of the modes.

Enter the settings for your Internet Connection Type.

Configure the modes as shown in the following pages.

3G/3.5G

- 8 Select the Country and ISP from drop down list. Enter the APN, Username, Password and AT Dial Script, then click 'Next' to continue.

Home Wireless Name Wireless Security Firmware Upgrade Quick Installation Guide User Manual Exit  www.digisol.com.cn

Configure 3G Mode Settings

Please enter the User Name, Password, APN, PIN Code and Dialed Number provided to you by your service provider.

Country:

ISP:

PIN Code:

APN:

User Name:

Password:

Service: 3G/3.5G Only (UMTS/HSPA/HSPA)

AT Dial Script:

 Service & Support
Toll Free: 1800 209 3444
helpdesk@digisol.com DG-BR4313NG

Dynamic IP (cable modem users)

- 9 Click on 'Clone' to clone the MAC address of your PC with the WAN port of the router, then click 'Next' to continue.

Home Wireless Name Wireless Security Firmware Upgrade Quick Installation Guide User Manual Exit  www.digisol.com.cn

Configure Dynamic IP Settings

Most cable modem users use this connection type. To set up this connection, please make sure the computer connected to the Digisol Router was originally connected to the broadband modem. Please enter the Host Name if it is required by your Internet Service Provider. Click on "Clone" button to clone your computer's MAC address to the router.

Host Name:

MAC Address: 000000000000

 Service & Support
Toll Free: 1800 209 3444
helpdesk@digisol.com DG-BR4313NG

PPPoE (DSL Users)

- 10 Enter the user name and password provided by your ISP then click 'Next'.

The screenshot shows a web browser window with a dark blue header containing navigation links: Home, Wireless Name, Wireless Security, Firmware Upgrade, Quick Installation Guide, User Manual, and Exit. The main content area is titled "Configure PPPoE xDSL Settings" and includes the instruction: "Please enter the user name and password provided by your Internet Service Provider". Below this are three input fields: "User Name:" with a placeholder "(Example: username@sboglobal.net)", "Password:", and "Service Name (Optional):". At the bottom right of the form are "Back" and "Next" buttons. The footer features the Digisol logo, "Service & Support" contact information (Tel Free: 1800 200 3444, helpdesk@digisol.com), and the model number "DG-BR4313NG".

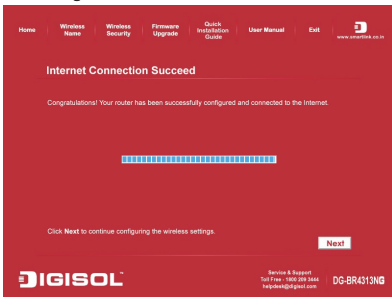
Static IP

- 11 Enter the IP Address, Subnet Mask, Default Gateway and DNS address by your ISP, then click 'Next'.

The screenshot shows a web browser window with a dark blue header containing navigation links: Home, Wireless Name, Wireless Security, Firmware Upgrade, Quick Installation Guide, User Manual, and Exit. The main content area is titled "Configure Static IP Settings" and includes the instruction: "Please enter the IP Address, Subnet Mask, Default Gateway and DNS Addresses assigned by your Internet Service Provider". Below this are four input fields: "IP Address:", "Subnet Mask:", "Default Gateway:", and "DNS Address:". At the bottom right of the form are "Back" and "Next" buttons. The footer features the Digisol logo, "Service & Support" contact information (Tel Free: 1800 200 3444, helpdesk@digisol.com), and the model number "DG-BR4313NG".

Note: Once the parameters for each mode as explained above are configured, following are the wireless configuration steps mentioned below.

- 12 Please wait while the Wizard tries to connect to the Internet. If you see the window "Internet Connection Succeed", your router has been successfully connected to the Internet. Please click 'Next' to configure the wireless settings.



- 13 Configure a name for your wireless network. Click 'Next' to continue.



- 14 Configure the security key for your wireless network. Check **'Enable WPA Pre-Shared Key'**. Enter 8 to 63 characters into WPA-Pre-Shared Key. Click **'Next'** to continue.

Home Wireless Name Wireless Security Firmware Upgrade Quick Installation Guide User Manual Exit  www.digisol.com

Configure Wireless Security

It is very important to set up wireless security to protect your network safety and privacy. Hackers and malicious users can easily access your valuable data if your wireless network lacks security protection. WPA Pre-shared Key is the most secured encryption for general users. Please enable the WPA Pre-Shared Key and enter a 8 to 63 characters (alphanumeric, case sensitive) key to the "WPA Pre-shared key" field below.


Enable WPA Pre-Shared Key

WPA Pre-Shared Key:

(Note: This is the security key for your wireless network.)

 Service & Support
Tel: 1-800-209-3444
helpdesk@digisol.com DG-BR4313NG

- 15 Verify the settings you just configured for the Router. Click **'Finish'** to restart the Router. This will take about 60 seconds.

Home Wireless Name Wireless Security Firmware Upgrade Quick Installation Guide User Manual Exit  www.digisol.com

Configuration Complete

This is the summary of your Digisol router's configuration:


Internet Connection Type: Static IP

Wireless Name (SSID): DIGISOL

Wireless Security: WPA2 (Mixed) Pre-Shared Key

Security Key: 12345678

Click Finish to save your current settings and reboot the router. After the router reboots, you can connect your wireless computers or other devices to the Digisol router with the wireless name and security key you have configured.

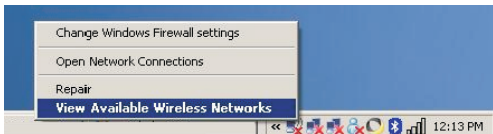
 Service & Support
Tel: 1-800-209-3444
helpdesk@digisol.com DG-BR4313NG

Congratulations! Your router configuration is now finished.

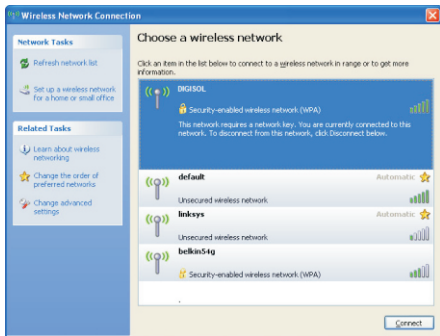
Connect to the router wirelessly

Users must configure their wireless notebook/desktop computer in order to establish a wireless connection to the router. The following instructions help in establishing a wireless connection between a Windows XP computer and the router.

- Right click the wireless icon in the system tray and click on “View Available Wireless Networks”.



- A window displaying available wireless networks will open. Select the wireless network you wish to connect and then click on 'Connect'.



- Enter the network security key if the wireless network you wish to connect has wireless encryption enabled. Click 'Connect'. The connection should now get established.

Wireless Network Connection

The network 'DIGISOL' requires a network key (also called a WEP key or WPA key). A network key helps prevent unknown intruders from connecting to this network.

Type the key, and then click Connect.

Network key:

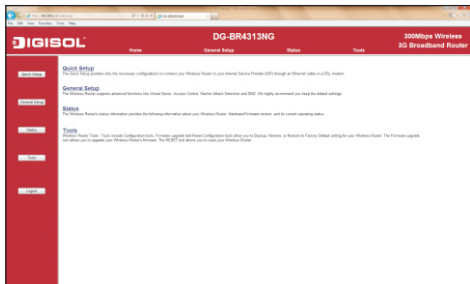
Confirm network key:

Web Management of the router

- To access the web configuration of the router, assign a static IP address to your notebook/desktop computer in the subnet 192.168.2.X with the subnet mask 255.255.255.0 and gateway as 192.168.2.1. For example, assign the IP address 192.168.2.10.
- Open a web browser and enter "http://192.168.2.1" in the address bar, press 'Enter'. A login screen will appear, assign username as "admin" and password as "1234". Press 'OK' to Log in.



- Following screen will appear on successful Login. You can now configure the router through this web management page.



FAQ

Following are the solutions to problems that may occur during the installation and operation of the DIGISOL DG-BR4313NG Wireless 3G Broadband Router.

1. Router cannot get connected to Internet.

- Access the router's web configuration and go to 'Status' -> 'Internet Connection' menu and verify Internet connection status.
- If you were previously able to connect a computer to Internet directly, try to do that again, and verify whether you can access Internet with your computer directly attached to the device provided by your Internet service provider.
- Check PPPoE user ID and password again.
- Call your Internet Service Provider and verify whether there is some issue with their service.
- Try to reboot the router and verify whether it connects to Internet or not.
- Try to use IP address instead of hostname. If you can use IP address to communicate with a remote server, but can't use hostname, please check DNS setting.

2. Wireless client cannot locate the router.

- Verify whether 'Broadcast ESSID' is set to off in router's web configuration.
- Verify whether the antenna is properly connected and in correct direction.
- Is your wireless client far away from your router? Try to get closer to the router.
- Ensure that you input ESSID on your wireless client manually, if ESSID broadcast is disabled.

This product comes with lifetime warranty.
For further details about warranty policy and product registration, please visit support section of www.digisol.com





A product of Smartlink Network Systems Ltd

DIGISOL House, Plot No. 5,
Kurla Bandra Complex Road
Santacruz (E), Mumbai - 400 098, India.

Tel +91 22 3061 6666 / 2652 6696,
Fax +91 22 2652 8914

www.digisol.com

DIGICARE™
Service And Support

 **1800 209 3444**
 helpdesk@digisol.com
sales@digisol.com