

# 2 Simple Steps to install PROLiNK Hurricane 9000P

## Step 1 Hardware Connection

- A. Connect one end of the RJ45 cable to the Ethernet port of your computer.
- B. Connect the other end of RJ45 cable to the ADSL Modem.
- C. Connect One end of telephone cable to the “LINE” jack of the ADSL Modem.
- D. Plug the other end of the telephone cable to the “DSL” jack of splitter.
- E. If you have a telephone, you can connect it to the “PHONE” jack of splitter. (Optional)
- F. Connect the splitter to the telephone wall jacket.
- G. Connect power adaptor to the power socket.

Diagram A



## Step 2 Software Installation

- A. Turn on the switch to power on the modem
- B. Power on your PC to start Windows.
- C. Place the Hurricane 9000 Series installation CD into your CDROM drive.

The CD should auto-run within seconds.  
If not, awake the setup manually:-  
Start >> Run>> D:\Quicksetup.exe



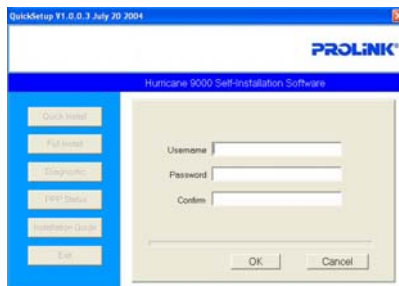
- D. Click Continue Button



- E. Click Quick Install Button



- F. Key in your **UserID@ispname** and Password, then click Submit Button.



- G. Click Continue Button to 10.0.0.2, or press Cancel to exit.



- H. User Name: **admin**  
Password: **password**  
to log on to 10.0.0.2

